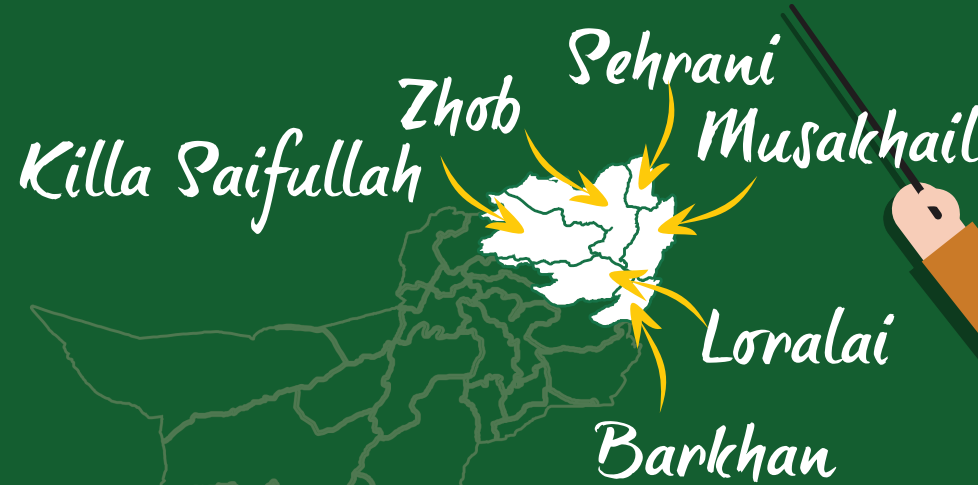


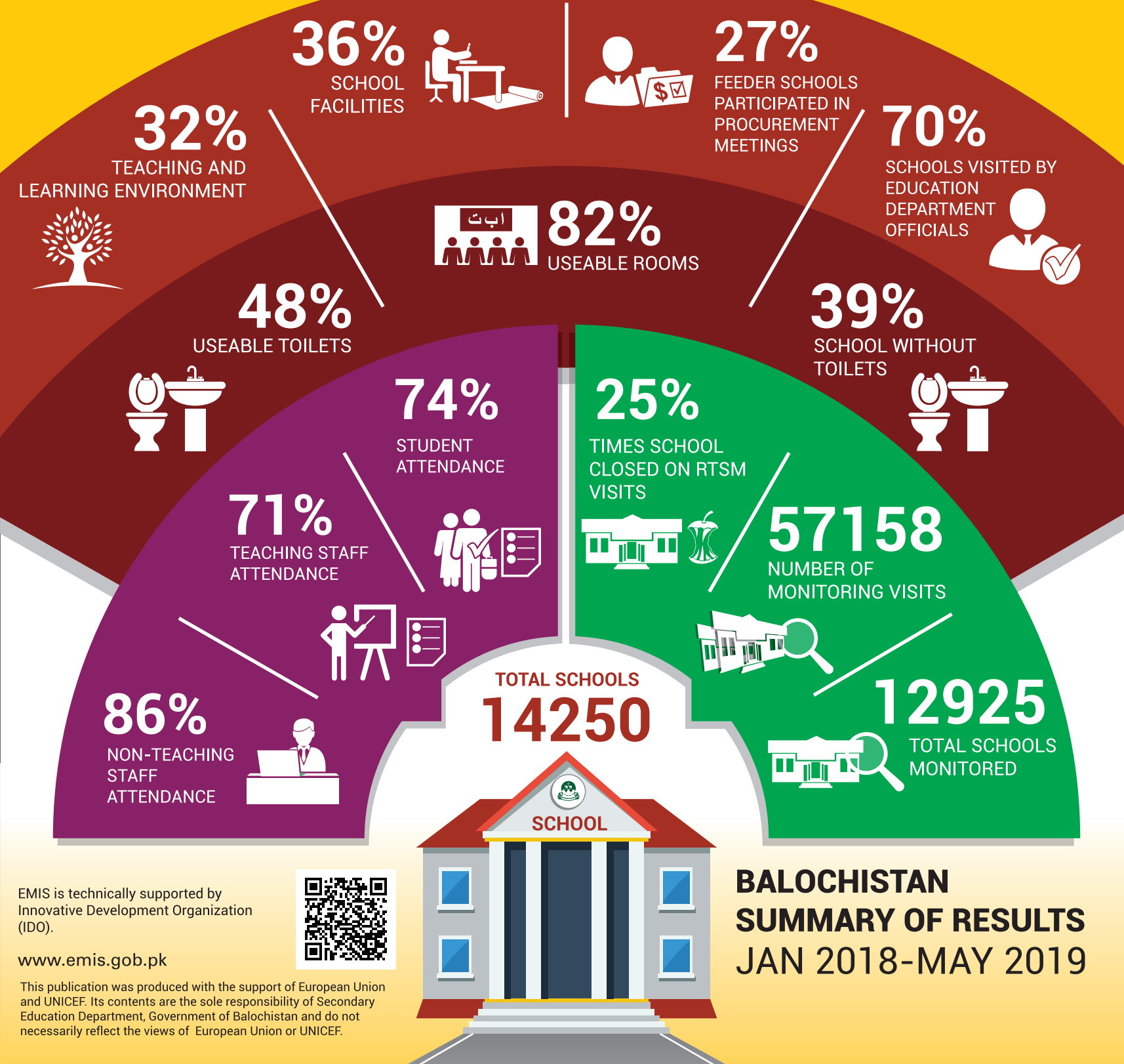
# ZHOB DIVISION



**PERFORMANCE MANAGEMENT CELL (PMC)**  
Policy, Planning and Implementation Unit (PIU)  
Secondary Education Department, Balochistan

## BALUCHISTAN REAL TIME SCHOOL MONITORING SYSTEM DIVISIONAL REPORT CARD

Based on findings of 57,158 monitoring visits to 12,925 schools from Jan 2018 to May 2019 in Balochistan

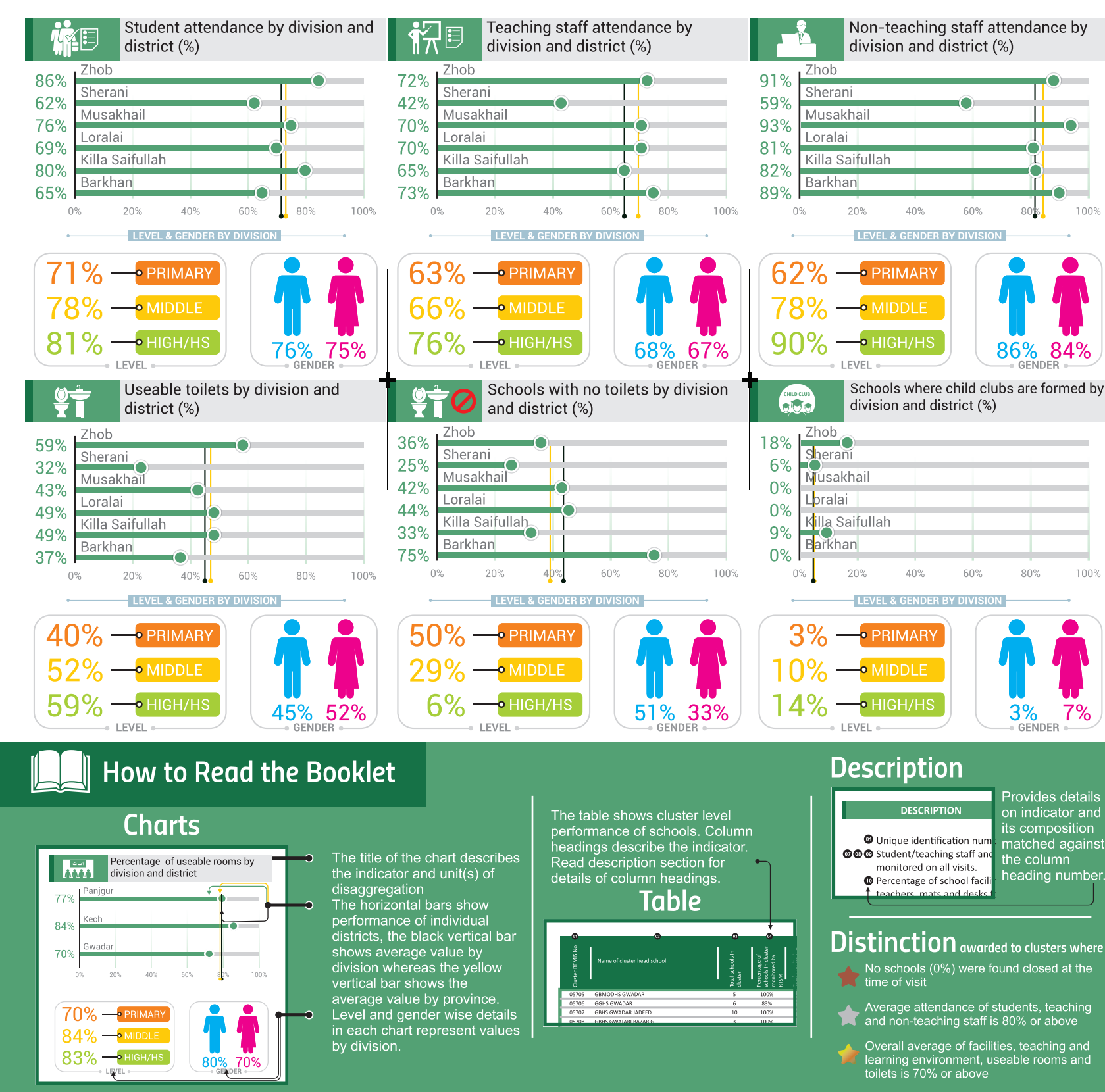
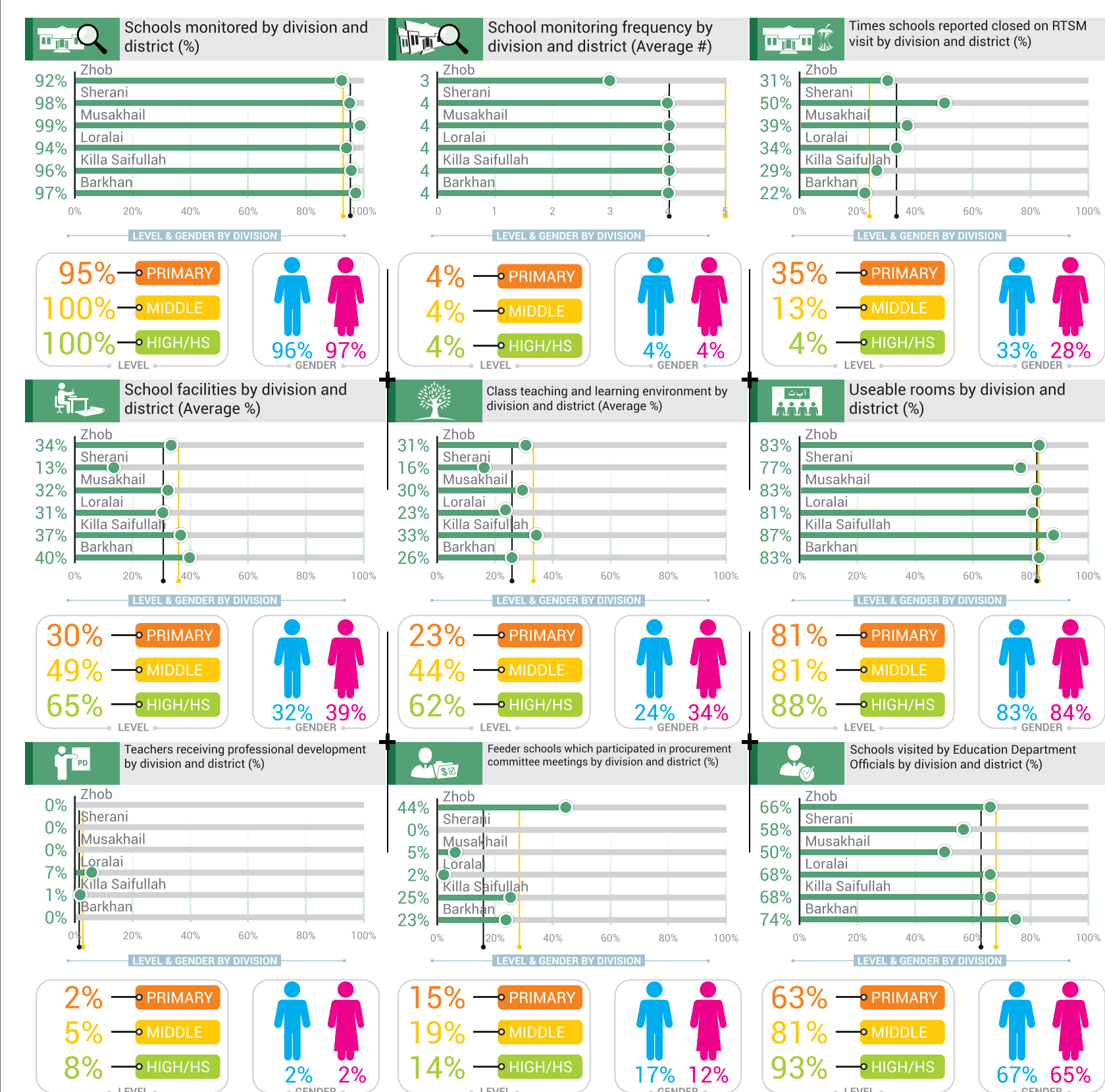


### BALUCHISTAN SUMMARY OF RESULTS JAN 2018-MAY 2019

EMIS is technically supported by Innovative Development Organization (IDO).

www.emis.gob.pk

This publication was produced with the support of European Union and UNICEF. Its contents are the sole responsibility of Secondary Education Department, Government of Balochistan and do not necessarily reflect the views of European Union or UNICEF.



### How to Read the Booklet

**Charts**

The title of the chart describes the indicator and unit(s) of disaggregation. The horizontal bars show performance of individual districts, the black vertical bar shows average value by division whereas the yellow vertical bar shows the average value by province. Level and gender wise details in each chart represent values by division.

**Table**

The table shows cluster level performance of schools. Column headings describe the indicator. Read description section for details of column headings.

**Description**

Provides details on indicator and its composition matched against the column heading number.

- Unique identification number monitored on all visits.
- Percentage of school facilities.

**Distinction awarded to clusters where**

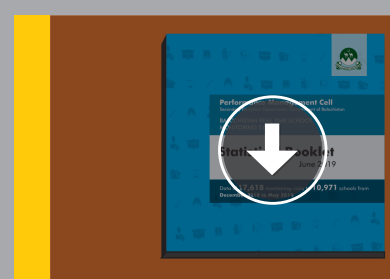
- No schools (0%) were found closed at the time of visit.
- Average attendance of students, teaching and non-teaching staff is 80% or above.
- Overall average of facilities, teaching and learning environment, useable rooms and toilets is 70% or above.

Cluster Schools and Monitoring Visits		Cluster Operations		Cluster Attendance		Cluster Environment			Cluster Participation								
Cluster BEIMS No	Cluster Name	Total Schools	Schools in Cluster Monitored (%)	Monitoring Visits (#)	Times Schools Closed on visit (%)	Student (%)	Teaching Staff (%)	Non Teaching Staff (%)	Facilities (%)	Teaching and Learning (%)	Useable Rooms (%)	Useable Toilets (%)	Schools without Toilets (%)	Child Clubs Formed (%)	Teachers enrolled in CPD* (%)	Feeder Schools in Procurement Meetings (%)	Schools visited by EFOs* (%)
04493	GBHS MADRASSA KHUKNKAI	22	91%	103	61%	59%	26%	39%	9%	10%	71%	37%	30%	0%	0%	0%	10%
04494	GBHS KHANKI	34	100%	109	61%	59%	41%	64%	10%	11%	88%	32%	24%	1%	0%	1%	16%
04552	GBHS MANI KHAWA	34	97%	215	46%	59%	51%	94%	12%	18%	79%	23%	30%	4%	0%	1%	11%
04558	GBHS KHAN ALAM	31	100%	147	42%	71%	58%	42%	15%	24%	80%	16%	26%	20%	0%	0%	15%
08197	GBHS BIASH LAWARAH ROZI KHAN	26	100%	59	51%	65%	50%	52%	13%	10%	71%	44%	27%	2%	0%	0%	20%
08198	GBHS CHACHOBI MALIK ANWAR	31	100%	103	57%	70%	23%	76%	12%	15%	70%	45%	23%	3%	0%	0%	17%
14854	GGHS SHARAN ABDUL SATTAR NO. 2	21	95%	86	41%	53%	42%	48%	23%	26%	73%	50%	15%	12%	0%	1%	14%
03838	GBHS KHAJOORI BAZAR	10	100%	26	58%	76%	63%	100%	25%	17%	56%	19%	60%	0%	0%	8%	8%
03843	GBHS NATH	18	94%	76	61%	78%	57%	93%	17%	14%	80%	40%	41%	0%	0%	1%	8%
03864	GBHS GARCHOHI	14	100%	61	49%	71%	43%	68%	22%	18%	70%	10%	57%	0%	0%	0%	10%
03875	GBHS TOI SAR CHEENA KHUNDI	27	100%	104	57%	71%	42%	91%	20%	16%	70%	18%	56%	0%	0%	1%	6%
03889	GBHS BUN	9	100%	35	6%	81%	90%	100%	48%	49%	93%	67%	33%	0%	0%	26%	26%
03890	GBHS KAR KANA	9	100%	33	3%	77%	91%	90%	48%	51%	91%	26%	56%	0%	0%	21%	24%
03891	GBHS GARH GOOJI	13	100%	52	17%	65%	81%	91%	35%	35%	79%	83%	54%	0%	0%	15%	12%
03897	GBHS DURAG	22	100%	77	12%	83%	85%	96%	42%	33%	80%	82%	59%	0%	0%	5%	17%
03905	GBHS DAKYAN	19	100%	88	34%	77%	60%	93%	32%	25%	87%	39%	32%	0%	0%	0%	11%
03910	GBMODHS MUSA KHAIL	24	100%	135	47%	83%	75%	96%	27%	24%	88%	65%	33%	0%	0%	4%	10%
03917	GGHS MUSA KHAIL	25	96%	62	52%	82%	66%	100%	27%	34%	99%	61%	8%	0%	0%	0%	15%
03922	GGHS DRUG	20	100%	42	14%	71%	73%	55%	49%	53%	85%	30%	40%	0%	0%	0%	29%
03924	GGHS GARGOOJI DURG	11	100%	23	35%	54%	46%	93%	34%	37%	82%	12%	27%	0%	0%	17%	26%
03932	GBHS BASTI KHAN MUHAMMAD	7	100%	29	28%	71%	78%	100%	37%	39%	65%	29%	71%	0%	0%	7%	24%
03936	GBHS KINGRI	11	100%	39	51%	80%	74%	100%	25%	21%	87%	39%	36%	0%	0%	5%	15%
03978	GGHS RARHASHUM YAMIN SHAH	23	100%	71	37%	74%	70%	98%	39%	39%	83%	56%	30%	0%	0%	0%	15%
03980	GBHSS RARHA SHUM	9	89%	33	12%	76%	86%	100%	48%	43%	84%	3%	38%	0%	0%	21%	21%
03984	GBHS BURG PUSHT	17	100%	59	32%	77%	68%	100%	32%	29%	80%	5%	76%	0%	0%	12%	7%
05985	GBHS MEHMOOD ABAD	27	100%	141	51%	79%	64%	100%	26%	19%	88%	24%	33%	0%	0%	4%	11%

Note: The findings of RTSM visits represent the performance of schools as noticed at the time of visit and may not be representative of routine school functions.

- Unique identification number of cluster head schools in ascending order
- Shows the percentage of times out of total monitoring visits on which schools were found closed.
- Student/teaching staff and non teaching staff attendance value is a sum of the total number of students/staff monitored on all visits.
- Percentage of school facilities is a composite average of availability of safe drinking water, chairs and table for teachers, mats and desks for students and blackboard and chalks in classes.

- Percentage of teaching and learning environment in school is a composite average of students having textbook, availability of syllabus in class and number of students wearing uniform.
- Shows usability of available rooms to carry out teaching and learning processes and usability of available toilets to fulfill sanitation and safe hygiene needs of students. The monitoring tools employed here are based on observation of the monitor and interview with school/class teacher(s)
- Refers to the number of teachers in cluster and feeder schools who are participating in Continuous Professional Development (CPD)\* training.
- Refers to the participation of staff of feeder schools in procurement committee meetings convened by cluster head schools based on information provided by feeder schools.
- Refers to the percentage of schools in cluster visited by Education Field Officials (EFO)\* during the reporting period.



Download the Electronic copy of **STATIC BOOKLET** JUNE 2019

click the Download button



Watch a video documentary on the Balochistan Real Time School Monitoring System

click the play button

## CLUSTER REPORT CARD

Cluster Schools and Monitoring Visits			Cluster Operations			Cluster Attendance			Cluster Environment				Cluster Participation					
01	02	03	04	05	06	07	08	09	10	11	12	13	14	15	16	17	18	
Cluster BEWIS No	Cluster Name	Stars	Total Schools	Schools in Cluster Monitored (%)	Monitoring Visits (#)	Times Schools Closed on visit (on)	Student (%)	Teaching Staff (%)	Non Teaching Staff (%)	Facilities (%)	Teaching and Learning (%)	Useable Rooms (%)	Usable Toilets (%)	Schools without Toilets (%)	Child Clubs Formed(%)	Teachers enrolled in CPP+ (%)	Feeder Schools in Procurement Meetings (%)	Schools visited by EFOs+ (%)
04551	GBHS ALI KHAN ZAI	★	19	89%	52	29%	88%	75%	100%	38%	39%	89%	53%	29%	13%	0%	52%	25%
04553	GBHS MEENA BAZAR ZHOB	★	18	100%	55	22%	79%	68%	100%	35%	32%	70%	38%	61%	9%	0%	51%	27%
04554	GBHS BRUNJ		8	100%	24	13%	76%	76%	69%	40%	37%	76%	20%	63%	0%	0%	63%	29%
04562	GBHS WALA AKRAM	★	23	96%	48	35%	79%	74%	100%	28%	24%	80%	41%	23%	8%	0%	52%	23%
04563	GBHSS ZHOB	★	8	100%	32	13%	94%	87%	91%	66%	68%	99%	85%	0%	22%	0%	75%	22%
04564	GBHS KILLI SHEIKHAN	★	10	100%	27	22%	89%	83%	100%	36%	36%	88%	17%	50%	30%	4%	44%	26%
04565	GBHS MURGHA KIBZAI		21	100%	44	45%	72%	53%	96%	17%	13%	79%	27%	38%	0%	0%	14%	32%
04567	GBHS QAMAR DIN KARAIZ		34	74%	49	51%	83%	31%	85%	17%	11%	57%	0%	52%	4%	2%	18%	16%
04586	GGHS ZHOB CITY	★	13	77%	44	7%	85%	77%	94%	64%	69%	87%	68%	0%	34%	0%	39%	20%
04588	GGHS KILLI GOBANI APPOZAI	★	3	100%	13	0%	89%	87%	100%	73%	81%	95%	74%	0%	77%	0%	62%	23%
04600	GGHS SAQI APPOZAI	★	10	90%	25	40%	77%	68%	96%	34%	36%	86%	84%	22%	20%	0%	28%	16%
04601	GBHS BOBY ARABZAI		18	94%	40	45%	69%	42%	69%	27%	19%	67%	38%	29%	3%	0%	48%	25%
04602	GBHS GURHDA BABARH		28	93%	58	50%	67%	44%	52%	16%	15%	76%	52%	38%	5%	0%	31%	26%
04603	GBHS GUSTAI		13	85%	21	29%	52%	41%	100%	29%	19%	66%	90%	55%	0%	0%	57%	19%
04604	GBHS ZHOB MALAISIA LINE	★	6	100%	28	0%	93%	91%	100%	70%	71%	92%	84%	33%	32%	0%	75%	21%
04605	GBHS WADH SHEIKHAN	★	8	100%	39	8%	90%	81%	91%	64%	58%	94%	78%	25%	41%	0%	62%	21%
04607	GBHS NEW TOWN	★	5	60%	11	9%	83%	91%	100%	55%	58%	89%	89%	0%	64%	0%	45%	18%
04608	GBHS KILLI APPOZAI	★	9	89%	36	22%	91%	86%	93%	45%	35%	92%	47%	25%	25%	0%	50%	17%
04612	GBHS OMZHA		13	92%	39	44%	75%	43%	81%	29%	27%	54%	0%	50%	3%	0%	28%	21%
04635	GBHS ASGHAR TANGAI		13	92%	31	55%	71%	57%	50%	26%	16%	46%	33%	67%	6%	0%	32%	23%
04649	GBHS MUNDAY ZAI	★	8	100%	31	26%	82%	79%	100%	37%	39%	89%	55%	13%	23%	0%	45%	19%
04652	GBHS TAQI ZHOB	★	11	100%	38	39%	85%	65%	100%	29%	28%	80%	29%	82%	3%	0%	45%	29%
04661	GBHS VIALA MIR BAZ		6	100%	19	32%	86%	75%	75%	36%	32%	75%	14%	50%	5%	5%	53%	21%
04700	GBHS TORA KHULA	★	12	100%	31	19%	79%	75%	100%	44%	43%	83%	40%	50%	23%	0%	52%	26%
09250	GGHS ZHOB MALASIA LINE	★	12	92%	35	37%	87%	81%	92%	45%	48%	94%	60%	9%	43%	0%	49%	26%
09489	GGHSS NASAR ABAD ZHOB	★	10	100%	27	26%	92%	79%	87%	43%	43%	92%	61%	10%	37%	0%	30%	26%
10552	GGHS NEW GANJ MUHALLAH SH:	★	14	100%	36	56%	86%	56%	100%	18%	18%	93%	65%	21%	33%	3%	36%	14%
11207	GGHS VIALA AKRAM (KILLI TARAKI)	★	12	83%	34	24%	82%	67%	100%	47%	45%	95%	55%	30%	32%	0%	56%	21%
01858	GBHS AKHTAR ZAI		27	100%	97	36%	78%	48%	59%	37%	30%	81%	28%	22%	10%	0%	30%	13%
01867	GBHS BANDAT MUSAZAI	★	22	100%	89	26%	83%	73%	90%	44%	32%	87%	33%	32%	8%	0%	9%	19%
01875	GBHS KILLI JALAL KHAN		32	100%	121	27%	86%	56%	92%	38%	34%	93%	72%	31%	10%	1%	40%	18%
01882	GBHS QILLAH SAIFULLAH		32	97%	116	36%	83%	62%	84%	29%	24%	77%	40%	45%	2%	1%	12%	16%
01900	GBHSS KHULGAI		22	95%	76	38%	73%	56%	83%	29%	26%	76%	57%	52%	3%	0%	34%	17%
01915	GBHS GAWAL ISMAIL ZAI		31	94%	98	48%	75%	44%	58%	25%	17%	92%	55%	45%	5%	0%	20%	16%
01922	GBHS AMIR ABAD		31	94%	107	31%	74%	59%	84%	39%	27%	82%	25%	34%	5%	1%	30%	22%
01934	GBHS SHARAN JOGIZAI		19	95%	59	49%	68%	38%	53%	25%	18%	81%	58%	22%	0%	0%	20%	15%
01982	GBHS MURGHA FAQIR ZAI		39	95%	122	53%	82%	53%	77%	20%	16%	93%	44%	22%	1%	0%	14%	13%
01983	GBHS KOZ KACH		26	100%	81	37%	82%	51%	56%	28%	20%	78%	48%	35%	0%	0%	26%	21%
02006	GBHS MUSLIM BAGH	★	30	93%	104	9%	84%	80%	98%	58%	50%	93%	63%	32%	14%	2%	24%	25%
02010	GBHS URGUS	★	19	95%	60	10%	79%	63%	100%	45%	43%	98%	67%	56%	5%	2%	27%	28%
02024	GBHS NASAI		36	100%	118	33%	85%	51%	89%	35%	22%	96%	59%	28%	3%	1%	42%	20%
02038	GBHS RAGHA SULTANZAI		20	95%	73	23%	75%	77%	75%	38%	32%	74%	9%	53%	0%	0%	22%	25%
02053	GBHS SAM KHAIL	★	15	100%	57	21%	82%	74%	100%	48%	39%	97%	58%	40%	14%	2%	26%	26%
02070	GBHS RAGHA BAKALZAI	★	12	100%	47	13%	73%	82%	100%	45%	39%	77%	14%	50%	2%	0%	36%	23%
02072	GBHS PESHAK BAKALZAI		6	100%	24	33%	68%	60%	67%	33%	32%	69%	0%	50%	0%	0%	42%	25%
02078	GBHS MURGHA BAKALZAI		5	100%	20	10%	73%	71%	50%	41%	45%	67%	100%	80%	0%	5%	50%	25%
02095	GBHS IKHTIAR KARAIZ	★	7	100%	27	19%	85%	69%	100%	41%	38%	93%	43%	71%	7%	4%	11%	26%
02111	GBHS KAN MEHTER ZAI	★	9	89%	42	12%	73%	80%	100%	52%	42%	88%	55%	38%	26%	2%	43%	17%
02114	GBHS MURGHA MEHTERZAI	★	12	92%	41	20%	81%	78%	100%	43%	42%	87%	59%	55%	17%	0%	49%	24%
02122	GGHS NASAI		7	100%	29	31%	87%	51%	78%	28%	27%	96%	58%	43%	3%	0%	28%	10%
02124	GGHS KAN MEHTERZAI	★	26	100%	98	18%	77%	73%	100%	46%	49%	88%	47%	46%	21%	0%	34%	13%
02128	GGHS QILLAH SAIFULLAH	★	23	100%	77	27%	82%	62%	100%	35%	39%	80%	48%	13%	30%	10%	5%	18%
02138	GGHS MUSLIM BAGH	★	20	90%	69	14%	87%	67%	73%	60%	73%	87%	71%	0%	38%	1%	17%	22%
02139	GGHS URGUS		28	96%	96	26%	73%	64%	93%	39%	43%	93%	45%	30%	4%	0%	21%	10%
02140	GGHS TALRI MUHAMMAD JAN		11	100%	38	37%	64%	52%	67%	32%	32%	100%	22%	27%	0%	3%	13%	5%
02142	GGHS BANDAT MUSAZAI		24	88%	81	15%	74%	57%	74%	51%	43%	80%	45%	5%	14%	5%	11%	22%
02144	GBHS MUHAMMAD RAFAY	★	10	70%	32	6%	82%	87%	94%	52%	42%	92%	42%	29%	9%	3%	38%	22%
10507	GGHS KOOZ KACH		6	100%	19	68%	91%	19%	17%	15%	15%	89%	43%	17%	11%	0%	0%	5%
12739	GBHS SHINA KHORA	★	15	93%	56	34%	85%	66%	100%	35%	29%	97%	68%	14%	0%	2%	36%	16%
04022	GGHSS DUKI KILLI		56	98%	204	37%	57%	65%	95%	34%	24%	79%	43%	38%	0%	3%	5%	20%
04024	GGHS KILLI DIN MUHAMMAD NASAR		37	97%	117	56%	65%	45%	67%	24%	18%	77%	66%	33%	0%	2%	3%	15%
04066	GBHS NANA SAHIB ZAIRAT		31	94%	72	42%	61%	57%	42%	23%	13%	82%	26%	34%	0%	4%	0%	18%
04086	GBHS HAJI KARAIZ DUKI		24	100%	55	47%	65%	58%	95%	17%	12%	61%	0%	46%	0%	4%	4%	15%
04088	GBHS HOSARI	★	1	100%	3	0%	86%	84%	100%	38%	36%	88%	25%	N/A	0%	33%	N/A	100%
04089	GBHS BUGAT		27	96%	76	33%	64%	73%	96%	29%	18%	71%	50%	73%	0%	8%	0%	20%
04093	GBHS MANZAI		41	98%	80	73%	72%	47%	93%	11%	7%	73%	38%	23%	0%	1%	0%	9%
04099	GBHS KILLI DUKI		44	84%	151	27%	59%	64%	100%	37%	21%	83%	52%	62%	0%	7%	0%	19%
04100	GBHS DUKI		73	85%	260	40%	59%	67%	65%	31%	17%	76%	57%	52%	0%	4%	0%	17%
04172	GBHS NASARABAD WARD NO-5 ORYAGI	★	20	100%	169	24%	73%	81%	92%	41%	30%	94%	48%	50%	0%	11%	1%	10%
04174	GBMODHS LORALAI	★	25	100%	171	23%	79%	84%	92%	40%	29%	83%	32%	52%	0%	11%	1%	13%
04175	GBHS BALOCH COLONY LORALAI		24	100%	152	27%	78%	78%	78%	36%	26%	92%	42%	38%	0%	14%	1%	12%
04176	GBHS LORALAI TOWN		28	89%	183	38%	77%	73%	71%	34%	20%	81%	55%	32%	1%	11%	2%	10%
04180	GBHS MUHALLAH KUDEZAI		16	100%	118	14%	75%	78%	78%	43%	28%	83%	44%	44%	0%	19%	1%	13%
04187	GGMODHS LORALAI		24	96%	95	19%	73%	77%	84%	45%	42%	86%	61%	9%	0%	7%	8%	19%
04188	GGHS CANTT LORALAI		28	96%	99	34%	66%	71%	86%	37%	31%	83%	55%	26%	0%	2%	6%	19%
04189	GGHS POLICE LINE LORALAI		16	100%	62	19%	75%	78%	75%	48%	52%	89%	65%	19%	0%	10%	15%	21%
04216	GBHS KILLI MAHIWAL		15	93%	61	23%	72%	61%	79%	32%	27%	85%	65%	50%	0%	2%	0%	21%
04240	GBHS MEKHTAR		28	89%	109	29%	65%	67%	78%	30%	22%	86%	42%	48%	0%	0%	0%	18%
04246	GBHS DARGAI SHABOZAI		47	100%	256	39%	74%	71%	78%	28%	20%	80%	34%	64%	0%	6%	1%	13%
04255	GBHS MARH TANGI		18	100%	66	48%	72%	64%	100%	22%	16%	94%	53%	50%	0%	2%	0%	15%
04269	GGHS KILLI DILLI MALIK DAD MULLAZAI		15	100%	64	28%	57%	59%	89%	48%	34%	85%	74%	0%	0%	0%	0%	22%
04296	GBHS SHAH KARAIZ		25	96%	141	33%	70%	77%	77%	31%	22%	74%	33%	63%	0%	6%	0%	13%
04332	GBHS DARGAI SARGARH		21	86%	88	44%	81%	54%	90%									