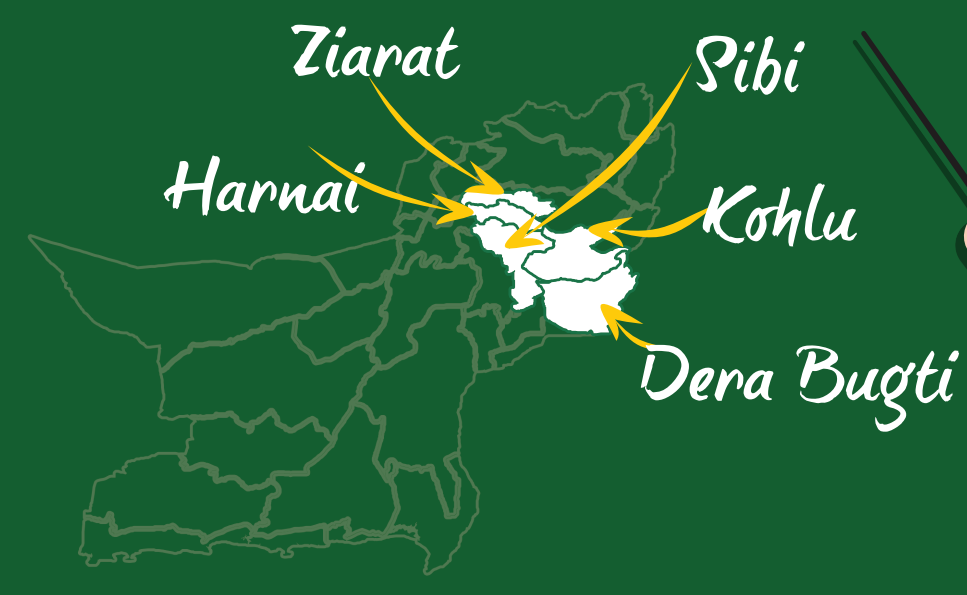


# SIBI DIVISION

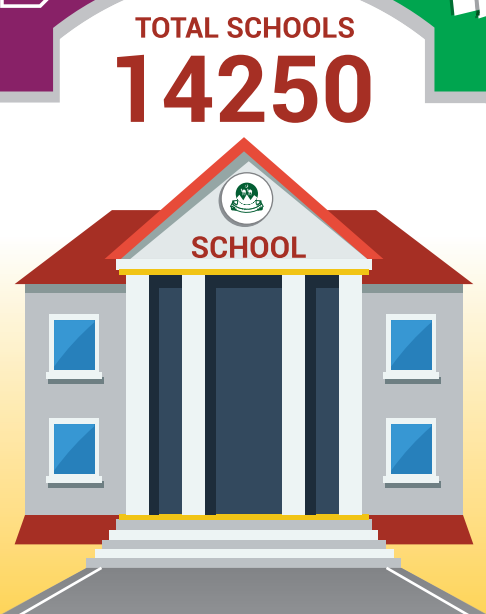
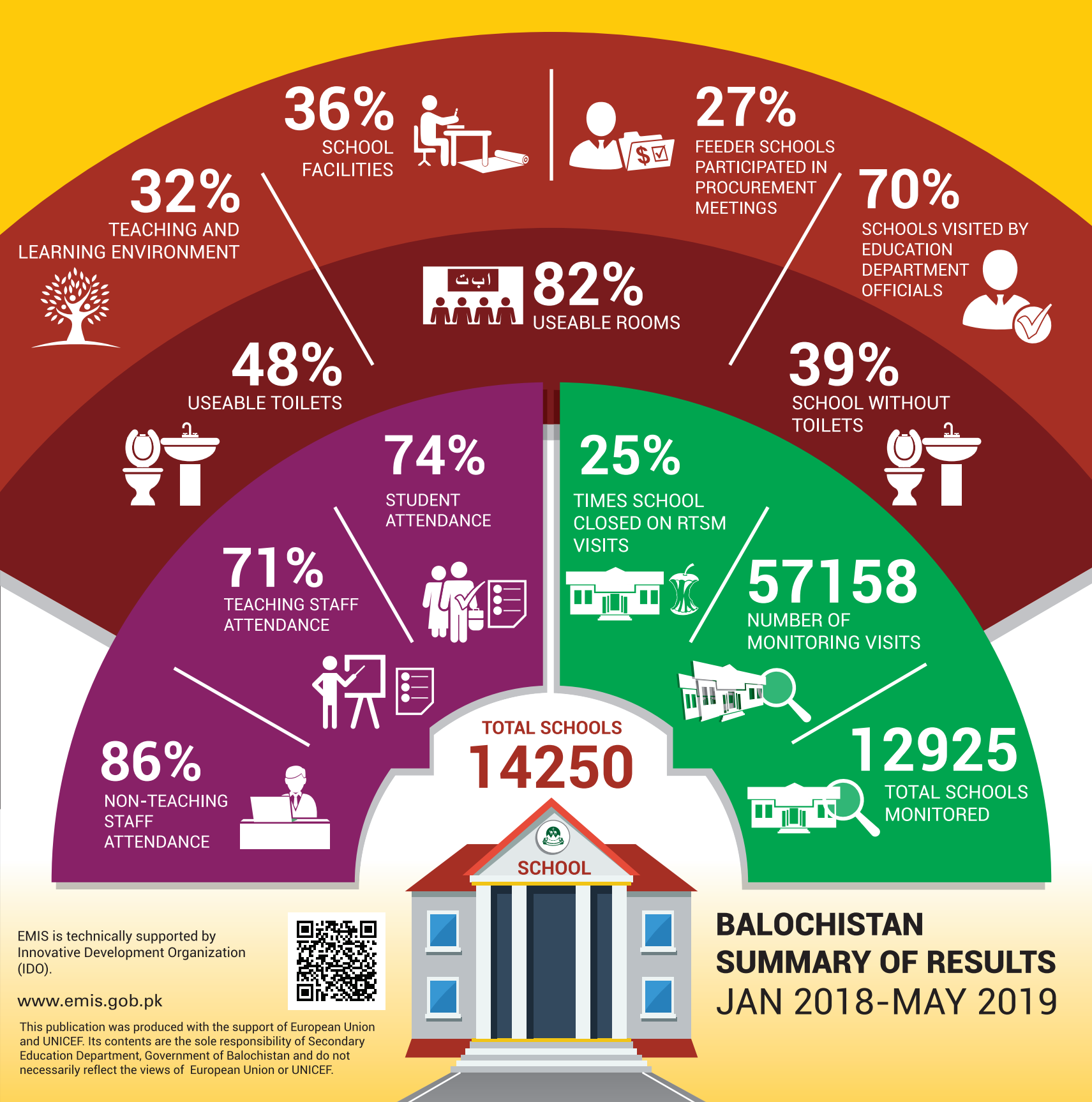


**PERFORMANCE MANAGEMENT CELL (PMC)**  
Policy, Planning and Implementation Unit (PIU)  
Secondary Education Department, Balochistan

**BALUCHISTAN REAL TIME SCHOOL MONITORING SYSTEM**

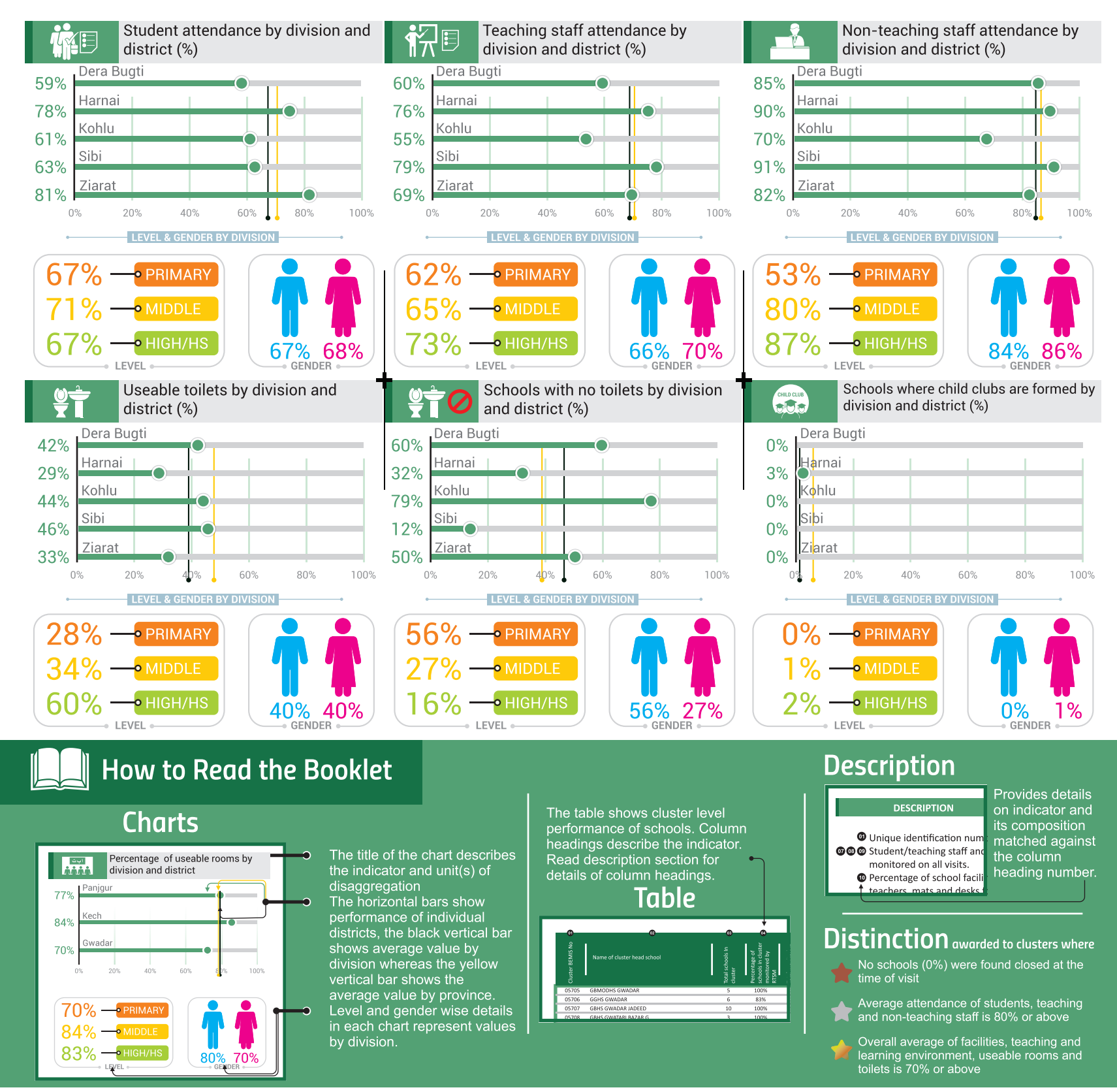
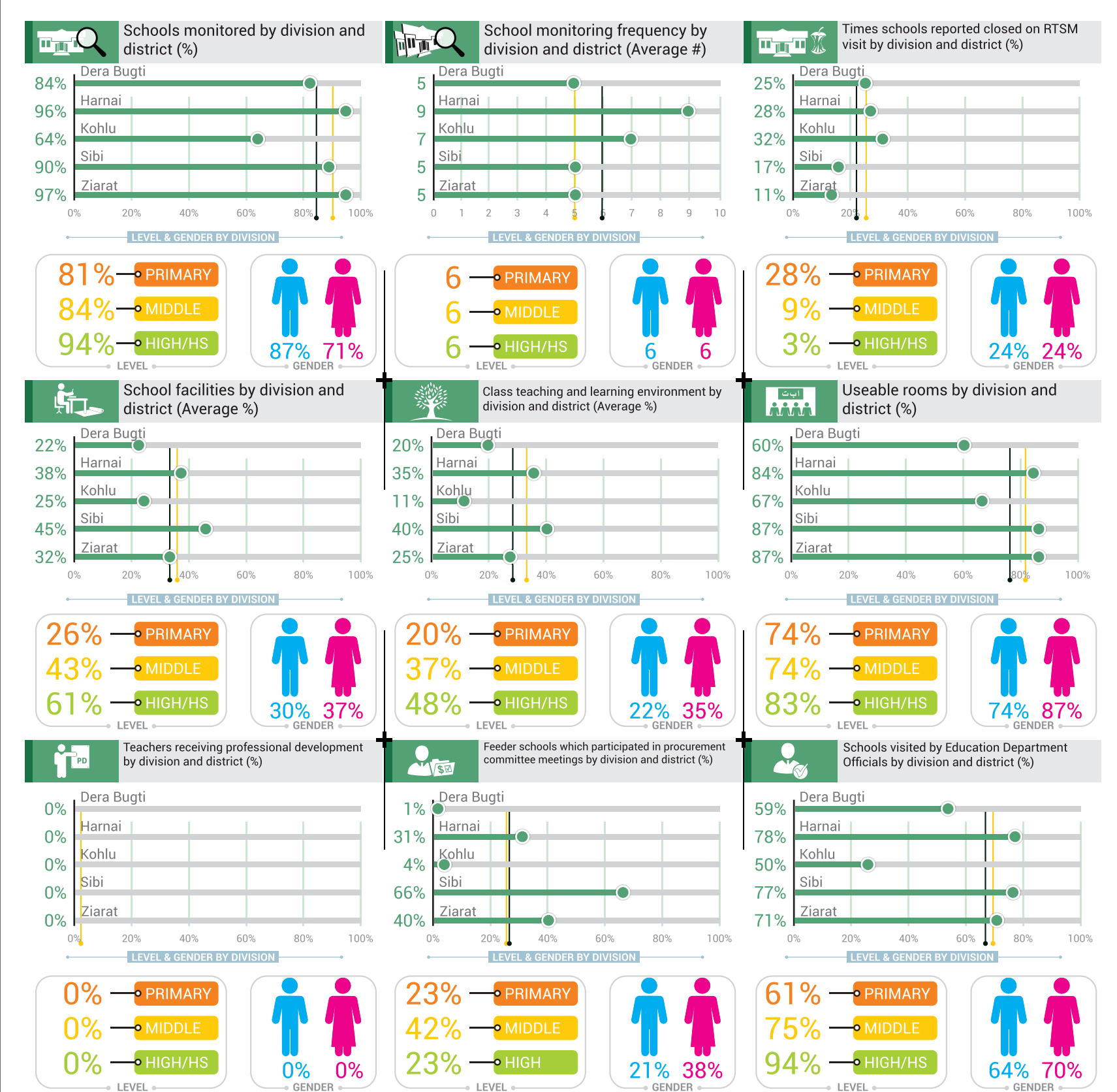
## DIVISIONAL REPORT CARD

Based on findings of 57,158 monitoring visits to 12,925 schools from Jan 2018 to May 2019 in Balochistan



**BALUCHISTAN SUMMARY OF RESULTS**  
JAN 2018-MAY 2019

EMIS is technically supported by Innovative Development Organization (IDO).  
www.emis.gob.pk



### How to Read the Booklet

**Charts**  
The title of the chart describes the indicator and unit(s) of disaggregation. The horizontal bars show performance of individual districts, the black vertical bar shows average value by division whereas the yellow vertical bar shows the average value by province. Level and gender wise details in each chart represent values by division.

**Table**  
The table shows cluster level performance of schools. Column headings describe the indicator. Read description section for details of column headings.

**Description**  
Provides details on indicator and its composition matched against the column heading number.

**Distinction** awarded to clusters where:  
 ☆ No schools (0%) were found closed at the time of visit.  
 ★ Average attendance of students, teaching and non-teaching staff is 80% or above.  
 ☆ Overall average of facilities, teaching and learning environment, useable rooms and toilets is 70% or above.

Cluster Schools and Monitoring Visits			Cluster Operations		Cluster Attendance		Cluster Environment				Cluster Participation						
Cluster BEIMS No	Cluster Name	Total Schools	Schools in Cluster Monitored (%)	Monitoring Visits (#)	Times Schools Closed on visit (%)	Student (%)	Teaching Staff (%)	Non Teaching Staff (%)	Facilities (%)	Teaching and Learning (%)	Useable Rooms (%)	Useable Toilets (%)	Schools without Toilets (%)	Child Clubs Formed (%)	Teachers enrolled in CPD* (%)	Feeder Schools in Procurement Meetings (%)	Schools visited by EFOs* (%)
08114	GBHS ZARDALO	10	100%	81	23%	78%	64%	88%	39%	41%	87%	20%	20%	9%	0%	16%	9%
08132	GBHS GHURMAI	10	80%	60	42%	76%	77%	96%	27%	20%	94%	27%	0%	0%	0%	8%	8%
08143	GBHS SPIN TANGI	14	79%	67	48%	83%	64%	94%	27%	16%	84%	27%	36%	1%	1%	12%	6%
08153	GGHS KHOST	11	100%	97	16%	82%	78%	75%	48%	56%	99%	26%	36%	7%	0%	52%	9%
08179	GBHS GO CHEENA	9	89%	70	14%	69%	75%	79%	38%	40%	85%	11%	50%	0%	0%	39%	11%
08180	GGHS HARNAI	18	100%	175	38%	79%	78%	87%	40%	46%	90%	46%	28%	3%	1%	48%	7%
08181	GBHS HARNAI	13	100%	125	23%	81%	86%	99%	44%	33%	68%	47%	8%	3%	2%	26%	9%
08182	GBHS KHIDRANI HARNAI	7	100%	58	31%	80%	79%	94%	40%	26%	89%	20%	29%	5%	0%	10%	12%
08183	GBHS ASPANI	13	100%	97	48%	73%	70%	90%	28%	18%	89%	33%	46%	0%	0%	11%	8%
08184	GGHS GHARIB ABAD(HARNAI)	18	100%	157	25%	72%	78%	94%	37%	41%	79%	21%	22%	4%	0%	52%	8%
08186	GBHS NAKUS	16	94%	157	29%	77%	69%	89%	39%	23%	71%	41%	40%	0%	0%	21%	10%
08187	GBHS SHAHRAG	21	95%	155	28%	78%	77%	97%	34%	25%	85%	29%	45%	2%	1%	24%	10%
08188	GBHS KHOST	12	100%	104	10%	82%	78%	100%	53%	46%	95%	20%	33%	3%	0%	10%	12%
10436	GGHS KILLI SADULLAH	14	100%	119	21%	75%	69%	59%	38%	50%	81%	7%	43%	4%	0%	55%	10%
50214	GGHS KILLI ASPANI NAKUS	1	100%	11	0%	67%	61%	100%	53%	71%	100%	0%	N/A	0%	0%	N/A	100%

**HARNAI**

Note: The findings of RTSM visits represent the performance of schools as noticed at the time of visit and may not be representative of routine school functions.

- Unique identification number of cluster head schools in ascending order
- Shows the percentage of times out of total monitoring visits on which schools were found closed.
- Student/teaching staff and non teaching staff attendance value is a sum of the total number of students/staff monitored on all visits.
- Percentage of school facilities is a composite average of availability of safe drinking water, chairs and table for teachers, mats and desks for students and blackboard and chalks in classes.
- Percentage of teaching and learning environment in school is a composite average of students having textbook, availability of syllabus in class and number of students wearing uniform.
- Shows usability of available rooms to carry out teaching and learning processes and usability of available toilets to fulfill sanitation and safe hygiene needs of students. The monitoring tools employed here are based on observation of the monitor and interview with school/class teacher(s)
- Refers to the number of teachers in cluster and feeder schools who are participating in Continuous Professional Development (CPD)\* training.
- Refers to the participation of staff of feeder schools in procurement committee meetings convened by cluster head schools based on information provided by feeder schools.
- Refers to the percentage of schools in cluster visited by Education Field Officials (EFO)\* during the reporting period.



Download the Electronic copy of **STATIC BOOKLET** JUNE 2019  
click the Download button



Watch a video documentary on the Balochistan Real Time School Monitoring System  
click the play button

## CLUSTER REPORT CARD

Cluster Schools and Monitoring Visits			Cluster Operations			Cluster Attendance			Cluster Environment				Cluster Participation				
01	02	03	04	05	06	07	08	09	10	11	12	13	14	15	16	17	18
Cluster BEWIS No	Cluster Name	Total Schools	Schools in Cluster Monitored (%)	Monitoring Visits (#)	Times Schools Closed on visit (%)	Student (%)	Teaching Staff (%)	Non Teaching Staff (%)	Facilities (%)	Teaching and Learning (%)	Useable Rooms (%)	Usable Toilets (%)	Schools without Toilets (%)	Child Clubs Formed(%)	Teachers enrolled in CPD* (%)	Feeder Schools in Procurement Meetings (%)	Schools visited by EFOs* (%)
07166	GGHS LEHRI	13	85%	54	20%	59%	68%	88%	51%	46%	74%	24%	9%	0%	0%	61%	20%
07206	GGHS BAKHTIAR ABAD DOMKI	7	100%	22	36%	41%	50%	67%	25%	27%	85%	44%	14%	0%	0%	50%	27%
07213	GBHS LEHRI	12	92%	37	11%	57%	85%	93%	50%	40%	81%	49%	9%	0%	0%	86%	27%
07214	GBHS TANIA	12	92%	36	14%	66%	83%	100%	44%	38%	86%	33%	36%	0%	0%	69%	28%
07215	GBHS BAKHTIAR ABAD DOMKI	21	81%	81	6%	67%	81%	65%	44%	46%	94%	36%	29%	0%	0%	70%	19%
07217	GBHS TRIHARH	20	85%	58	24%	67%	70%	76%	35%	27%	87%	31%	35%	0%	0%	62%	22%
07981	GBHS TALI	12	83%	62	13%	68%	88%	96%	53%	39%	88%	42%	0%	0%	0%	77%	11%
07982	GGHS TALI	21	81%	107	30%	54%	61%	96%	35%	37%	92%	14%	6%	0%	0%	47%	9%
07986	GBHS SULTAN KOT	6	100%	26	27%	66%	72%	92%	29%	30%	88%	32%	0%	0%	0%	62%	15%
07987	GBHS DHAPAL KHORD	11	100%	87	3%	75%	83%	88%	63%	48%	78%	52%	9%	0%	0%	82%	11%
07997	GGMODHS SIBI	10	90%	52	19%	68%	75%	91%	53%	52%	89%	49%	0%	0%	0%	71%	12%
07999	GBHS BADRAH	10	60%	18	17%	68%	67%	100%	26%	16%	54%	80%	33%	0%	0%	44%	11%
08000	GGHS DHAPAL KHORD	6	100%	26	19%	37%	83%	83%	53%	43%	92%	59%	0%	0%	0%	69%	19%
08001	GGHS SIBI TOWN	5	100%	28	7%	66%	76%	82%	63%	65%	99%	71%	0%	0%	0%	75%	18%
08002	GGHS ALLAHABAD	6	67%	19	26%	63%	78%	100%	42%	29%	100%	79%	25%	0%	0%	32%	11%
08003	GGHS GHARIB ABAD	8	100%	47	21%	59%	79%	87%	49%	45%	98%	42%	0%	0%	0%	66%	11%
08004	GBHS CHANDIA	21	90%	98	34%	70%	74%	95%	23%	17%	81%	22%	5%	0%	0%	59%	6%
08021	GBHS KHAJAK	7	86%	45	9%	74%	85%	100%	45%	46%	76%	44%	33%	0%	0%	76%	11%
08022	GBMODHS PILOT SIBI	9	100%	65	14%	62%	90%	96%	54%	46%	87%	56%	0%	0%	0%	77%	12%
08023	GBHS KARAK	7	86%	29	31%	74%	78%	100%	24%	21%	85%	0%	33%	0%	0%	48%	10%
08024	GGHS KHAJAK	5	100%	38	11%	70%	71%	88%	62%	72%	84%	38%	0%	0%	0%	71%	13%
08025	GGHS KARAK	3	100%	12	17%	70%	84%	100%	50%	58%	100%	56%	0%	0%	0%	33%	8%
08027	GGHS LUNI	6	100%	31	13%	68%	83%	100%	59%	53%	90%	38%	0%	0%	0%	71%	16%
08043	GBHSS LUNI	7	100%	46	7%	67%	78%	98%	60%	51%	96%	52%	0%	0%	0%	80%	13%
08044	GGHS RAILWAY COLONY SIBI	4	100%	28	7%	74%	82%	89%	68%	73%	88%	78%	0%	0%	0%	75%	14%
08065	GBHS RAILWAY COLONY SIBI	5	100%	38	3%	65%	87%	96%	64%	41%	80%	82%	0%	0%	0%	74%	13%
08068	GGHS MARGHAZANI	7	100%	43	26%	47%	71%	72%	38%	36%	86%	9%	0%	0%	0%	53%	14%
08075	GBHS GHARIBABAD	4	100%	30	7%	69%	87%	84%	55%	48%	92%	54%	0%	0%	0%	67%	13%
08080	GBHS ALLAHABAD	8	100%	57	19%	68%	82%	100%	53%	27%	89%	75%	13%	0%	0%	63%	14%
08104	GGHS DEHPAL KALAN	4	100%	19	11%	64%	76%	100%	61%	66%	100%	35%	0%	0%	0%	58%	21%
01026	GBHS KHARWARI BABA	8	100%	26	0%	88%	77%	75%	40%	28%	99%	15%	13%	0%	0%	23%	27%
01031	GBHS KAWAS SHARQI	6	100%	28	11%	77%	74%	68%	38%	21%	58%	3%	50%	0%	0%	46%	14%
01032	GBHS AHMADOON	19	100%	101	10%	79%	68%	90%	30%	22%	85%	67%	68%	0%	0%	61%	15%
01033	GGHS ZIARAT	13	92%	51	6%	71%	60%	65%	45%	24%	94%	36%	42%	0%	0%	14%	22%
01037	GGHS ZINDRA	17	100%	71	8%	82%	65%	80%	39%	33%	96%	36%	18%	0%	0%	42%	18%
01038	GGHS KAWAS GHARBI	14	93%	67	10%	84%	63%	47%	39%	29%	91%	26%	31%	0%	0%	34%	16%
01040	GGHS JUMA AGHA AHMADOON BHATTO	20	100%	117	21%	82%	62%	53%	30%	21%	79%	48%	50%	0%	0%	32%	9%
01050	GBHS LOWER KACH	10	90%	46	41%	77%	49%	100%	13%	8%	72%	0%	89%	0%	0%	22%	9%
01057	GBHS KAWAS GHARBI	4	100%	23	0%	79%	68%	65%	43%	29%	95%	41%	0%	0%	0%	52%	13%
01058	GBHS ZINDRA	3	100%	14	14%	72%	69%	60%	32%	16%	100%	53%	33%	0%	0%	14%	14%
01059	GBHS CHEENA	7	100%	47	6%	84%	81%	100%	36%	37%	91%	0%	43%	0%	0%	45%	13%
01060	GBHS KAN DEPOT	7	100%	54	0%	83%	83%	86%	53%	44%	92%	22%	0%	0%	0%	69%	13%
01068	GBHS WERCHOOM	2	100%	12	0%	77%	82%	100%	57%	48%	100%	6%	0%	0%	0%	58%	17%
01072	GBHS MANNA	19	100%	76	1%	80%	63%	84%	38%	31%	94%	21%	37%	0%	0%	62%	17%
01075	GBHS SPAZUNDI	12	100%	70	7%	82%	64%	92%	33%	31%	90%	24%	58%	0%	0%	63%	11%
01102	GBMODHS ZIARAT	21	100%	80	13%	80%	73%	76%	27%	17%	92%	55%	67%	0%	0%	18%	19%
04005	GBHS REGORHA	14	100%	58	5%	81%	65%	86%	26%	23%	84%	0%	64%	0%	0%	43%	17%
04020	GBHS SMALLAN SANJAVI	25	92%	78	10%	87%	71%	100%	25%	23%	83%	48%	74%	0%	1%	42%	22%
04035	GGHSS SANJAVI	19	95%	67	13%	84%	72%	84%	30%	30%	74%	29%	33%	0%	3%	24%	18%
04130	GBHS POI SHARIF	5	100%	15	7%	72%	67%	77%	23%	8%	95%	30%	40%	0%	0%	0%	20%
04134	GBHS TANDWANI	10	100%	36	8%	67%	59%	100%	17%	8%	100%	90%	70%	0%	0%	0%	8%
04157	GBHS AGHBARGH DUMAR	9	89%	33	0%	74%	88%	91%	44%	39%	79%	0%	100%	0%	0%	76%	24%
09182	GGHS REGORA	9	100%	30	33%	81%	75%	100%	26%	21%	93%	41%	56%	0%	0%	17%	13%
08200	GBHS SAR LOAP	11	55%	18	33%	63%	45%	91%	12%	11%	38%	0%	83%	0%	0%	0%	11%
08213	GBHS MALAM	9	100%	30	30%	52%	59%	98%	7%	11%	46%	34%	22%	0%	0%	3%	10%
08228	GBHS BASTI NABI BAKHSH SB	4	75%	13	0%	59%	71%	96%	38%	33%	57%	0%	67%	0%	0%	0%	8%
08229	GBHS KALCHAS	5	80%	10	0%	30%	72%	91%	29%	16%	37%	50%	50%	0%	0%	0%	30%
08230	GBHS BAWANI PATTI	7	86%	15	0%	43%	45%	100%	29%	22%	30%	0%	67%	0%	0%	0%	20%
08231	GBHS QALANDRI	6	83%	15	7%	42%	42%	75%	15%	10%	41%	0%	60%	0%	0%	0%	27%
08246	GBHS PATHAR NALA	8	75%	18	61%	38%	30%	47%	14%	12%	43%	0%	83%	0%	0%	0%	6%
08256	GBHS SHUM BHAGLARH	7	57%	13	0%	47%	73%	90%	23%	27%	70%	17%	75%	0%	0%	0%	23%
08258	GBHS SHUM KHAIRAN	12	83%	33	12%	50%	66%	94%	36%	33%	75%	40%	80%	0%	0%	0%	6%
08264	GBHS PIR KOH	11	91%	38	5%	68%	66%	96%	43%	33%	73%	21%	80%	0%	0%	3%	21%
08266	GBHS SHUM AMIRIAN KHALIRA	16	88%	60	20%	59%	72%	94%	11%	18%	56%	37%	50%	0%	0%	0%	13%
08273	GBHS KILLI HAJI MIAN KHAN PELAWAGH	13	85%	46	13%	68%	64%	100%	16%	22%	37%	53%	55%	0%	0%	0%	15%
08281	GGHS BEKAR	18	78%	35	31%	62%	55%	83%	13%	13%	79%	70%	64%	0%	0%	0%	14%
08283	GBHS BEKAR	10	60%	25	8%	68%	76%	95%	19%	30%	48%	33%	83%	0%	0%	4%	4%
08293	GBHS PINGOORA (DAD MUHAMMAD)	5	80%	13	31%	57%	30%	100%	19%	22%	68%	0%	100%	0%	0%	0%	8%
08301	GBHS HABIB RAHI	22	59%	65	37%	65%	64%	75%	24%	23%	60%	24%	85%	0%	0%	0%	11%
08310	GBMODHS DERA BUGTI	29	100%	179	21%	70%	73%	94%	35%	31%	61%	29%	52%	0%	0%	1%	12%
08311	GGHS DERA BUGTI	18	94%	142	45%	52%	50%	96%	30%	17%	61%	71%	29%	0%	0%	0%	6%
08320	GBHS KILLI FAIZ MUHAMMAD	24	100%	114	18%	68%	70%	76%	30%	33%	63%	46%	63%	0%	0%	0%	16%
08369	GBHS PAISH BOGI	8	88%	33	55%	46%	40%	86%	14%	8%	30%	0%	71%	0%	0%	0%	12%
08384	GBHS KILLI KARAM KHAN	8	100%	46	4%	43%	67%	80%	35%	14%	72%	66%	50%	0%	0%	2%	17%
08390	GBHS OLD SUI	9	100%	56	25%	63%	79%	94%	32%	16%	89%	49%	56%	0%	0%	5%	11%
08392	GBHS LOTI	10	40%	15	0%	34%	59%	48%	4%	19%	28%	0%	75%	0%	0%	0%	20%
08401	GBHS BEEH	7	100%	17	41%	35%	43%	83%	10%	7%	58%	0%	86%	0%	0%	0%	12%
08403	GBHS YAROO PAT	22	100%	120	21%	56%	46%	88%	7%	10%	46%	41%	77%	0%	0%	0%	9%
08415	GBHS NAWAB DIN COLONY	5	100%	23	17%	55%	74%	85%	14%	16%	80%	50%	80%	0%	0%	9%	22%
08416	GGHS BUGTI COLONY SUI	13	77%	107	49%	76%	41%	77%	30%	16%	69%	83%	30%	0%	0%	0%	7%
08418	GBHS SUI	14	100%	74	9%	52%	75%	76%	15%	16%	67%	35%	43%	0%	0%	5%	18%
08433	GBHS KILLI PATHAN KHAN KIAZAI LOTI	12	58%	18	17%	59%	73%	95%	14%	22%	85%	56%	57%	0%	0%	0%	17%
09731	GGHS KILLI PATHAN	4	50%	15	40%	38%	23%	N/A	23%	8%	15%	100%	50%	0%	0%	0%	7%
12405	GBHS KILLI SAJJO KHAN	5	100%	27	0%	58%	84%	100%	39%	20%	72%	46%	20%	0%	0%	4%	19%
15119	GGHS KILLI SAJJO KHAN PHELLAWAGH	19	79%	29	34%	62%	54%	88%	10%	15%	76%	32%	53%	0%	0%	0%	28%
02597	GGHS KOHLU	24	8%	24	0%												
02637	GBMODHS KOHLU	30	97%	240	30%	68%	62%	86%	29%	13%	78%	32%	83%	0%	0%	9%	10%
02639	GBHS PAZHA	16	100%	81	42%	49%	49%	31%	20%	10%							