

QUETTA DIVISION

Part II



Killa Abdullah
Quetta

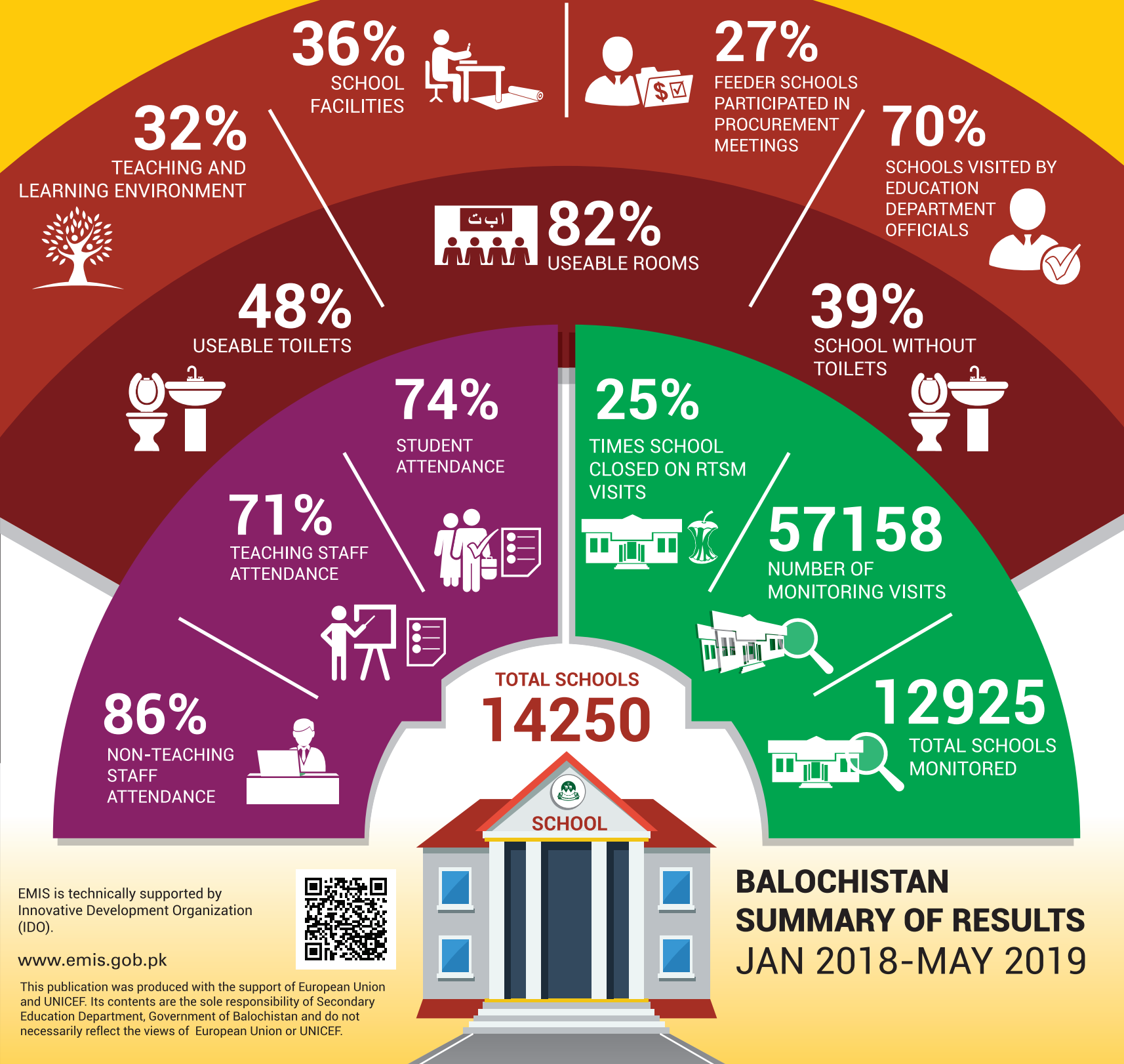
Pishin

PERFORMANCE MANAGEMENT CELL (PMC)
Policy, Planning and Implementation Unit (PIU)
Secondary Education Department, Balochistan

BALUCHISTAN REAL TIME SCHOOL MONITORING SYSTEM

DIVISIONAL REPORT CARD

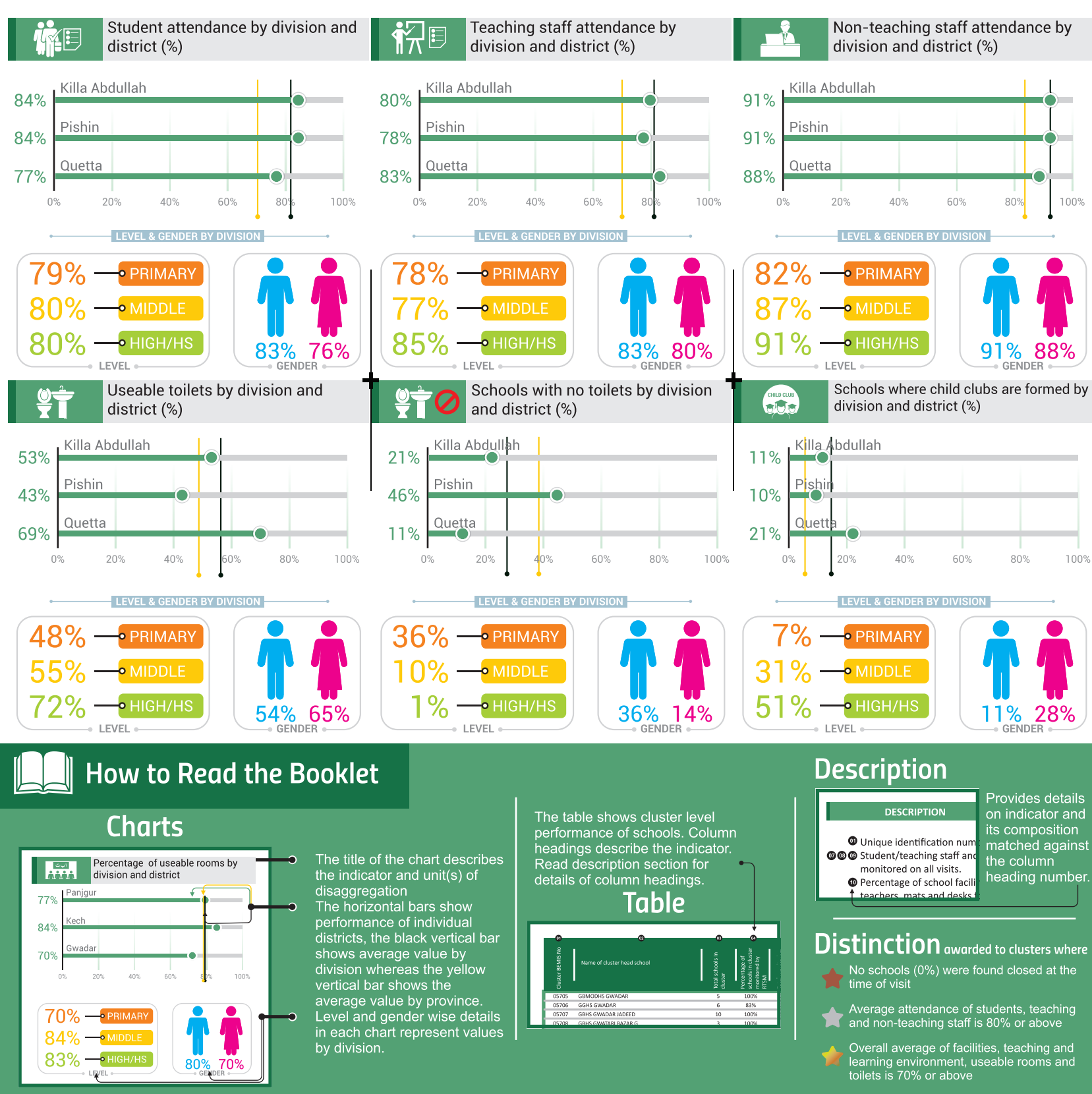
Based on findings of 57,158 monitoring visits to 12,925 schools from Jan 2018 to May 2019 in Balochistan



EMIS is technically supported by Innovative Development Organization (IDO).

www.emis.gob.pk

This publication was produced with the support of European Union and UNICEF. Its contents are the sole responsibility of Secondary Education Department, Government of Balochistan and do not necessarily reflect the views of European Union or UNICEF.



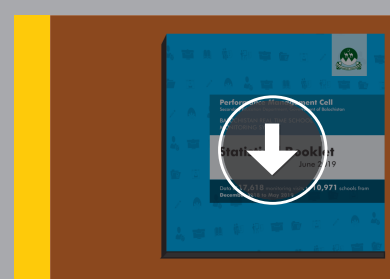
Cluster Schools and Monitoring Visits		Cluster Operations		Cluster Attendance		Cluster Environment			Cluster Participation								
Cluster BEIMS No	Cluster Name	Total Schools	Schools in Cluster Monitored (%)	Monitoring Visits (#)	Times Schools Closed on visit (%)	Student (%)	Teaching Staff (%)	Non Teaching Staff (%)	Facilities (%)	Teaching and Learning (%)	Useable Rooms (%)	Useable Toilets (%)	Schools without Toilets (%)	Child Clubs Formed (%)	Teachers enrolled in CPD* (%)	Feeder Schools in Procurement Meetings (%)	Schools visited by EFOs* (%)
01384	GBHS KHOSHAB	9	100%	44	16%	91%	95%	82%	40%	50%	80%	73%	78%	18%	0%	36%	18%
01448	GBHS SHAHDE ZAI	23	100%	64	22%	86%	71%	94%	43%	33%	76%	55%	39%	6%	0%	8%	33%
01463	GBHS SARANAN	22	100%	101	27%	82%	89%	100%	45%	27%	90%	43%	50%	12%	0%	9%	18%
01557	GBHS MULLA AGHBARG	26	100%	64	17%	77%	80%	78%	42%	40%	85%	66%	58%	13%	0%	16%	34%
01567	GBHS BARSHORE	46	100%	151	18%	83%	77%	95%	38%	37%	79%	39%	72%	5%	1%	34%	26%
01580	GBHS BAGH	45	98%	170	25%	84%	71%	88%	30%	25%	69%	10%	61%	1%	0%	21%	22%
01621	GBHS KUT MUHAMMAD SHAH	27	100%	65	23%	64%	57%	75%	32%	24%	84%	24%	74%	0%	0%	29%	31%
01635	GBHS QILLAH HAJI KHAN	29	100%	114	48%	78%	53%	73%	22%	13%	68%	24%	72%	0%	0%	6%	15%
01638	GBHS GHAIZH	35	100%	94	35%	79%	53%	74%	31%	22%	79%	33%	71%	0%	0%	17%	31%
01667	GGHS BARSHORE ADAH	18	100%	44	41%	76%	44%	25%	32%	37%	80%	39%	39%	9%	0%	14%	27%
01668	GGHS QILLAH VIALA	18	100%	47	47%	81%	63%	N/A	32%	36%	91%	32%	50%	6%	0%	11%	32%
01679	GBHS SAAGI	22	100%	61	39%	84%	60%	100%	27%	20%	79%	20%	64%	0%	0%	18%	21%
08504	GBHS QILLAH KHOSHDI KHAN	16	100%	50	18%	85%	80%	88%	41%	37%	74%	20%	69%	8%	0%	36%	26%
10017	GGHS SAGI TOBA KAKRI	9	100%	25	40%	83%	38%	63%	27%	21%	73%	25%	56%	0%	0%	8%	20%
10030	GGHS CHURMIAN	10	100%	34	18%	84%	67%	89%	38%	38%	82%	42%	40%	21%	0%	38%	12%
10033	GGHS WARYA (ROD MULLAZAI)	20	100%	72	10%	78%	89%	100%	42%	30%	92%	11%	45%	10%	1%	42%	25%
10455	GGHS KARBALA	8	100%	25	48%	77%	64%	100%	33%	27%	92%	46%	13%	8%	0%	12%	12%
10756	GGHS MANZAKI BOSTAN	11	100%	32	25%	77%	55%	100%	35%	36%	79%	34%	18%	3%	0%	13%	9%
12719	GGHS MACHAN	33	97%	56	50%	79%	56%	47%	28%	31%	85%	50%	19%	30%	0%	36%	30%
14154	GBHS MEHRULLAH GHARSHEENAN	9	100%	35	14%	91%	89%	93%	37%	40%	83%	50%	56%	11%	0%	23%	26%

Note: The findings of RTSM visits represent the performance of schools as noticed at the time of visit and may not be representative of routine school functions.

- Unique identification number of cluster head schools in ascending order
- Shows the percentage of times out of total monitoring visits on which schools were found closed.
- Student/teaching staff and non teaching staff attendance value is a sum of the total number of students/staff monitored on all visits.
- Percentage of school facilities is a composite average of availability of safe drinking water, chairs and table for teachers, mats and desks for students and blackboard and chalks in classes.

- Percentage of teaching and learning environment in school is a composite average of students having textbook, availability of syllabus in class and number of students wearing uniform.
- Shows usability of available rooms to carry out teaching and learning processes and usability of available toilets to fulfill sanitation and safe hygiene needs of students. The monitoring tools employed here are based on observation of the monitor and interview with school/class teacher(s)
- Refers to the number of teachers in cluster and feeder schools who are participating in Continuous Professional Development (CPD)* training.

- Refers to the participation of staff of feeder schools in procurement committee meetings convened by cluster head schools based on information provided by feeder schools.
- Refers to the percentage of schools in cluster visited by Education Field Officials (EFO)* during the reporting period.



Download the Electronic copy of **STATIC BOOKLET** JUNE 2019

click the Download button



Watch a video documentary on the Balochistan Real Time School Monitoring System

click the play button

CLUSTER REPORT CARD

Cluster Schools and Monitoring Visits			Cluster Operations			Cluster Attendance			Cluster Environment					Cluster Participation				
01	02	03	04	05	06	07	08	09	10	11	12	13	14	15	16	17	18	
Cluster BE/MIS No	Cluster Name	★	Total Schools	Schools in Cluster Monitored (%)	Monitoring Visits (#)	Times Schools Closed on Visit (%)	Student (%)	Teaching Staff (%)	Non Teaching Staff (%)	Facilities (%)	Teaching and Learning (%)	Usable Rooms (%)	Usable Toilets (%)	Schools without Toilets (%)	Child Clubs Formed(%)	Teachers enrolled in CPD* (%)	Feeder Schools in Procurement Meetings (%)	Schools visited by EFOs* (%)
01104	GBHS YARO	★	9	100%	37	11%	91%	77%	100%	59%	41%	86%	63%	22%	5%	0%	24%	24%
01118	GBHS HAIDERZAI PISHIN	★	7	100%	25	12%	88%	81%	100%	61%	50%	93%	46%	43%	20%	0%	12%	28%
01122	GBHS KILLI ABDULLAHJAN PISHIN	★	9	100%	42	12%	88%	86%	95%	65%	50%	91%	51%	11%	10%	0%	24%	21%
01126	GBMODHS PISHIN	★	20	100%	70	19%	82%	88%	100%	50%	38%	82%	45%	35%	10%	0%	14%	23%
01127	GBHS KARBALA	★	10	90%	43	23%	88%	85%	75%	66%	49%	89%	65%	22%	37%	0%	28%	19%
01131	GBHS HAKALZAI	★	12	100%	51	20%	85%	80%	100%	52%	44%	86%	41%	8%	20%	0%	12%	24%
01143	GBHS SHAHEED SHER MOHAMAD MACHA	★	20	100%	100	14%	90%	87%	97%	51%	44%	87%	57%	30%	19%	0%	27%	16%
01150	GBHS MANZAKI	★	21	100%	86	23%	87%	90%	98%	43%	41%	94%	57%	57%	13%	0%	37%	22%
01153	GBHS BALAH SARKHAN ZAI	★	11	100%	43	33%	83%	87%	100%	37%	32%	84%	32%	45%	9%	0%	16%	26%
01157	GBHS BALAH YASEEN ZAI	★	21	95%	81	21%	81%	76%	95%	45%	36%	77%	48%	30%	10%	0%	11%	22%
01181	GBHS TOREY SHAH	★	17	100%	60	33%	85%	89%	87%	33%	21%	76%	31%	53%	0%	0%	12%	18%
01186	GBHS NAU ABAD	★	12	100%	53	28%	87%	87%	100%	41%	41%	94%	65%	50%	9%	0%	17%	21%
01211	GBHS ALI ZAI	★	31	94%	146	38%	87%	82%	95%	34%	25%	85%	68%	34%	3%	0%	21%	12%
01226	GBHS HURAMZAI	★	13	100%	65	12%	85%	86%	90%	53%	41%	93%	77%	62%	28%	0%	25%	15%
01230	GBHS GANGALZAI	★	17	94%	68	26%	87%	86%	100%	46%	34%	83%	53%	6%	10%	0%	21%	19%
01231	GGHS HAKALZAI	★	18	94%	50	32%	75%	74%	100%	36%	36%	93%	24%	29%	12%	0%	12%	28%
01232	GGHS HURAMZAI	★	17	100%	74	49%	77%	47%	92%	31%	27%	83%	63%	6%	22%	0%	7%	12%
01249	GGHS KILLI ABDUL RAZAQUE	★	6	100%	26	12%	78%	81%	92%	71%	72%	94%	61%	17%	38%	0%	42%	23%
01250	GGHS YAROO	★	6	100%	22	14%	71%	73%	100%	56%	59%	99%	45%	17%	23%	0%	18%	23%
01255	GGHSS PISHIN	★	32	97%	108	41%	79%	70%	100%	42%	40%	91%	54%	29%	18%	0%	19%	23%
01257	GBHS MURGHA ZIKRIYA ZAI	★	20	100%	86	15%	90%	84%	89%	36%	40%	83%	14%	65%	9%	0%	36%	21%
01258	GBHS KHANOZAI	★	17	100%	77	12%	91%	94%	100%	49%	47%	91%	68%	35%	16%	0%	38%	22%
01270	GBHS YOUSAF KACH	★	21	100%	84	32%	91%	77%	100%	29%	32%	82%	67%	81%	5%	0%	25%	19%
01271	GBHS BALOZAI	★	23	100%	118	15%	91%	92%	90%	41%	39%	83%	30%	52%	8%	0%	43%	18%
01278	GBHS CHURMIAN	★	16	100%	69	10%	85%	88%	80%	44%	48%	83%	68%	56%	12%	0%	58%	22%
01288	GGHS SHARON	★	12	100%	45	13%	88%	86%	91%	46%	54%	94%	35%	17%	16%	0%	67%	20%
01299	GBHS KOZH NIGAND	★	10	100%	34	18%	86%	92%	93%	42%	40%	89%	18%	50%	0%	0%	50%	26%
01312	GBHS DILSORA	★	1	100%	4	0%	91%	90%	100%	57%	60%	74%	17%	N/A	100%	0%	N/A	100%
01330	GBHS ROD MULLA ZAI	★	26	100%	102	22%	91%	87%	92%	38%	35%	81%	22%	65%	4%	0%	48%	23%
01342	GBHS GHARSHINAN	★	14	100%	54	22%	86%	87%	70%	30%	33%	91%	10%	79%	0%	0%	20%	20%
01345	GGHS MUGHTIAN	★	7	100%	20	10%	74%	86%	100%	53%	50%	92%	42%	14%	20%	0%	45%	30%
01347	GGHS KHANO ZAI	★	15	100%	60	10%	92%	84%	98%	60%	67%	96%	56%	20%	32%	0%	73%	20%
01348	GGHS BOSTAN	★	11	100%	34	15%	87%	78%	92%	55%	54%	86%	54%	9%	24%	0%	53%	12%
01356	GGHS BALOZAI	★	15	100%	47	19%	92%	79%	100%	52%	61%	92%	19%	13%	15%	0%	62%	26%
01357	GGHS GHARSHINAN	★	10	100%	30	17%	82%	68%	93%	38%	37%	83%	14%	40%	3%	0%	13%	23%
01372	GBHS BOSTAN	★	20	100%	68	25%	85%	78%	90%	39%	35%	82%	28%	45%	15%	0%	44%	24%
01377	GBHS GHULAM JILANI	★	12	100%	40	30%	88%	87%	81%	34%	31%	53%	61%	58%	3%	0%	38%	20%
01380	GBHS KHANAI	★	13	100%	52	17%	89%	87%	100%	44%	50%	79%	22%	31%	12%	0%	56%	23%
01246	GBHSS QILLAH ABDULLAH	★	53	96%	184	20%	85%	80%	97%	40%	38%	74%	38%	27%	8%	2%	33%	26%
01390	GGHS INAYATULLAH KARAIZ GULISTAN	★	7	86%	17	12%	75%	71%	100%	50%	46%	92%	48%	0%	29%	6%	18%	29%
01391	GGHS PIR ALIZAI	★	16	100%	46	30%	83%	68%	90%	38%	40%	76%	34%	6%	20%	2%	17%	26%
01404	GBHS MANGALZAI	★	12	92%	18	0%	77%	78%	100%	50%	39%	82%	53%	36%	11%	0%	22%	56%
01408	GBHS NOURAK SULEMAN KHAIL	★	9	100%	28	25%	90%	81%	100%	34%	38%	100%	40%	11%	39%	4%	36%	18%
01418	GBHS KILLI KULAZAI	★	1	100%	3	0%	91%	93%	67%	57%	96%	100%	100%	N/A	100%	0%	N/A	100%
01432	GBHS KILLI ARAMBI MASEZAI	★	10	100%	41	17%	94%	93%	100%	46%	49%	74%	44%	30%	22%	2%	39%	24%
01447	GBHS MALIK FAIZULLAH SAGI	★	10	90%	25	24%	86%	70%	80%	31%	41%	87%	91%	67%	16%	0%	24%	20%
01478	GBHS KILLI MAIZAI	★	10	100%	33	6%	88%	93%	100%	39%	49%	83%	68%	20%	21%	6%	12%	24%
01492	GBHS MAIZAI ADDAH	★	9	100%	35	29%	89%	92%	100%	33%	44%	73%	38%	56%	29%	0%	14%	20%
01495	GBHS HAJI MUHAMMAD ISMAIL KAKOZAI	★	14	100%	51	37%	89%	84%	100%	34%	30%	75%	28%	50%	6%	0%	16%	22%
01508	GGHS QILLAH ABDULLAH	★	8	63%	16	25%	90%	79%	100%	36%	38%	64%	33%	0%	25%	0%	6%	19%
01510	GBHS DILSORA KARAIZ	★	3	100%	11	0%	91%	87%	100%	54%	58%	88%	27%	0%	18%	9%	36%	27%
01523	GBHS KILLI SYED LAJWAR	★	7	100%	18	22%	89%	90%	100%	46%	41%	96%	31%	14%	17%	0%	28%	28%
01524	GBHS HABIBZAI	★	14	86%	43	37%	90%	79%	100%	33%	32%	95%	16%	25%	2%	0%	5%	19%
01536	GGHS BIBI ZOHRA HABIB ZAI	★	7	86%	18	72%	88%	87%	80%	27%	29%	96%	92%	0%	22%	0%	0%	11%
01548	GBHS PIR ALI ZAI	★	6	100%	18	17%	86%	85%	100%	42%	47%	94%	42%	17%	33%	0%	22%	28%
01550	GBHS JUNGEL PIR ALI ZAI	★	5	100%	19	16%	85%	80%	100%	50%	54%	84%	3%	0%	53%	0%	32%	21%
01551	GBHS GULISTAN	★	1	100%	3	100%	N/A	N/A	N/A	N/A	N/A	N/A	N/A	N/A	N/A	N/A	N/A	N/A
01552	GBHS ABDUL REHMAN ZAI	★	7	100%	22	14%	86%	81%	93%	47%	41%	84%	50%	0%	0%	0%	36%	23%
01703	GBHS DOBANDI TOBA	★	52	77%	116	41%	74%	74%	100%	22%	18%	64%	28%	20%	0%	0%	32%	19%
01707	GBHS ZAIMAL SHADEZAI TOBA ACHAKZAI	★	30	57%	51	51%	57%	43%	50%	8%	7%	41%	13%	35%	0%	4%	10%	10%
01740	GBHS KILLI ABDUL RAHIM	★	13	85%	40	33%	74%	79%	100%	33%	30%	88%	81%	9%	10%	3%	38%	20%
01770	GBHS KILLI BAZ MUHAMMED DAMAN	★	38	95%	123	38%	76%	88%	100%	28%	23%	74%	72%	19%	5%	0%	7%	18%
01771	GBHS MUHALLAH SHAH SAWAR	★	22	95%	81	21%	85%	89%	100%	44%	34%	92%	88%	19%	4%	0%	9%	21%
01772	GBHS LANDI KARAIZ	★	11	100%	42	38%	82%	74%	100%	25%	27%	94%	78%	36%	17%	0%	21%	19%
01774	GBHS CHAMAN	★	21	100%	80	24%	88%	94%	100%	43%	39%	94%	45%	19%	10%	0%	13%	19%
01799	GBHS ROGHANI	★	42	98%	124	48%	79%	64%	70%	21%	24%	78%	63%	29%	2%	0%	10%	19%
01800	GBHS PURANA CHAMAN	★	12	83%	38	42%	68%	75%	88%	24%	16%	72%	50%	10%	3%	0%	26%	18%
01812	GGHS MURDA KARAIZ	★	1	100%	3	0%	93%	88%	83%	71%	79%	83%	96%	N/A	100%	0%	N/A	100%
01823	GBHS MURDA KARAIZ DAMAN CHAMAN	★	15	100%	49	22%	84%	79%	100%	43%	42%	84%	56%	20%	14%	0%	29%	20%
01824	GGHS CHAMAN	★	29	90%	78	47%	79%	78%	89%	27%	25%	74%	77%	0%	13%	1%	19%	18%
01835	GBHS TAJ WATAN DOST DOULAT ABAD	★	12	100%	46	22%	90%	83%	100%	41%	40%	85%	67%	17%	11%	2%	13%	24%
08501	GBHS KILLI KHUDAI RAHIM	★	19	84%	56	55%	74%	59%	96%	19%	18%	80%	45%	25%	2%	0%	4%	16%
09565	GGHS DOLAT ABAD TAJ WATAN DOST	★	11	91%	31	16%	83%	88%	96%	31%	48%	90%	76%	20%	6%	0%	10%	26%
09567	GBHS KILLI MALIK GUL KULAK BAIK	★	8	100%	24	13%	89%	74%	67%	51%	48%	68%	34%	25%	21%	4%	17%	29%
09868	GBHS KILLI KHOWAJH NOOR KULACK	★	8	100%	20	25%	90%	81%	100%	41%	40%	80%	86%	38%	30%	0%	40%	20%
10891	GGHS NOURAK SULEMAN KHAIL	★	3	100%	8	13%	74%	42%	100%	40%	38%	86%	45%	0%	0%	0%	0%	13%
11263	GBHS KHAIRO JAN BAGHICHA CHAMAN	★	11	91%	41	5%	90%	82%	79%	58%	56%	90%	79%	0%	24%	0%	22%	24%
11794	GGHS KILLI SOHAIL KHAN	★	4	100%	10	20%	73%	72%	25%	32%	41%	89%	96%	0%	30%	0%	0%	30%

PISHIN

KILLA ABDULLAH