

QUETTA DIVISION

Part I



Killa Abdullah
Quetta
Pishin

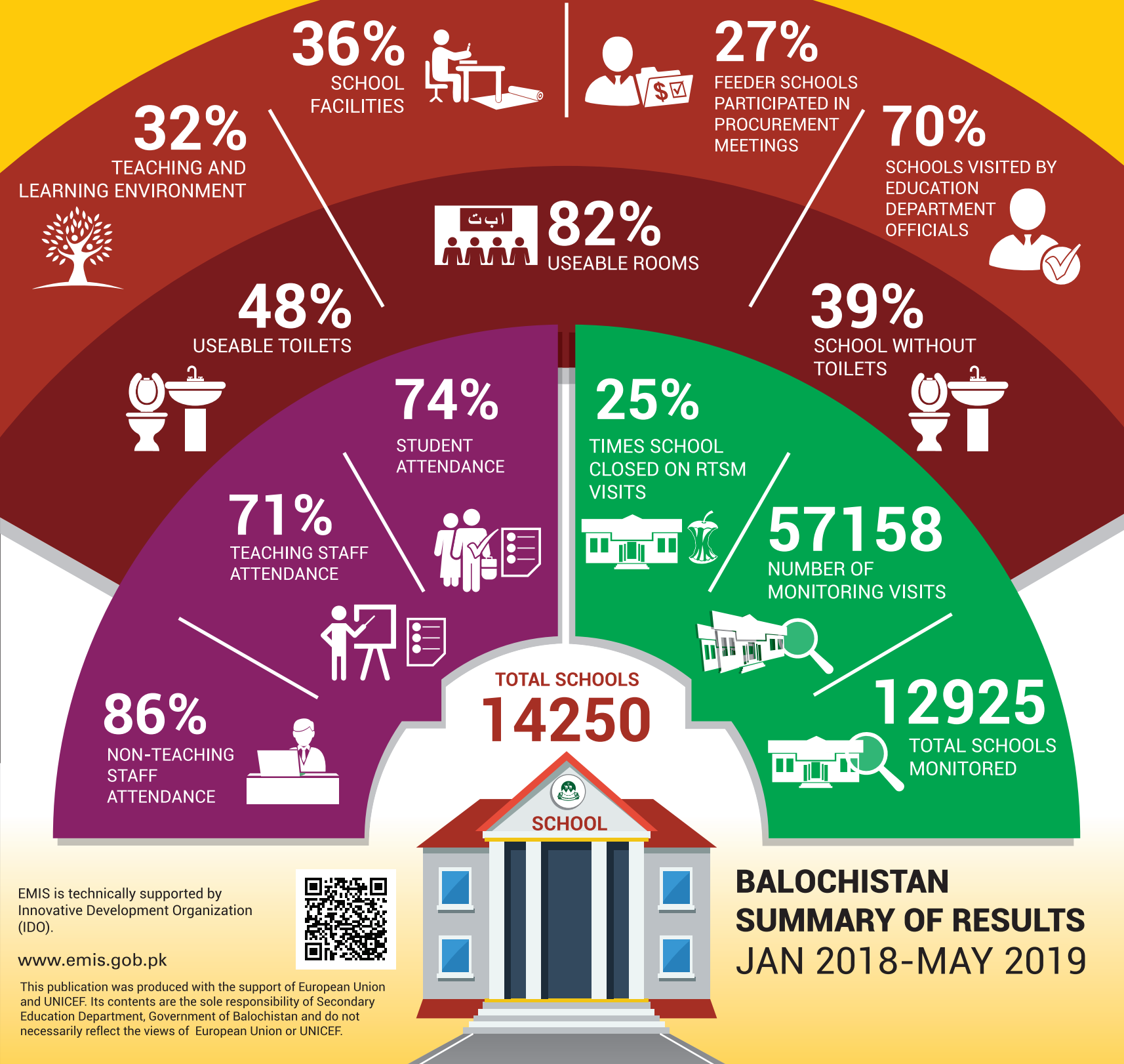


PERFORMANCE MANAGEMENT CELL (PMC)
Policy, Planning and Implementation Unit (PIU)
Secondary Education Department, Balochistan

BALUCHISTAN REAL TIME SCHOOL MONITORING SYSTEM

DIVISIONAL REPORT CARD

Based on findings of 57,158 monitoring visits to 12,925 schools from Jan 2018 to May 2019 in Balochistan

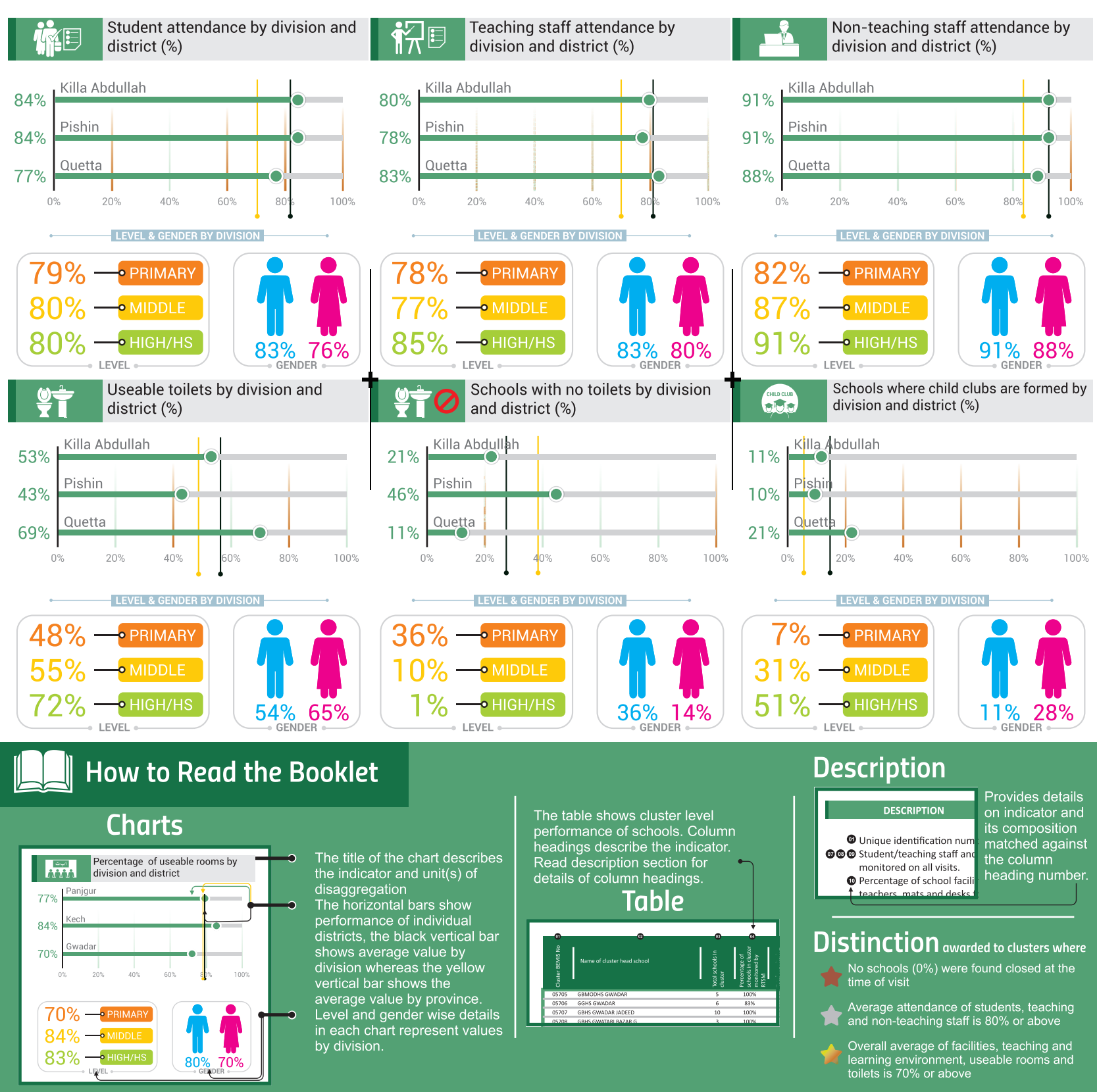
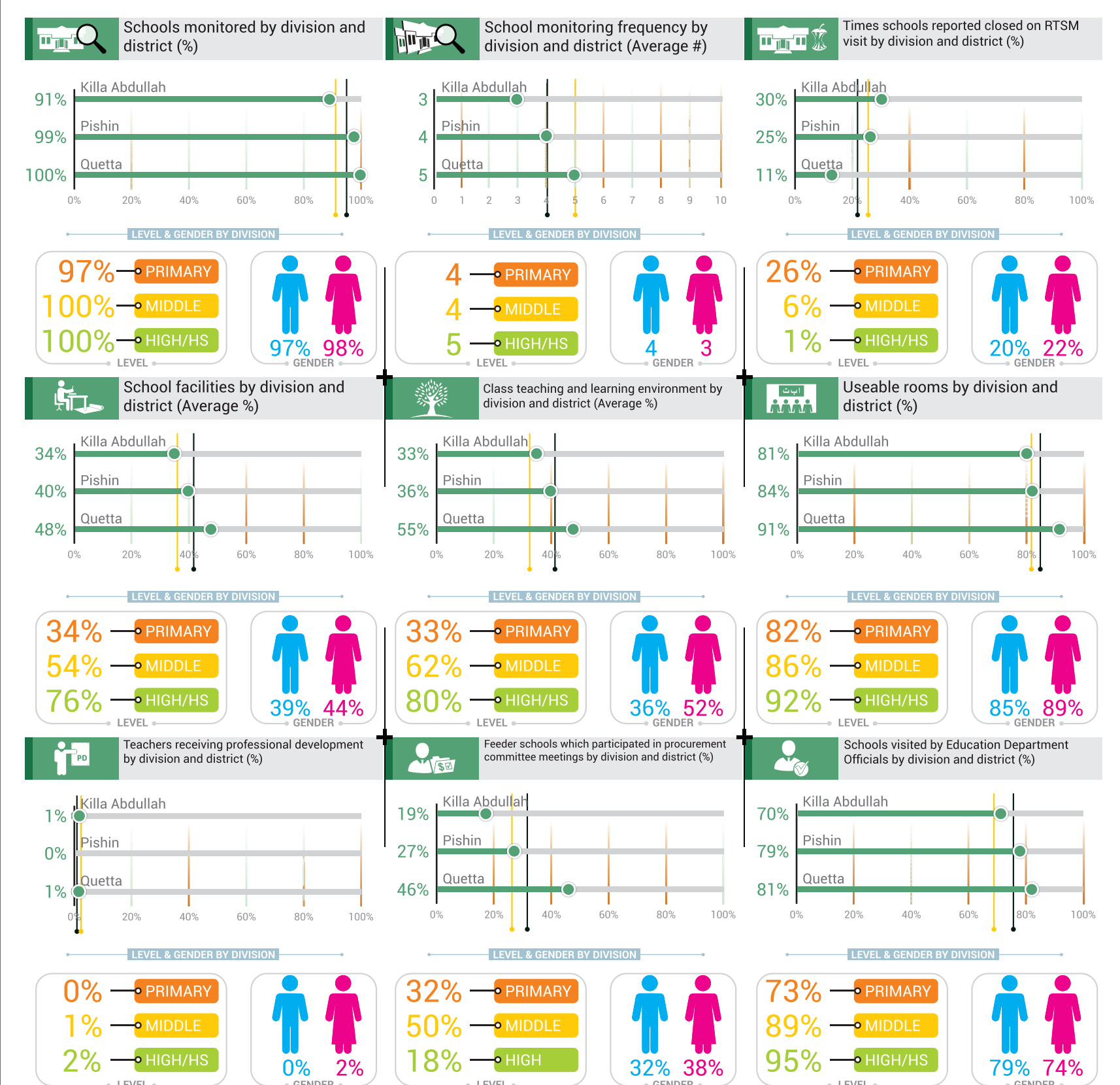


BALUCHISTAN SUMMARY OF RESULTS JAN 2018-MAY 2019

EMIS is technically supported by Innovative Development Organization (IDO).

www.emis.gob.pk

This publication was produced with the support of European Union and UNICEF. Its contents are the sole responsibility of Secondary Education Department, Government of Balochistan and do not necessarily reflect the views of European Union or UNICEF.



How to Read the Booklet

Charts

The title of the chart describes the indicator and unit(s) of disaggregation. The horizontal bars show performance of individual districts, the black vertical bar shows average value by division whereas the yellow vertical bar shows the average value by province. Level and gender wise details in each chart represent values by division.

Table

The table shows cluster level performance of schools. Column headings describe the indicator. Read description section for details of column headings.

Description

Provides details on indicator and its composition matched against the column heading number.

- Unique identification number monitored on all visits.
- Student/teaching staff and non-teaching staff attendance value is a sum of the total number of students/staff monitored on all visits.
- Percentage of school facilities is a composite average of availability of safe drinking water, chairs and table for teachers, mats and desks for students and blackboard and chalks in classes.
- Percentage of teaching and learning environment in school is a composite average of students having textbook, availability of syllabus in class and number of students wearing uniform.
- Shows usability of available rooms to carry out teaching and learning processes and usability of available toilets to fulfill sanitation and safe hygiene needs of students. The monitoring tools employed here are based on observation of the monitor and interview with school/class teacher(s).
- Refers to the number of teachers in cluster and feeder schools who are participating in Continuous Professional Development (CPD)* training.
- Refers to the participation of staff of feeder schools in procurement committee meetings convened by cluster head schools based on information provided by feeder schools.
- Refers to the percentage of schools in cluster visited by Education Field Officials (EFO)* during the reporting period.

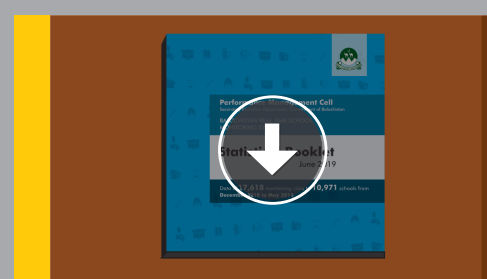
Distinction awarded to clusters where

- No schools (0%) were found closed at the time of visit.
- Average attendance of students, teaching and non-teaching staff is 80% or above.
- Overall average of facilities, teaching and learning environment, useable rooms and toilets is 70% or above.

Cluster Schools and Monitoring Visits			Cluster Operations			Cluster Attendance		Cluster Environment				Cluster Participation					
Cluster BEIMS No	Cluster Name	Total Schools	Schools in Cluster Monitored (%)	Monitoring Visits (#)	Times Schools Closed on visit (%)	Student (%)	Teaching Staff (%)	Non Teaching Staff (%)	Facilities (%)	Teaching and Learning (%)	Useable Rooms (%)	Useable Toilets (%)	Schools without Toilets (%)	Child Clubs Formed (%)	Teachers enrolled in CPD* (%)	Feeder Schools in Procurement Meetings (%)	Schools visited by EFOs* (%)
05123	GBHS HAJI GHAIBI ROAD	9	100%	73	4%	85%	83%	68%	68%	68%	98%	59%	0%	3%	0%	56%	12%
05127	GBHS QAID ABAD QUETTA	2	100%	16	0%	89%	87%	84%	83%	81%	98%	98%	0%	0%	0%	44%	13%
05129	GBHS STAFF COLLAGE QUETTA	1	100%	6	0%	87%	88%	77%	100%	93%	100%	95%	N/A	100%	17%	N/A	100%
05133	GBHS KUCHLAK	30	100%	195	9%	89%	78%	95%	44%	47%	97%	44%	23%	21%	1%	50%	13%
05134	GBHS NASARAN	9	100%	39	21%	81%	79%	78%	26%	30%	100%	32%	0%	15%	0%	28%	10%
05168	GBHS PANJAI	25	100%	95	25%	80%	66%	79%	34%	40%	85%	23%	44%	0%	0%	34%	23%
05169	GBHS PRINCE ROAD QUETTA	2	100%	18	0%	79%	86%	100%	86%	76%	97%	74%	0%	61%	0%	17%	11%
05194	GBHS AKHUN ZADA KUCHLAK	6	100%	23	22%	83%	82%	100%	28%	32%	100%	40%	0%	26%	0%	26%	13%
05199	GBHS SIMLI	14	100%	117	3%	83%	83%	92%	50%	53%	94%	34%	36%	1%	0%	52%	10%
05210	GGHS HAJI NIAZ SHAMSHOAZI PASHTOON BAGH	7	100%	16	69%	69%	87%	N/A	14%	21%	87%	57%	0%	0%	0%	13%	13%
09012	GBHS SATELLITE TOWN QUETTA	10	100%	39	31%	79%	87%	92%	30%	26%	89%	68%	0%	8%	0%	23%	15%
09260	GGHS KILLI JAHLUM KARAIZ	2	100%	9	0%	70%	79%	91%	59%	83%	95%	60%	0%	11%	0%	33%	22%
09261	GGHS AMIN ABAD BREWERY QTA	5	100%	20	0%	72%	84%	100%	75%	90%	97%	84%	0%	60%	0%	55%	25%
09620	GGHS JINNAH TOWN SAMANGLI	11	100%	34	21%	77%	81%	83%	35%	55%	91%	65%	0%	32%	0%	44%	26%
09623	GGHS GOR COLONY	2	100%	7	29%	81%	78%	96%	49%	49%	100%	100%	0%	71%	0%	0%	14%
10302	GBHS MOTI RAM ROAD	3	100%	21	14%	82%	78%	87%	70%	58%	99%	85%	0%	29%	0%	38%	14%
10315	GGHS RINDGARH TAKHTANI	2	100%	5	0%	74%	80%	81%	80%	99%	100%	44%	0%	40%	0%	60%	40%
11226	GGHS KHANY ZAI AGHBARG	1	100%	3	0%	54%	64%	67%	57%	57%	96%	48%	N/A	0%	0%	N/A	100%
12676	GBHS SARDAR ISHAQ KHAN	3	100%	22	5%	93%	85%	89%	84%	74%	87%	82%	0%	41%	0%	27%	14%
14088	GGHS PAIND KHAN NO.2	7	100%	20	55%	72%	85%	N/A	22%	30%	96%	94%	0%	30%	0%	10%	15%
14468	GGHS AHMED QUARY ROAD	2	100%	8	0%	50%	87%	84%	57%	72%	84%	86%	0%	75%	0%	38%	25%
15247	GGHS KHAN SHAHEED PA	6	100%	24	0%	74%	78%	94%	57%	76%	79%	76%	0%	54%	0%	46%	25%

Note: The findings of RTSM visits represent the performance of schools as noticed at the time of visit and may not be representative of routine school functions.

- Unique identification number of cluster head schools in ascending order
- Shows the percentage of times out of total monitoring visits on which schools were found closed.
- Student/teaching staff and non-teaching staff attendance value is a sum of the total number of students/staff monitored on all visits.
- Percentage of school facilities is a composite average of availability of safe drinking water, chairs and table for teachers, mats and desks for students and blackboard and chalks in classes.
- Percentage of teaching and learning environment in school is a composite average of students having textbook, availability of syllabus in class and number of students wearing uniform.
- Shows usability of available rooms to carry out teaching and learning processes and usability of available toilets to fulfill sanitation and safe hygiene needs of students. The monitoring tools employed here are based on observation of the monitor and interview with school/class teacher(s).
- Refers to the number of teachers in cluster and feeder schools who are participating in Continuous Professional Development (CPD)* training.
- Refers to the participation of staff of feeder schools in procurement committee meetings convened by cluster head schools based on information provided by feeder schools.
- Refers to the percentage of schools in cluster visited by Education Field Officials (EFO)* during the reporting period.



Download the Electronic copy of **STATIC BOOKLET** JUNE 2019

click the Download button



Watch a video documentary on the Balochistan Real Time School Monitoring System

click the play button

QUETTA

CLUSTER REPORT CARD

Cluster Schools and Monitoring Visits			Cluster Operations			Cluster Attendance			Cluster Environment					Cluster Participation				
01	02	03	04	05	06	07	08	09	10	11	12	13	14	15	16	17	18	
Cluster BEMIS No	Cluster Name	Total Schools	Schools in Cluster Monitored (%)	Monitoring Visits (#)	Times Schools Closed on visit (%)	Student (%)	Teaching Staff (%)	Non Teaching Staff (%)	Facilities (%)	Teaching and Learning (%)	Useable Rooms (%)	Useable Toilets (%)	Schools without Toilets (%)	Child Clubs Formed(%)	Teachers enrolled in CPD* (%)	Feeder Schools in Procurement Meetings (%)	Schools visited by ETOs* (%)	
03334	GGHS KILLI ALAM KHAN	★ ★	11	100%	48	0%	75%	74%	83%	54%	85%	89%	91%	0%	52%	0%	67%	23%
03336	GGHSS KILLI SHAIKHAN QUETTA	★ ★	3	100%	13	8%	69%	88%	89%	74%	85%	89%	82%	0%	38%	8%	54%	23%
03338	GGHS SHALDARA ALLAH DINNA ROAD	★	2	100%	6	33%	67%	89%	95%	45%	38%	93%	100%	0%	50%	0%	67%	17%
03339	GGHS ISLAM ABAD	★ ★ ★	2	100%	9	0%	76%	87%	97%	85%	97%	99%	99%	0%	56%	33%	33%	22%
03342	GGHS CANTT QUETTA	★ ★ ★	1	100%	2	0%	88%	95%	88%	93%	96%	98%	67%	N/A	100%	0%	N/A	100%
03345	GGHS POSTAL COLONY QUETTA	★ ★ ★	1	100%	3	0%	82%	84%	100%	91%	100%	100%	88%	N/A	100%	0%	N/A	100%
03353	GGHS KILLI ABDUL ALI		16	100%	61	11%	82%	72%	79%	43%	70%	83%	56%	0%	18%	0%	62%	20%
03355	GGHS P.A.F SAMUNGLI		12	100%	44	16%	72%	78%	71%	39%	55%	89%	55%	8%	18%	0%	59%	20%
03361	GGHS KAICHI BAIG		19	100%	81	19%	68%	83%	84%	41%	61%	93%	64%	0%	16%	0%	53%	17%
03369	GGHS APWA QUETTA	★ ★ ★	2	100%	10	0%	72%	87%	93%	94%	84%	100%	90%	0%	90%	20%	50%	20%
03371	GGHS NAWAB MUHAMMAD AKBAR BUGTI		20	100%	69	28%	65%	69%	79%	37%	49%	90%	52%	5%	14%	0%	43%	22%
03372	GGHS STAFF COLLEGE QUETTA	★ ★	1	100%	2	0%	84%	48%	77%	100%	100%	50%	73%	N/A	100%	0%	N/A	0%
03376	GGHS CHASMA KHUDDO	★ ★ ★	4	100%	14	0%	74%	84%	86%	63%	95%	100%	97%	25%	43%	0%	21%	29%
03378	GGHS SIRKI KALAN	★	1	100%	4	25%	57%	86%	100%	57%	55%	97%	65%	N/A	100%	0%	N/A	100%
03380	GGHS KILLI UMAR KHAN	★ ★ ★	1	100%	5	0%	85%	84%	82%	89%	95%	100%	100%	N/A	100%	20%	N/A	100%
03382	GGHS POLICE LINE	★ ★ ★	1	100%	3	0%	83%	91%	90%	100%	100%	100%	93%	N/A	100%	0%	N/A	100%
03389	GGHS PAK	★ ★	2	100%	9	0%	71%	82%	80%	80%	96%	87%	69%	0%	44%	11%	22%	22%
03399	GGHS SHAFIQUE AKS	★ ★ ★	1	100%	5	0%	85%	89%	79%	94%	100%	91%	74%	N/A	100%	0%	N/A	100%
03400	GGHS SARDAR ESSA KHAN	★ ★ ★	1	100%	4	0%	90%	88%	78%	100%	98%	94%	100%	N/A	100%	0%	N/A	100%
03404	GGHS CHASHMA ACHOOZAI	★	8	100%	21	43%	84%	88%	N/A	33%	39%	71%	93%	0%	33%	0%	29%	24%
03406	GGHSS RAILWAY COLONY	★ ★ ★	1	100%	4	0%	82%	89%	82%	100%	99%	83%	85%	N/A	100%	0%	N/A	100%
03408	GGHSS IRRIGATION COLONEY QTA	★ ★	8	100%	29	7%	73%	81%	98%	56%	71%	92%	75%	0%	34%	0%	69%	24%
03415	GGHS KILLI GUL MUHAMMED	★ ★ ★	1	100%	4	0%	73%	77%	91%	75%	100%	97%	89%	N/A	100%	0%	N/A	100%
03416	GGHS MANOO JAN ROAD HUDDA QTA	★	5	100%	20	5%	51%	78%	96%	77%	87%	99%	91%	0%	25%	20%	60%	25%
03419	GGHS C.G.S COLONY QUETTA	★ ★	2	100%	7	14%	77%	84%	100%	62%	83%	85%	85%	0%	71%	0%	14%	29%
03420	GGHS KILLI ISMAIL		2	100%	7	43%	73%	80%	N/A	23%	39%	79%	100%	0%	29%	0%	43%	14%
03427	GGHS HAZARA TOWN	★ ★ ★	3	100%	10	0%	79%	89%	83%	76%	92%	100%	88%	0%	80%	0%	50%	30%
03430	GGMODHS MISSION ROAD QUETTA	★ ★ ★	2	100%	11	0%	78%	86%	83%	90%	98%	96%	77%	0%	100%	18%	55%	18%
03431	GGHS NAWA KILLI	★	9	100%	33	6%	80%	83%	74%	59%	84%	99%	85%	0%	88%	12%	76%	24%
03437	GGHS KILLI POD GALI SABZAL	★ ★	5	100%	16	25%	70%	75%	100%	40%	58%	94%	97%	0%	75%	0%	44%	19%
03441	GGHS MALIK YAHYA QILLAH KASI	★ ★ ★	2	100%	9	0%	65%	91%	85%	77%	85%	77%	68%	0%	89%	11%	56%	22%
03451	GGHSS HAJI GHAIBI ROAD	★ ★ ★	2	100%	6	0%	79%	91%	89%	86%	89%	95%	98%	0%	67%	17%	67%	33%
03453	GGHS SATELITE TOWN	★ ★	4	100%	13	8%	78%	87%	100%	58%	76%	91%	73%	0%	62%	0%	38%	31%
03457	GGHS WAHDAT COLONY	★ ★ ★	2	100%	6	0%	75%	84%	89%	67%	91%	68%	98%	0%	67%	0%	33%	33%
03462	GGHS KILLI KAMALOO SARIAB		4	100%	17	12%	71%	76%	86%	48%	62%	100%	28%	0%	18%	0%	35%	24%
03463	GGHS SHAH NOOR KACH	★	13	100%	40	3%	76%	72%	81%	49%	83%	84%	77%	15%	40%	15%	40%	33%
03464	GGHS KILLI KATEER KUCHLAK		15	100%	49	8%	82%	76%	76%	46%	79%	84%	68%	7%	27%	2%	65%	20%
03467	GGHS SARDAR KARAIZ	★	7	100%	28	4%	65%	71%	84%	58%	85%	94%	61%	0%	57%	0%	50%	25%
03472	GGHS MOMIN ABAD	★ ★ ★	2	100%	8	0%	87%	88%	97%	95%	88%	96%	100%	0%	100%	50%	63%	25%
03480	GGHS SHAHEED GUL HASSAN KASI	★ ★ ★	3	100%	12	0%	72%	91%	95%	93%	87%	85%	92%	0%	67%	0%	75%	25%
03481	GGHS LADY SANDEMAN	★ ★ ★	2	100%	9	0%	64%	88%	96%	100%	87%	81%	75%	0%	33%	0%	44%	22%
04782	GBHS CENTRAL HUDA	★	16	100%	97	13%	75%	89%	93%	46%	35%	88%	69%	0%	10%	0%	44%	10%
04783	GBHS WAHDAT COLONY QUETTA	★ ★ ★	1	100%	9	0%	77%	89%	92%	89%	84%	90%	63%	N/A	100%	0%	N/A	100%
04784	GBHS KOTWAL QUETTA	★ ★	8	100%	58	2%	85%	80%	82%	68%	65%	99%	70%	0%	14%	0%	45%	14%
04785	GBHS KILLI GUL MUHAMMAD	★	19	100%	118	8%	88%	81%	84%	39%	40%	91%	65%	11%	30%	1%	42%	11%
04787	GBHS KILLI ISMAIL	★	13	100%	96	5%	80%	85%	94%	58%	48%	89%	67%	0%	8%	1%	58%	13%
04811	GBHS HAJI NIAZ MUHAMMAD PB	★	4	100%	16	31%	80%	82%	100%	32%	29%	100%	58%	25%	0%	0%	13%	13%
04855	GBHS KILLI JEO	★ ★ ★	1	100%	8	0%	79%	83%	95%	93%	77%	90%	86%	N/A	100%	13%	N/A	100%
04898	GBHS HANNA		24	100%	152	5%	75%	69%	89%	41%	46%	84%	33%	46%	1%	0%	48%	15%
04901	GBHSS SANDAMAN	★ ★ ★	2	100%	15	0%	77%	95%	90%	87%	80%	97%	88%	0%	67%	0%	27%	13%
04903	GBHS SPECIAL	★ ★ ★	5	100%	37	0%	79%	90%	92%	93%	79%	94%	79%	0%	73%	0%	59%	14%
04904	GBMODHS TECHNICAL QUETTA	★ ★ ★	1	100%	6	0%	83%	92%	97%	98%	100%	100%	100%	N/A	100%	0%	N/A	100%
04906	GBHS KILLI KHALLI	★	17	100%	134	10%	75%	86%	92%	45%	47%	89%	33%	0%	15%	0%	33%	11%
04907	GBHS KAICHI BAIG SARIAB	★	22	100%	133	11%	76%	85%	89%	42%	42%	81%	52%	5%	11%	0%	55%	14%
04908	GBHS NAWAB MUHAMMAD AKBAR BUGTI		35	100%	208	13%	73%	80%	84%	38%	40%	88%	53%	14%	7%	0%	48%	13%
04914	GBMODHS YAZDAN KHAN	★ ★ ★	3	100%	23	0%	88%	91%	94%	99%	91%	81%	89%	0%	30%	0%	30%	13%
04932	GBHS MALIK JAN MOHAMMED	★ ★ ★	5	100%	36	0%	74%	88%	85%	79%	73%	99%	77%	0%	22%	0%	56%	14%
04933	GBHS PASHTOON ABAD	★ ★	8	100%	57	11%	88%	83%	89%	61%	56%	94%	74%	13%	16%	0%	54%	12%
04934	GBHS HAZARA SOCIETY	★ ★ ★	2	100%	15	0%	88%	90%	82%	94%	75%	90%	93%	0%	33%	7%	20%	13%
04935	GBHS COMPREHANSIVE	★ ★ ★	1	100%	11	0%	84%	90%	83%	100%	85%	99%	90%	N/A	100%	9%	N/A	100%
04961	GBHS SHAFIQUE AHMED KHAN	★ ★ ★	2	100%	18	0%	84%	87%	98%	90%	82%	92%	66%	0%	39%	0%	50%	11%
04971	GBHS LOHER KARAIZ	★ ★	16	100%	120	3%	79%	85%	94%	59%	57%	95%	83%	6%	18%	0%	61%	12%
04983	GBHS KHAROT ABAD NO.1	★	31	100%	105	39%	86%	78%	86%	18%	18%	84%	29%	23%	0%	0%	27%	11%
05024	GBHS SARAGHARGI	★	7	100%	49	16%	82%	82%	100%	46%	44%	92%	26%	14%	2%	0%	27%	14%
05099	GBHS T.B SANITORIUM	★	5	100%	45	2%	81%	86%	89%	49%	58%	98%	44%	60%	4%	0%	53%	11%
05104	GBHS SABZAL ROAD	★	7	100%	40	13%	82%	88%	89%	42%	42%	93%	45%	0%	18%	0%	38%	15%
05113	GBHS BARO ZAI AUGBERG	★	22	100%	142	11%	86%	76%	90%	48%	50%	89%	40%	27%	5%	0%	56%	14%
05115	GBHS HAZARA TOWN QUETTA	★	4	100%	27	15%	78%	90%	86%	41%	46%	93%	59%	0%	15%	0%	22%	11%