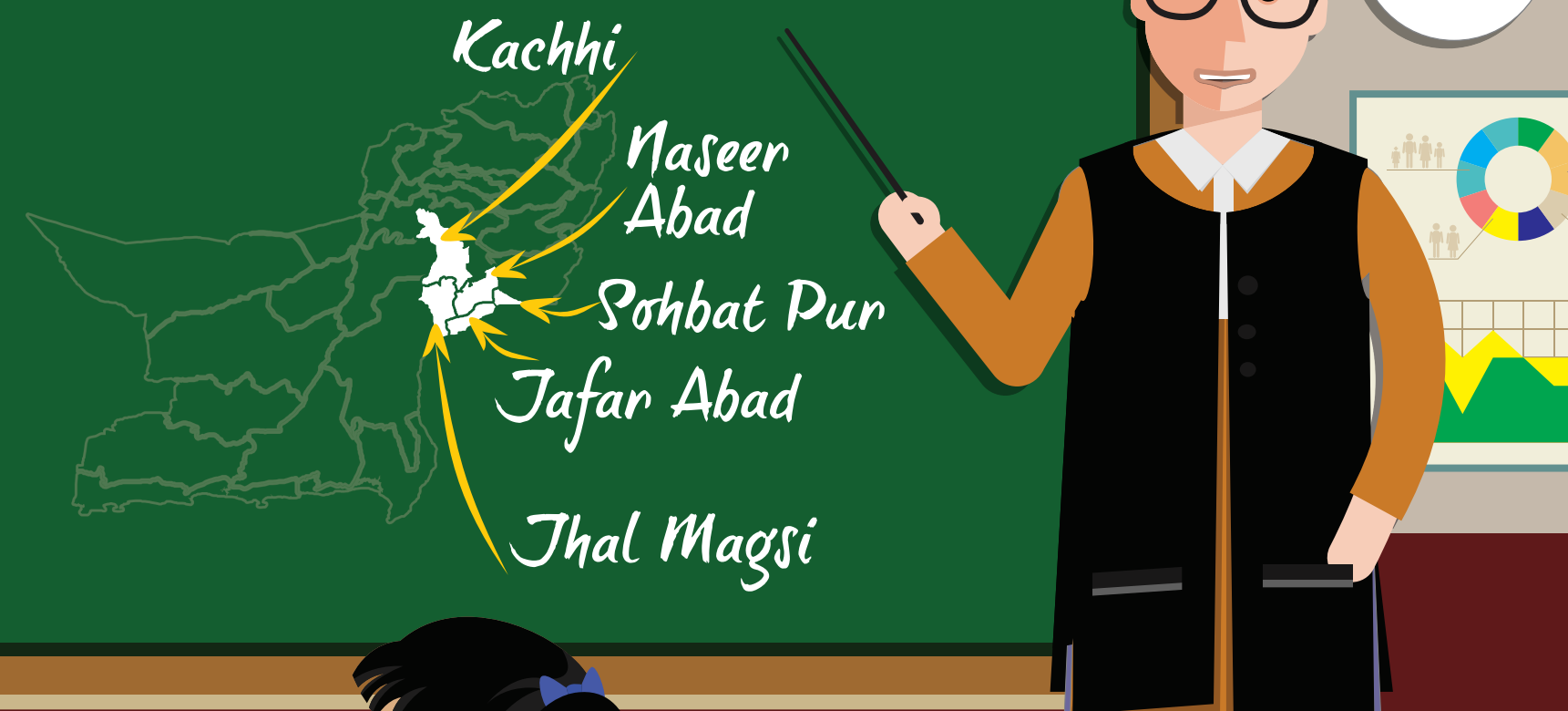


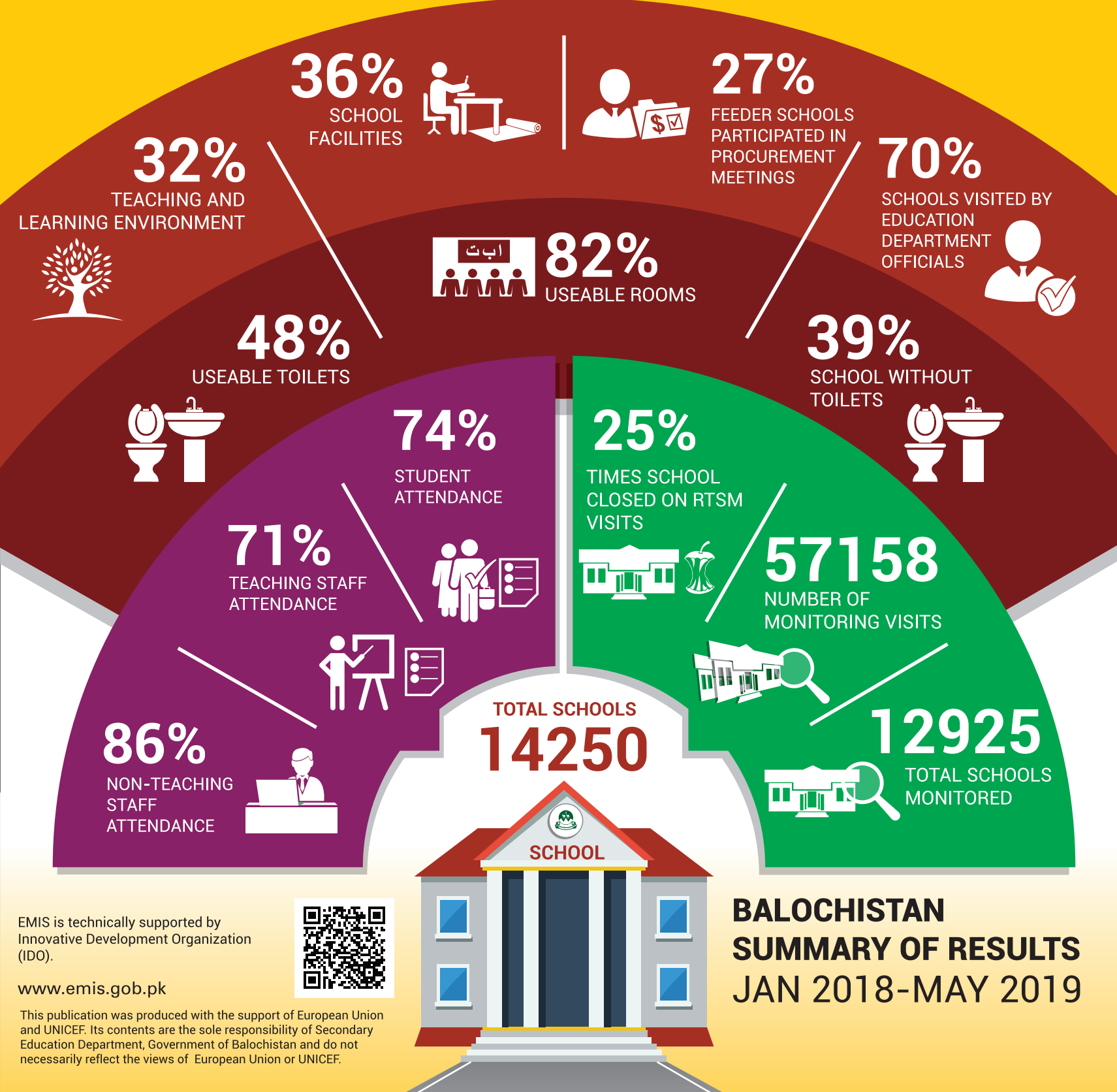
NASEER ABAD DIVISION



PERFORMANCE MANAGEMENT CELL (PMC)
Policy, Planning and Implementation Unit (PIU)
Secondary Education Department, Balochistan

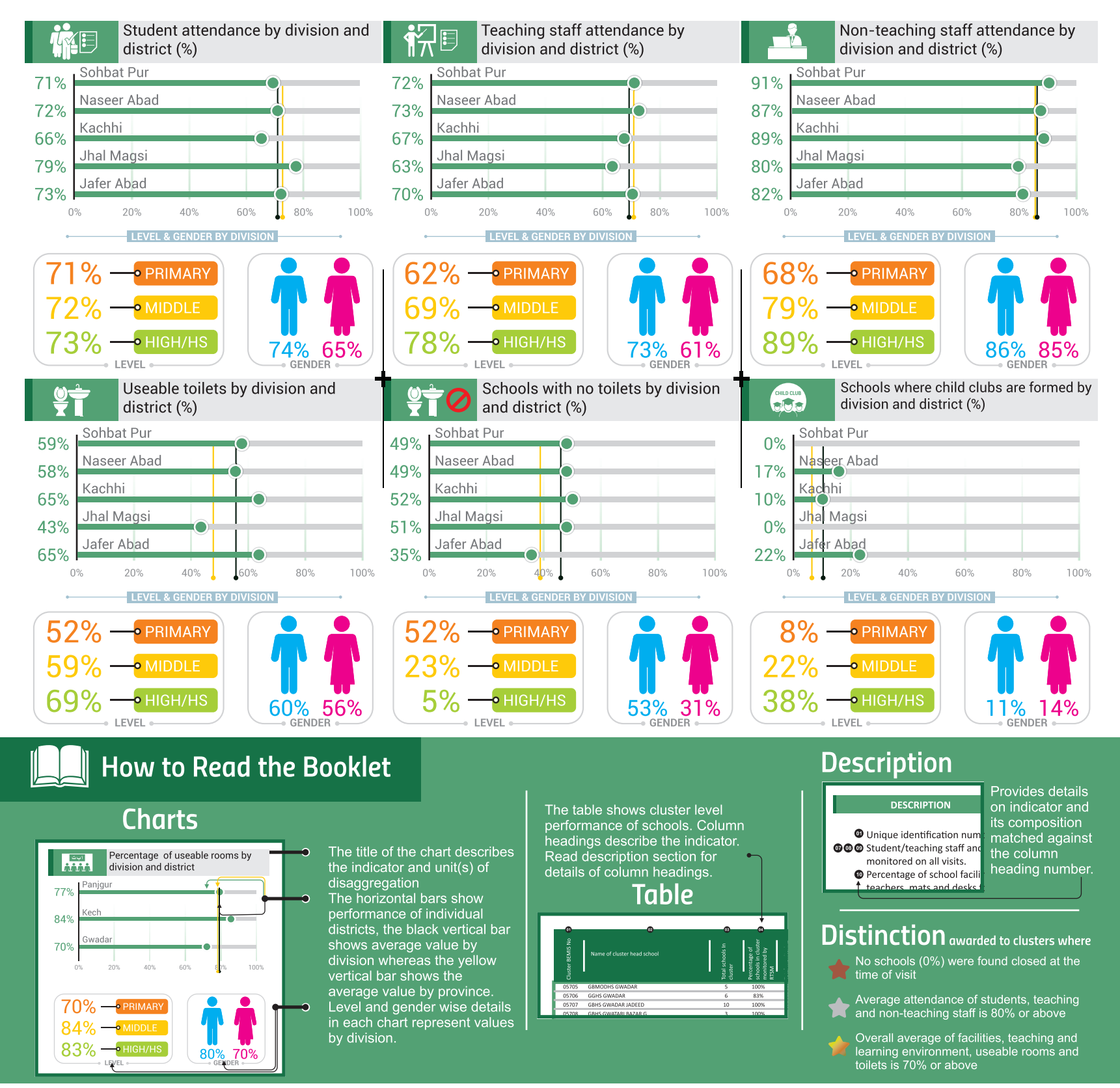
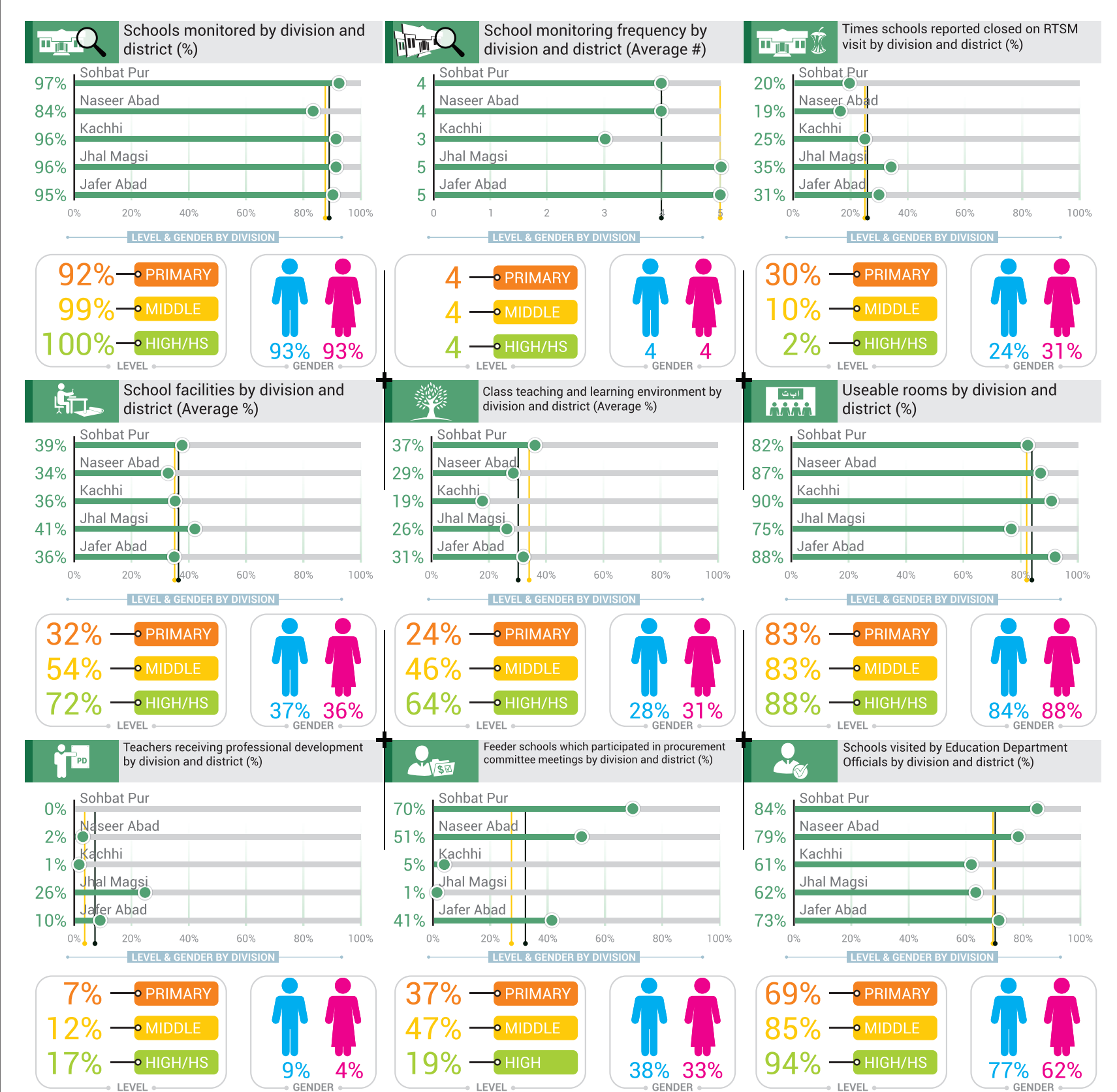
BALUCHISTAN REAL TIME SCHOOL MONITORING SYSTEM DIVISIONAL REPORT CARD

Based on findings of 57,158 monitoring visits to 12,925 schools from Jan 2018 to May 2019 in Balochistan



BALUCHISTAN SUMMARY OF RESULTS JAN 2018-MAY 2019

EMIS is technically supported by Innovative Development Organization (IDO).
www.emis.gob.pk



How to Read the Booklet

Charts
The title of the chart describes the indicator and unit(s) of disaggregation. The horizontal bars show performance of individual districts, the black vertical bar shows average value by division whereas the yellow vertical bar shows the average value by province. Level and gender wise details in each chart represent values by division.

Table
The table shows cluster level performance of schools. Column headings describe the indicator. Read description section for details of column headings.

Description
Provides details on indicator and its composition matched against the column heading number.

Distinction
awarded to clusters where:
 ☆ No schools (0%) were found closed at the time of visit.
 ★ Average attendance of students, teaching and non-teaching staff is 80% or above.
 ☆ Overall average of facilities, teaching and learning environment, useable rooms and toilets is 70% or above.

Cluster Schools and Monitoring Visits			Cluster Operations			Cluster Attendance		Cluster Environment					Cluster Participation				
Cluster BE/MIS No	Cluster Name	Total Schools	Schools in Cluster Monitored (%)	Monitoring Visits (#)	Times Schools Closed on visit (%)	Student (%)	Teaching Staff (%)	Non Teaching Staff (%)	Facilities (%)	Teaching and Learning (%)	Useable Rooms (%)	Useable Toilets (%)	Schools without Toilets (%)	Child Clubs Formed (%)	Teachers enrolled in CPD* (%)	Feeder Schools in Procurement Meetings (%)	Schools visited by EFOs* (%)
07450	GBHS MIR GUL JATAK	12	75%	45	20%	63%	67%	71%	43%	28%	73%	52%	44%	31%	9%	38%	18%
07451	GBHS SONA K GOHT GHULAM SARBARH	11	100%	67	12%	76%	82%	100%	42%	36%	87%	39%	55%	13%	3%	57%	13%
07453	GBHS NOOR MUHAMMAD MENGAL	10	100%	54	30%	71%	81%	100%	34%	22%	87%	82%	60%	17%	4%	56%	17%
07461	GBHS BEHRAM KHAN BULADI	9	89%	42	45%	82%	63%	85%	28%	16%	90%	92%	38%	19%	2%	26%	12%
07473	GBMODHS DERA MURAD JAMALI	12	100%	83	8%	78%	87%	84%	49%	42%	98%	75%	67%	19%	2%	63%	13%
07487	GGHSS DERA MURAD JAMALI	32	72%	54	9%	66%	71%	98%	32%	40%	80%	52%	30%	22%	0%	41%	33%
07488	GBHS SPECIAL DERA MURAD JAMALI	24	83%	148	16%	73%	80%	82%	42%	38%	96%	56%	60%	8%	1%	59%	13%
07489	GBHS SHORI DATA	23	61%	68	13%	76%	67%	79%	35%	19%	94%	71%	57%	12%	0%	44%	18%
07506	GBHS M RAHIM CHAK NO. 16	12	83%	61	18%	76%	79%	92%	37%	33%	64%	52%	30%	21%	3%	52%	15%
07512	GBHS FATEH PUR	24	63%	52	21%	78%	74%	100%	27%	16%	91%	68%	47%	23%	0%	35%	21%
07519	GBHS TAJ MUHAMMAD LEHRI	19	89%	81	21%	81%	72%	100%	39%	22%	84%	69%	59%	25%	2%	56%	20%
07541	GBHS TAMBO	19	89%	73	18%	64%	72%	75%	36%	12%	88%	90%	71%	4%	0%	59%	22%
07542	GGHS FATEH PUR TAMBO	61	74%	87	31%	66%	57%	90%	24%	19%	82%	58%	29%	13%	1%	21%	23%
07555	GBHS SYED MEHMOOD SHAH	18	100%	99	17%	77%	70%	90%	42%	35%	98%	60%	61%	16%	1%	59%	15%
07559	GBHS IMDAD HUSSAIN KHOSA	19	95%	82	18%	72%	70%	100%	34%	29%	87%	73%	61%	18%	2%	61%	20%
07580	GBHS AZIZ ABAD	20	85%	73	37%	65%	70%	40%	24%	9%	78%	33%	53%	3%	0%	34%	18%
07581	GBHS MIR WAH	18	61%	47	34%	70%	69%	60%	23%	13%	84%	8%	64%	0%	0%	32%	17%
07593	GBHS KOTE MENGAL	14	93%	103	9%	78%	79%	100%	44%	39%	98%	64%	77%	7%	2%	70%	13%
07598	GBHS SHAFI MUHAMMAD UMRANI	11	91%	65	11%	79%	83%	100%	45%	39%	92%	71%	60%	25%	8%	62%	15%
07602	GBHS ABDUL MAJEED LEHRI	16	100%	105	18%	71%	64%	77%	42%	33%	96%	67%	75%	10%	2%	62%	15%
07613	GBHS SHAHEED SOHAIL ASLAM (RC)	21	95%	149	15%	78%	81%	91%	37%	34%	81%	80%	50%	13%	3%	68%	13%
07615	GBHS CHATTAR	16	94%	34	21%	62%	67%	85%	32%	26%	88%	82%	53%	35%	3%	38%	35%
07629	GBHS DOULAT GHARI	9	100%	36	6%	70%	76%	82%	47%	30%	98%	83%	67%	14%	6%	69%	25%
07630	GBHS SARDAR ABDUL HAMEED KHOSA	8	75%	36	3%	77%	78%	100%	49%	47%	84%	100%	33%	25%	3%	61%	17%
07640	GBHS PHALAGI	14	86%	36	11%	72%	65%	80%	32%	21%	91%	80%	75%	31%	8%	25%	31%
08820	GGHS ABDUL WAHAB SOOMRA	32	88%	69	16%	69%	74%	72%	31%	39%	89%	55%	29%	35%	4%	42%	25%
09433	GGHS JARA KHAN JOYA	51	90%	96	31%	63%	67%	80%	25%	35%	90%	42%	24%	31%	2%	20%	30%

Note: The findings of RTSM visits represent the performance of schools as noticed at the time of visit and may not be representative of routine school functions.

- ★ Unique identification number of cluster head schools in ascending order
- ★ Shows the percentage of times out of total monitoring visits on which schools were found closed.
- ★ Student/teaching staff and non teaching staff attendance value is a sum of the total number of students/staff monitored on all visits.
- ★ Percentage of school facilities is a composite average of availability of safe drinking water, chairs and table for teachers, mats and desks for students and blackboard and chalks in classes.
- ★ Percentage of teaching and learning environment in school is a composite average of students having textbook, availability of syllabus in class and number of students wearing uniform.
- ★ Shows usability of available rooms to carry out teaching and learning processes and usability of available toilets to fulfill sanitation and safe hygiene needs of students. The monitoring tools employed here are based on observation of the monitor and interview with school/class teacher(s)
- ★ Refers to the number of teachers in cluster and feeder schools who are participating in Continuous Professional Development (CPD)* training.
- ★ Refers to the participation of staff of feeder schools in procurement committee meetings convened by cluster head schools based on information provided by feeder schools.
- ★ Refers to the percentage of schools in cluster visited by Education Field Officials (EFO)* during the reporting period.

Naseer Abad



Download the Electronic copy of **STATIC BOOKLET** JUNE 2019
click the Download button



Watch a video documentary on the Balochistan Real Time School Monitoring System
click the play button

CLUSTER REPORT CARD

Cluster Schools and Monitoring Visits			Cluster Operations			Cluster Attendance			Cluster Environment				Cluster Participation				
01	02	03	04	05	06	07	08	09	10	11	12	13	14	15	16	17	18
Cluster BEWIS No	Cluster Name	Total Schools	Schools in Cluster Monitored (%)	Monitoring Visits (#)	Times Schools Closed on visit (n)	Student (%)	Teaching Staff (%)	Non Teaching Staff (%)	Facilities (%)	Teaching and Learning (%)	Useable Rooms (%)	Usable Toilets (%)	Schools without Toilets (%)	Child Clubs Formed(%)	Teachers enrolled in CPD* (%)	Feeder Schools in Procurement Meetings (%)	Schools visited by EFOs* (%)
05303	GGHS ROJHAN JAMALI	35	100%	153	24%	72%	65%	90%	47%	41%	87%	70%	11%	35%	25%	44%	17%
05305	GBMODHS DERA ALLAH YAR	21	100%	109	13%	74%	88%	97%	49%	40%	96%	77%	57%	25%	26%	43%	19%
05306	GGHS DERA ALLAH YAR	36	94%	166	18%	61%	75%	93%	50%	45%	94%	80%	21%	34%	25%	41%	17%
05307	GBHS ROJHAN JAMALI	18	94%	89	19%	76%	74%	95%	47%	41%	80%	49%	29%	24%	38%	47%	18%
05362	GBHS CATTLE FARM	19	100%	86	30%	79%	46%	70%	34%	29%	95%	76%	58%	16%	3%	48%	14%
05399	GBHS HAFIZ ABAD JAMALI	19	89%	92	38%	73%	62%	80%	31%	26%	91%	86%	59%	12%	11%	30%	14%
05407	GBHS ISMAIL CHILGARI	19	89%	48	54%	77%	58%	33%	22%	23%	69%	38%	41%	6%	6%	31%	19%
05408	GBHS SOBDAR JAMALI	19	95%	68	56%	68%	33%	90%	22%	15%	90%	66%	39%	10%	3%	25%	12%
05409	GGHS USTA MUHAMMAD	22	100%	115	26%	75%	79%	97%	43%	42%	95%	73%	27%	27%	1%	48%	12%
05410	GGHS GANDAKHA	20	100%	96	48%	66%	45%	63%	24%	23%	87%	49%	25%	4%	1%	28%	14%
05412	GGHS RUSTAM KHAN JAMALI	18	100%	98	28%	70%	64%	96%	48%	48%	93%	68%	22%	40%	5%	42%	13%
05419	GBHSS GANDAKHA	25	100%	109	28%	71%	65%	83%	30%	27%	76%	22%	60%	5%	0%	43%	19%
05420	GBHSS USTA MUHAMMAD	19	89%	93	27%	79%	83%	92%	38%	34%	95%	61%	24%	39%	2%	48%	14%
05421	GBHS HAQ BAHO USTA MUHAMMAD	19	84%	90	26%	83%	74%	93%	37%	35%	78%	64%	31%	37%	0%	59%	13%
05422	GBHS NUSHKI JADEED	23	100%	81	63%	81%	59%	66%	11%	9%	71%	17%	30%	1%	0%	25%	12%
05477	GBHS SHAN PALAL	22	100%	100	29%	73%	69%	89%	24%	21%	79%	75%	77%	9%	0%	52%	17%
05510	GBHS JAFFAR ABAD USTA MUHAMMAD	19	89%	77	36%	82%	69%	100%	31%	25%	96%	91%	53%	13%	1%	45%	17%
05514	GBHS GHARIB ABAD	17	88%	89	28%	75%	72%	70%	39%	37%	84%	39%	33%	18%	1%	56%	16%
05520	GBHS AHMED ABAD	23	100%	100	62%	62%	40%	42%	14%	11%	92%	57%	22%	1%	1%	22%	8%
05521	GBHS MUHAMMAD HASSAN JAMALI	18	100%	61	48%	70%	58%	72%	24%	16%	94%	83%	33%	13%	0%	33%	18%
05522	GBHS RUSTAM KHAN JAMALI	18	78%	96	35%	76%	72%	79%	35%	32%	73%	57%	29%	25%	1%	39%	13%
05530	GBHS NOOR PUR JAMALI	18	89%	95	34%	75%	68%	57%	36%	32%	93%	56%	25%	18%	0%	46%	13%
05539	GBHS KHAN PUR JAMALI	18	78%	77	18%	78%	74%	76%	42%	43%	91%	48%	21%	29%	0%	62%	17%
05669	GBHS SARDAR SOHBAT KHAN GOLA	19	84%	81	10%	76%	86%	80%	61%	47%	89%	65%	31%	46%	49%	38%	19%
05670	GBHS BHATTI MUHALLAH D. ALLAH YAR	20	100%	91	5%	74%	86%	94%	56%	41%	84%	81%	40%	32%	25%	38%	21%
09876	GGHS CHOWKI JAMALI NO.1	18	100%	79	62%	58%	41%	93%	18%	17%	81%	56%	17%	13%	0%	27%	10%
11952	GGHS ABDUL AZIZ BROHI	17	94%	85	22%	69%	67%	83%	42%	38%	98%	59%	25%	32%	0%	44%	14%
13297	GBHS GHULAM RASOOL LEHRI	19	100%	98	19%	69%	81%	100%	40%	32%	92%	90%	58%	24%	24%	28%	16%
07269	GBHSS GANDAWAH	33	97%	119	33%	78%	70%	78%	25%	21%	48%	15%	63%	0%	35%	1%	14%
07270	GGHS GANDAWAH	43	95%	242	49%	68%	48%	79%	28%	25%	84%	44%	37%	0%	1%	0%	9%
07285	GBHS KHARI	11	100%	74	47%	76%	63%	100%	27%	20%	81%	22%	82%	0%	19%	0%	12%
07299	GBHS GAJAN	18	100%	106	8%	73%	76%	80%	49%	34%	76%	9%	39%	0%	43%	1%	16%
07315	GBHS FATEH PUR	13	100%	56	34%	70%	51%	64%	30%	24%	60%	14%	54%	0%	34%	0%	18%
07316	GBHS PAACH	8	100%	47	19%	74%	69%	86%	44%	33%	84%	11%	13%	0%	26%	0%	17%
07329	GBHS KOTRA	7	100%	49	29%	82%	75%	89%	38%	30%	72%	3%	57%	0%	29%	0%	12%
07343	GBHS JHAL MAGASI	16	100%	81	37%	88%	83%	96%	49%	27%	78%	80%	81%	0%	40%	0%	7%
07344	GBHS SARANGANI	12	92%	55	24%	88%	79%	75%	59%	31%	82%	66%	73%	0%	47%	4%	11%
07345	GGHS JHAL MAGSI	22	95%	92	54%	75%	31%	64%	29%	19%	94%	65%	19%	0%	0%	0%	11%
07346	GBHS SAFARANI	9	100%	34	71%	85%	47%	67%	36%	14%	65%	57%	67%	0%	26%	0%	9%
07347	GGHS SARANGANI	15	93%	52	42%	68%	40%	92%	26%	19%	68%	7%	43%	0%	0%	0%	8%
07351	GBHS JHAL MAGSI	17	94%	97	30%	87%	75%	84%	57%	32%	83%	70%	63%	0%	46%	1%	10%
07389	GBHS MITTHO	6	100%	29	14%	86%	78%	73%	69%	41%	79%	71%	33%	0%	48%	0%	21%
07391	GBHS BARIJA	10	100%	41	41%	86%	70%	81%	54%	27%	67%	63%	60%	0%	44%	0%	17%
07410	GBHS HATHYARI	18	94%	77	26%	84%	75%	92%	57%	32%	77%	59%	71%	0%	42%	1%	13%
07417	GBHS SHAMBANI	6	83%	20	35%	85%	81%	92%	63%	28%	86%	89%	80%	0%	40%	0%	25%
07418	GGHS SHAMBANI	21	100%	82	37%	68%	48%	83%	38%	25%	74%	46%	43%	0%	0%	0%	11%
07426	GBHS KOT MAGSI (KEER THAR)	8	100%	41	10%	84%	84%	80%	72%	44%	74%	58%	50%	0%	59%	0%	20%
07427	GBHS SAKAHNI	10	80%	55	38%	86%	82%	85%	67%	31%	89%	70%	25%	0%	36%	4%	15%
07167	GGHS BHAG	9	100%	18	17%	49%	63%	97%	33%	32%	98%	19%	56%	0%	11%	6%	33%
07212	GBHS BHAG	18	94%	56	7%	71%	83%	95%	43%	49%	97%	44%	59%	0%	0%	7%	27%
07216	GBHS CHILGARI	34	97%	66	24%	77%	57%	92%	27%	20%	87%	74%	42%	0%	0%	3%	26%
07219	GBHS PAHOOR	33	97%	118	17%	70%	70%	95%	34%	31%	94%	55%	75%	6%	0%	0%	24%
07220	GBHS JALAL KHAN	23	91%	62	16%	75%	72%	63%	35%	27%	91%	60%	67%	0%	0%	2%	27%
07761	GBHS KOT MENGAL	12	100%	32	41%	72%	62%	66%	41%	14%	96%	50%	67%	0%	0%	9%	19%
07768	GBMODHS DHADER	19	100%	99	6%	55%	74%	99%	57%	22%	93%	93%	47%	14%	0%	15%	16%
07779	GGHSS DHADAR	16	100%	46	28%	68%	67%	90%	55%	24%	95%	42%	31%	17%	2%	9%	24%
07783	GBHS CHANDAR	15	93%	37	49%	72%	55%	83%	26%	5%	93%	100%	57%	0%	0%	0%	22%
07784	GBHS GHAZI	8	88%	18	17%	74%	62%	75%	42%	11%	71%	33%	71%	6%	0%	0%	22%
07798	GBHS HAJI SHEHER	16	94%	37	27%	76%	61%	85%	43%	11%	99%	74%	73%	11%	0%	3%	30%
07799	GBHS MITRHI	16	94%	33	33%	62%	67%	92%	34%	14%	93%	58%	47%	9%	0%	6%	24%
07800	GBHS GOGARAH RAISANI	15	100%	31	55%	69%	58%	100%	17%	6%	97%	69%	60%	3%	0%	3%	13%
07809	GGHS MITHRI	15	100%	32	25%	59%	54%	70%	43%	11%	81%	32%	27%	3%	9%	6%	19%
07813	GBHS MACH	23	96%	93	24%	65%	68%	96%	35%	22%	85%	83%	55%	19%	1%	2%	15%
07814	GBHS KOLPUR	2	100%	18	11%	59%	79%	96%	64%	41%	100%	80%	0%	22%	0%	11%	11%
07817	GBHS RAILWAY COLONY MACH	1	100%	9	11%	77%	72%	81%	76%	66%	100%	100%	N/A	100%	11%	N/A	100%
07826	GGHS MACH	4	75%	18	0%	65%	71%	92%	83%	62%	86%	82%	0%	61%	0%	6%	17%
07827	GGHS KOLPUR	1	100%	7	0%	53%	68%	81%	94%	49%	100%	100%	N/A	100%	14%	N/A	100%
07828	GBHS RIND ALI	14	100%	74	12%	70%	85%	95%	56%	26%	99%	89%	64%	20%	1%	9%	19%
07830	GBHS LEHRI ABAD	1	100%	2	0%	73%	87%	100%	86%	66%	100%	100%	N/A	0%	0%	N/A	100%
07831	GBHS KOLACHI NO.1	12	100%	21	43%	78%	62%	71%	42%	14%	96%	73%	33%	0%	0%	5%	38%
07836	GGHS RIND ALI	18	94%	51	14%	54%	68%	92%	53%	25%	94%	60%	24%	8%	4%	14%	25%
07838	GBHS MASHKAF	12	83%	42	0%	67%	85%	88%	64%	27%	88%	81%	50%	21%	0%	5%	17%
07890	GBHS SHORAN	31	100%	61	49%	64%	59%	100%	26%	6%	53%	25%	65%	0%	0%	2%	16%
07906	GBHS KHATTAN	27	89%	57	46%	58%	57%	91%	27%	10%	81%	100%	79%	5%	0%	2%	33%
07920	GGHS KHATAN	13	85%	30	47%	75%	49%	89%	22%	22%	100%	64%	73%	3%	0%	3%	17%
07933	GBHS BEHRI BALANARI	5	100%	9	56%	65%	61%	100%	22%	9%	100%	67%	20%	11%	0%	0%	11%
07952	GBHS SANNI	29	100%	50	68%	66%	25%	N/A	9%	2%	81%	0%	41%	0%	0%	0%	8%
08441	GGHS CHILGARI	3	100%	7	14%	83%	53%	67%	40%	25%	56%	36%	0%	0%	0%	0%	14%
09905	GGHS PAHORE IMAM BAKHSH	11	100%	28	7%	55%	70%	78%	44%	25%	95%	70%	27%	4%	0%	4%	25%
09914	GGHS KILLI SAMALANI MACH	7	100%	30	33%	58%	76%	90%	31%	15%	90%	89%	0%	27%	0%	3%	7%
05215	GBHS MULGAZAR	9	89%	13	15%	40%	47%	80%	41%	27%	48%	100%	75%	0%	0%	54%	46%
05232	GBMIDS SHAH DAD GHAJANI	12	100%	36	22%	49%	77%	N/A	38%	35%	68%	71%	67%	0%	0%	67%	33%
05235	GBHS MUHAMMAD SALAH GAJANI	9	89%	29	7%	68%	87%	N/A	44%	44%	88%	40%	75%	0%	0%	79%	28%
05243	GBHS MURID BAROHI	10	100%	39	18%	77%	77%	89%	41%	36%	100%	100%	80%	0%	0%	77%	21%
05251	GBHS MANJHI PUR	11	100%	50	12%	77%	85%	100%	47%	46%	91%	73%	27%	0%	0%	80%	20%
05258	GBHS HAIR DIN	12	100%	60	13%	71%	81%	79%	45%	40%	69%	60%	17%	0%	0%	78%	18%
05272	GBHS DEH GHARI	15	93%	60													