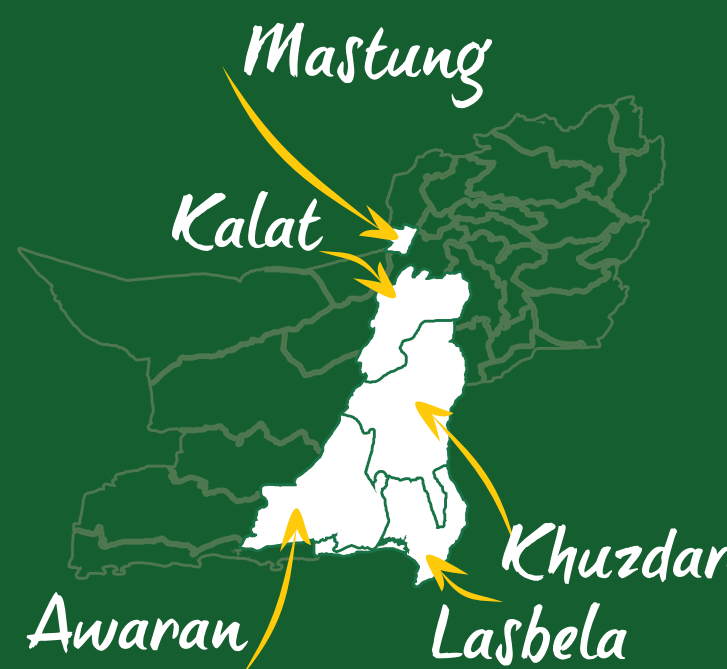


# KALAT DIVISION

Part II

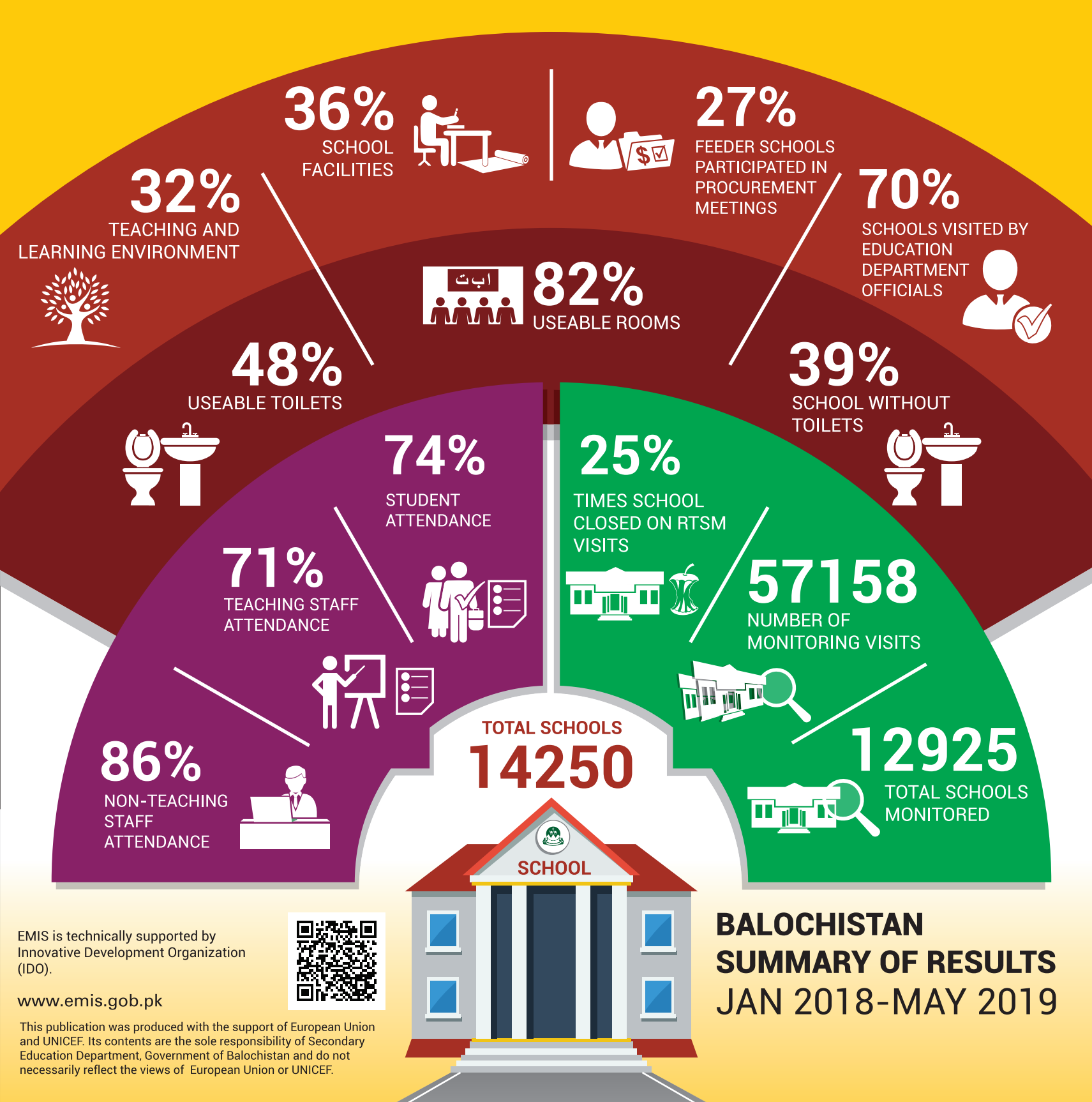


**PERFORMANCE MANAGEMENT CELL (PMC)**  
Policy, Planning and Implementation Unit (PIU)  
Secondary Education Department, Balochistan

**BALOCHISTAN REAL TIME SCHOOL MONITORING SYSTEM**

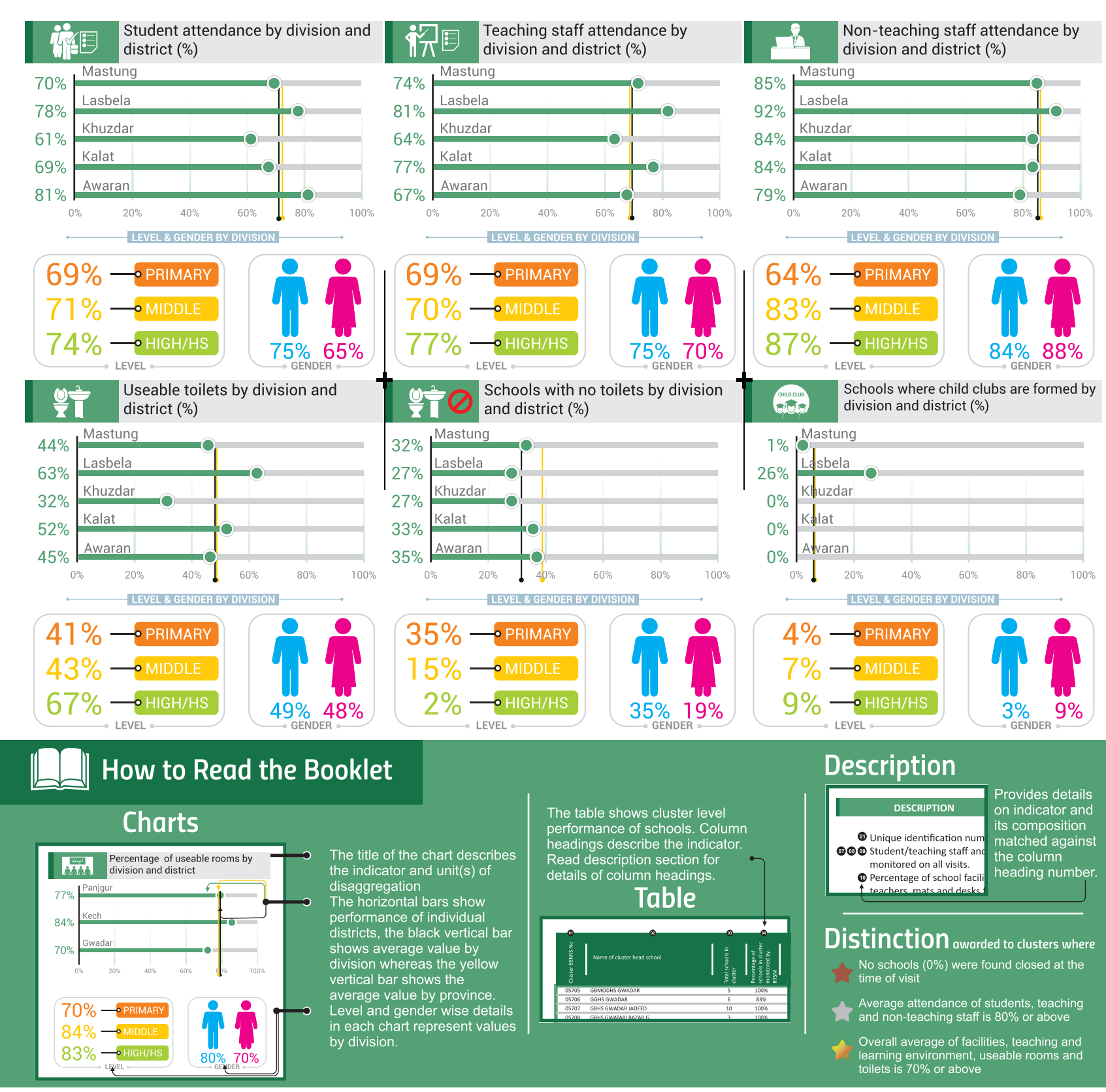
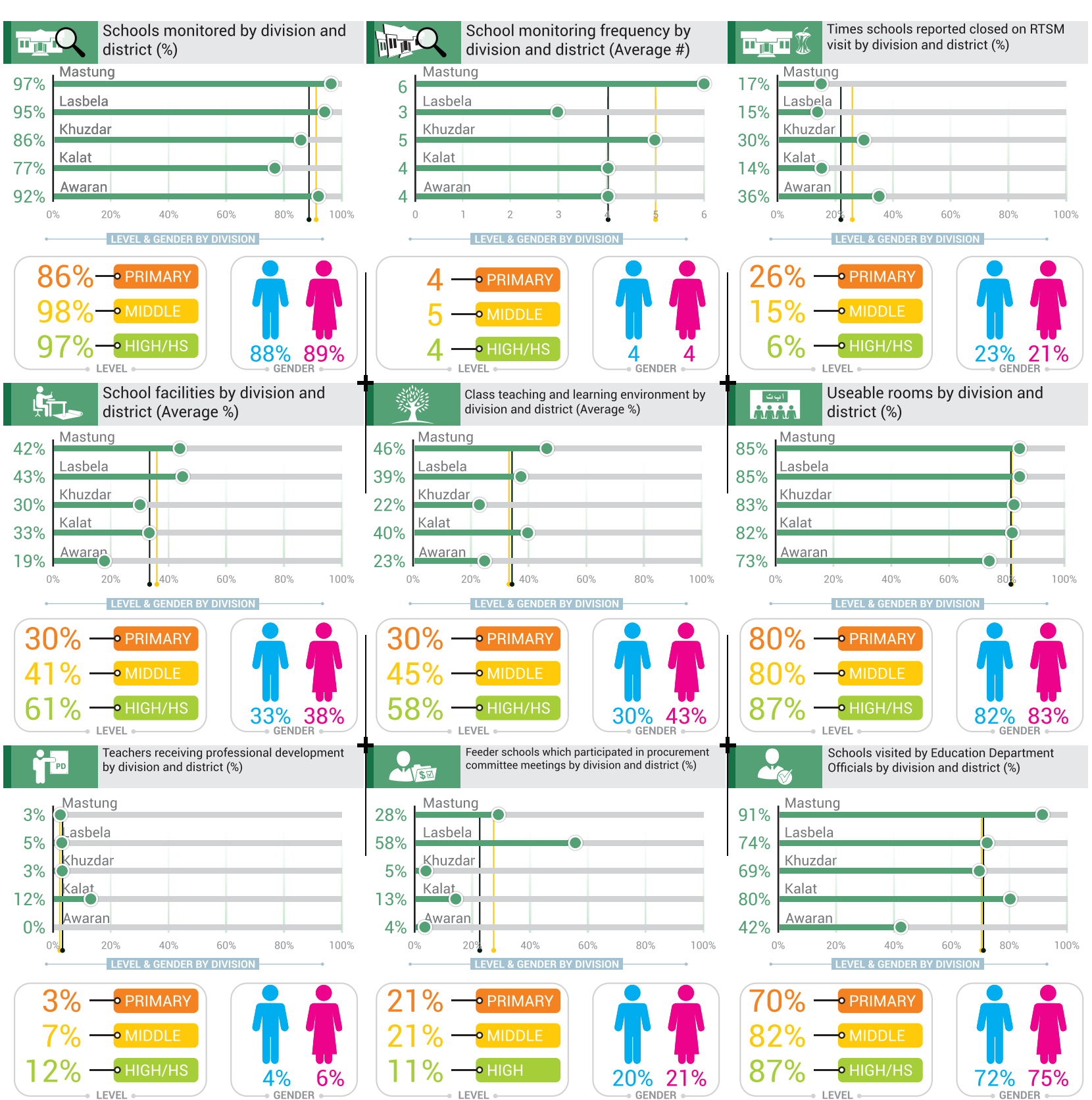
## DIVISIONAL REPORT CARD

Based on findings of 57,158 monitoring visits to 12,925 schools from Jan 2018 to May 2019 in Balochistan



### BALOCHISTAN SUMMARY OF RESULTS JAN 2018-MAY 2019

EMIS is technically supported by Innovative Development Organization (IDO).  
www.emis.gob.pk



### How to Read the Booklet

**Charts**  
The title of the chart describes the indicator and unit(s) of disaggregation. The horizontal bars show performance of individual districts, the black vertical bar shows average value by division whereas the yellow vertical bar shows the average value by province. Level and gender wise details in each chart represent values by division.

**Table**  
The table shows cluster level performance of schools. Column headings describe the indicator. Read description section for details of column headings.

**Description**  
Provides details on indicator and its composition matched against the column heading number.

**Distinction** awarded to clusters where:  
 ☆ No schools (0%) were found closed at the time of visit.  
 ★ Average attendance of students, teaching and non-teaching staff is 80% or above.  
 ☆ Overall average of facilities, teaching and learning environment, useable rooms and toilets is 70% or above.

Cluster Schools and Monitoring Visits		Cluster Operations		Cluster Attendance		Cluster Environment			Cluster Participation								
Cluster BEIMS No	Cluster Name	Total Schools	Schools in Cluster Monitored (%)	Monitoring Visits (#)	Times Schools Closed on visit (%)	Student (%)	Teaching Staff (%)	Non Teaching Staff (%)	Facilities (%)	Teaching and Learning (%)	Useable Rooms (%)	Useable Toilets (%)	Schools without Toilets (%)	Child Clubs Formed (%)	Teachers enrolled in CPD* (%)	Feeder Schools in Procurement Meetings (%)	Schools visited by EFOs* (%)
02892	GBHS BABRI	12	100%	74	30%	75%	72%	97%	35%	33%	91%	54%	50%	4%	1%	22%	16%
02893	GGHS KANAK	11	100%	45	18%	64%	68%	83%	40%	60%	77%	39%	18%	4%	0%	16%	20%
02894	GBHS SAR NOZA	11	100%	70	16%	76%	86%	86%	38%	39%	84%	44%	64%	1%	1%	29%	14%
02895	GBHS KILLI SHEIKHAN	3	67%	8	0%	74%	83%	100%	44%	52%	86%	14%	0%	0%	0%	25%	13%
02930	GBHS GHULAM PRAINZ	13	100%	93	4%	68%	82%	93%	49%	47%	83%	35%	23%	0%	1%	37%	14%
02932	GBHS SPEZAND	14	100%	85	18%	64%	64%	65%	37%	38%	88%	61%	57%	1%	4%	32%	15%
02933	GBHS ISPLINJI	19	95%	87	37%	77%	51%	64%	31%	28%	83%	39%	50%	0%	0%	14%	16%
02968	GBHS BASHAM	17	100%	95	13%	77%	83%	100%	38%	43%	82%	52%	41%	4%	3%	36%	16%
02995	GBHS PASAND KHAN	20	100%	84	8%	85%	79%	95%	45%	50%	85%	57%	50%	0%	1%	35%	23%
02997	GGHS KIRDGAP	9	100%	36	14%	79%	55%	70%	46%	62%	85%	45%	11%	0%	8%	19%	19%
02998	GBHS DRINGARH	12	100%	68	19%	80%	70%	66%	39%	37%	82%	50%	42%	0%	0%	28%	16%
02999	GBHS KIRDGAP	19	79%	59	22%	83%	71%	70%	34%	40%	75%	44%	60%	0%	2%	20%	20%
03062	GBHS KUND UMRANI	15	100%	95	31%	74%	69%	95%	34%	27%	72%	38%	47%	0%	1%	19%	15%
03072	GBHS KHAD KOOCHA	14	100%	85	25%	70%	85%	92%	37%	30%	89%	58%	50%	0%	1%	25%	15%
03092	GBHS DINAR KHAN	20	100%	114	21%	65%	70%	73%	36%	36%	90%	48%	50%	0%	2%	22%	17%
12298	GGHS KARAIZ NOOR MUHAMMAD	5	100%	28	4%	56%	73%	84%	60%	76%	82%	57%	0%	4%	18%	25%	18%

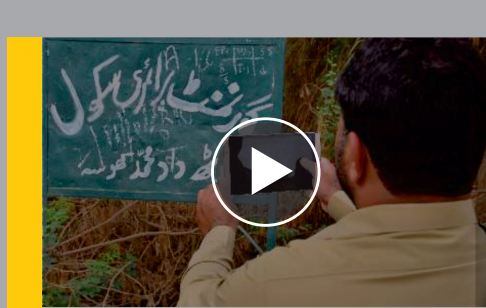
Note: The findings of RTSM visits represent the performance of schools as noticed at the time of visit and may not be representative of routine school functions.

- Unique identification number of cluster head schools in ascending order
- Shows the percentage of times out of total monitoring visits on which schools were found closed.
- Student/teaching staff and non teaching staff attendance value is a sum of the total number of students/staff monitored on all visits.
- Percentage of school facilities is a composite average of availability of safe drinking water, chairs and table for teachers, mats and desks for students and blackboard and chalks in classes.
- Percentage of teaching and learning environment in school is a composite average of students having textbook, availability of syllabus in class and number of students wearing uniform.
- Shows usability of available rooms to carry out teaching and learning processes and usability of available toilets to fulfill sanitation and safe hygiene needs of students. The monitoring tools employed here are based on observation of the monitor and interview with school/class teacher(s)
- Refers to the number of teachers in cluster and feeder schools who are participating in Continuous Professional Development (CPD)\* training.
- Refers to the participation of staff of feeder schools in procurement committee meetings convened by cluster head schools based on information provided by feeder schools.
- Refers to the percentage of schools in cluster visited by Education Field Officials (EFO)\* during the reporting period.



Download the Electronic copy of **STATIC BOOKLET** JUNE 2019

click the Download button



Watch a video documentary on the Balochistan Real Time School Monitoring System

click the play button

MASTUNG

## CLUSTER REPORT CARD

Cluster Schools and Monitoring Visits			Cluster Operations			Cluster Attendance			Cluster Environment				Cluster Participation				
01	02	03	04	05	06	07	08	09	10	11	12	13	14	15	16	17	18
Cluster BEWIS No	Cluster Name	Total Schools	Schools in Cluster Monitored (%)	Monitoring Visits (#)	Times Schools Closed on Visit (%)	Student (%)	Teaching Staff (%)	Non Teaching Staff (%)	Facilities (%)	Teaching and Learning (%)	Usable Rooms (%)	Usable Toilets (%)	Schools without Toilets (%)	Child Clubs Formed(%)	Teachers enrolled in CPD* (%)	Feeder Schools in Procurement Meetings (%)	Schools visited by EFOs* (%)
02850	GBHS NAWAB GHOUS BAKHSH REISANI	13	100%	73	12%	75%	82%	91%	45%	40%	83%	60%	38%	1%	0%	30%	16%
02867	GBHS PILOT SECONDARY	12	100%	86	3%	73%	84%	86%	62%	50%	84%	35%	17%	1%	1%	20%	14%
02868	GBHS MUHAMMAD SHAI	12	100%	90	7%	76%	87%	91%	62%	49%	86%	48%	8%	1%	2%	48%	13%
02869	GBHS WALI KHAN	13	100%	99	22%	74%	85%	85%	41%	34%	73%	35%	46%	0%	0%	16%	13%
02870	GBHSS PARINGABAD	12	100%	89	8%	71%	78%	81%	45%	47%	81%	36%	42%	2%	0%	25%	13%
02871	GGHS MUSTUNG ROAD WALI KHAN	10	90%	53	15%	53%	74%	100%	41%	46%	91%	19%	0%	2%	2%	25%	13%
02875	GGHS MUSTUNG	12	100%	63	32%	67%	72%	94%	32%	42%	85%	42%	0%	10%	8%	29%	13%
02876	GGHS PARING ABAD	7	100%	42	2%	61%	79%	98%	50%	79%	96%	47%	0%	2%	10%	31%	17%
02877	GGHS MUHAMMAD SHAHI	15	100%	100	7%	59%	65%	77%	54%	75%	92%	46%	0%	2%	14%	38%	15%
02878	GGHS PUBLIC SCHOOL MASTUNG	8	88%	39	13%	66%	81%	100%	40%	69%	76%	39%	29%	3%	8%	21%	18%
02880	GGHS KARAIZ NOTH	21	90%	123	21%	63%	78%	97%	46%	58%	84%	41%	16%	0%	5%	33%	14%
02881	GGHS KILLI SHEIKHAN MASTUNG	7	100%	48	15%	68%	71%	100%	52%	70%	91%	43%	14%	2%	6%	40%	10%
02885	GGHS SHAMS ABAD	20	100%	115	17%	67%	68%	69%	42%	57%	87%	40%	15%	0%	3%	31%	17%
02890	GGHS DRINGERH	8	100%	48	25%	62%	58%	87%	29%	40%	98%	25%	25%	6%	8%	25%	15%
02891	GGHS BABRI	6	100%	25	28%	63%	72%	86%	35%	47%	95%	76%	0%	4%	8%	28%	16%

MASTUNG

06849	GBHS PIR ANDER	11	100%	55	35%	83%	83%	100%	9%	19%	75%	14%	27%	0%	0%	4%	4%
06853	GBMODHS AWARAN	12	100%	63	6%	75%	90%	70%	22%	25%	77%	38%	25%	0%	0%	5%	17%
06862	GBHS TEER TAJI	7	71%	24	8%	75%	84%	71%	21%	36%	83%	88%	80%	0%	0%	17%	8%
06863	GBHS SARI MALAR	10	100%	34	35%	76%	68%	100%	12%	23%	82%	49%	40%	0%	0%	0%	3%
06864	GBHS SHAM MARA	9	78%	21	43%	87%	65%	73%	6%	17%	79%	0%	43%	0%	0%	5%	0%
06865	GBHS CHERI MALAR	11	100%	34	21%	75%	79%	62%	22%	29%	88%	72%	27%	0%	0%	15%	6%
06879	GBHS GISHKOR	9	100%	21	19%	78%	77%	100%	15%	28%	95%	47%	33%	0%	0%	5%	14%
06894	GBHS LANJAR JHAO	27	89%	164	29%	87%	60%	88%	23%	22%	78%	46%	42%	0%	0%	2%	10%
06895	GBHS SHANDI JHOO	10	100%	85	65%	89%	31%	64%	12%	13%	81%	32%	40%	0%	0%	5%	4%
06918	GBHS PARWAR	10	100%	19	26%	88%	82%	100%	32%	39%	48%	47%	40%	5%	0%	0%	26%
06930	GBHSS MUSHKAY GAJAR	12	92%	30	0%	84%	87%	90%	25%	36%	77%	93%	73%	3%	0%	10%	20%
06931	GGHS GAJAR MASHKAY	24	100%	76	20%	88%	60%	86%	34%	40%	75%	70%	29%	1%	0%	4%	11%
06938	GBHS JIBRI	11	64%	19	32%	66%	48%	88%	31%	18%	15%	14%	29%	0%	0%	0%	5%
06944	GBHS NALLY MASHKAY	12	92%	44	2%	89%	86%	90%	22%	32%	80%	60%	55%	5%	2%	7%	16%
06949	GBHS KOOTO JHAOO	9	100%	83	80%	72%	40%	50%	7%	6%	57%	0%	67%	0%	0%	4%	4%
06953	GBHS NOKJO	9	89%	20	40%	87%	60%	85%	20%	28%	71%	42%	25%	0%	0%	0%	15%
06958	GBHS GORJAK	8	75%	19	58%	87%	69%	86%	15%	18%	66%	38%	17%	0%	0%	5%	11%
06963	GBHS KAHNZEELAG	7	86%	19	11%	85%	90%	100%	13%	37%	59%	26%	67%	0%	0%	16%	16%
06965	GBHS KOHRO	11	91%	55	64%	91%	46%	75%	2%	8%	81%	66%	30%	0%	0%	0%	2%
06972	GBHS PILLAR JHAOO	11	91%	45	80%	82%	17%	26%	1%	4%	37%	0%	10%	0%	0%	0%	4%
10287	GGHS BADI AWARAN	7	100%	34	9%	75%	80%	100%	29%	11%	73%	33%	0%	0%	0%	6%	21%
10549	GGHS SHADANZAI NOKJO	12	92%	39	46%	77%	29%	35%	15%	18%	59%	12%	9%	0%	0%	5%	10%
10908	GGHS AWARAN TOWN	6	100%	29	28%	70%	80%	85%	23%	16%	83%	49%	17%	0%	0%	7%	14%
11804	GGHS ALI MUHAMMAD GOTH JHAO	10	90%	51	35%	83%	27%	49%	11%	12%	85%	42%	56%	0%	0%	2%	10%
12002	GGHS DAD DOST BAZAR	7	100%	21	19%	76%	67%	92%	12%	29%	83%	16%	14%	0%	0%	0%	19%

AWARAN

06225	GBHS GADDANI	21	100%	55	24%	81%	65%	62%	12%	21%	66%	22%	38%	9%	0%	9%	31%
06226	GGHS GADDANI	4	100%	5	60%	84%	50%	100%	11%	22%	90%	67%	0%	20%	0%	0%	40%
06238	GBHS BUND MURAD	7	100%	15	20%	80%	83%	89%	27%	24%	87%	51%	29%	7%	0%	0%	33%
06244	GBHS LUNG LOHAR.	7	100%	15	60%	83%	55%	100%	11%	15%	76%	75%	29%	7%	0%	0%	27%
06269	GBHS SAKRAN	12	92%	25	8%	84%	84%	67%	36%	42%	80%	54%	27%	12%	0%	4%	40%
06270	GGHS SAKRAN	6	100%	15	0%	74%	81%	90%	62%	66%	96%	64%	0%	100%	0%	40%	40%
06272	GGHS HUB	9	100%	24	4%	76%	83%	100%	47%	54%	89%	65%	0%	58%	4%	50%	38%
06273	GBHS HUB	27	89%	110	9%	76%	77%	92%	34%	32%	84%	60%	8%	32%	0%	12%	21%
06278	GBHS GOTH HAJI CHAKAR WINDER	13	100%	30	13%	77%	87%	92%	48%	47%	87%	77%	15%	23%	0%	83%	33%
06282	GBHS DAAM	2	100%	4	0%	85%	96%	100%	57%	46%	100%	100%	50%	50%	0%	75%	25%
06283	GBHS SONMIANI	2	100%	6	0%	74%	91%	100%	65%	48%	89%	33%	0%	17%	0%	83%	33%
06286	GBHS WINDAR	26	96%	69	16%	84%	90%	64%	39%	43%	84%	68%	36%	14%	1%	70%	35%
06297	GGHS WINDAR	27	96%	70	17%	77%	79%	97%	55%	65%	96%	76%	15%	47%	0%	80%	20%
06302	GBHS WASARA DODA BALA WINDER	6	100%	17	0%	86%	89%	100%	47%	47%	95%	95%	33%	24%	0%	88%	35%
06342	GBHS BEHLORE	6	100%	11	27%	90%	83%	100%	66%	24%	89%	48%	0%	0%	0%	36%	18%
06344	GBHSS DUREJI	44	91%	73	41%	79%	74%	93%	26%	18%	80%	47%	15%	5%	0%	22%	23%
06345	GBHS LOHI	10	100%	19	26%	85%	83%	86%	30%	24%	82%	83%	60%	0%	0%	26%	16%
06361	GBHS MURIDANI	4	75%	12	0%	84%	95%	100%	67%	60%	96%	76%	0%	33%	0%	67%	25%
06370	GBHS SANYIAN	7	71%	14	0%	78%	86%	100%	57%	34%	85%	60%	0%	7%	0%	57%	36%
06371	GBHS GOTH YUNAS BELA	9	100%	27	7%	85%	76%	100%	47%	40%	88%	78%	22%	33%	0%	78%	30%
06373	GGHS BARA BAGH	17	100%	49	14%	64%	79%	92%	53%	41%	94%	67%	18%	29%	2%	55%	20%
06382	GBHS ARIF WALA BELA	12	100%	26	4%	76%	93%	87%	47%	37%	95%	86%	67%	0%	0%	65%	42%
06404	GBHS BELA	22	95%	93	4%	76%	88%	87%	60%	35%	63%	44%	29%	16%	0%	72%	22%
06412	GBHS JAM YOUSAF ABAD	11	82%	24	4%	74%	85%	100%	52%	42%	82%	32%	33%	8%	0%	88%	38%
06421	GGHS BELA	36	97%	99	14%	75%	74%	100%	58%	36%	82%	57%	9%	15%	0%	58%	23%
06425	GBHS NOTANI	15	100%	56	2%	78%	88%	100%	54%	44%	87%	70%	33%	20%	0%	63%	25%
06427	GGHS NOTANI	19	100%	48	10%	76%	86%	100%	56%	45%	86%	51%	16%	23%	2%	75%	17%
06444	GBHS ISMAILANI	18	100%	42	10%	85%	93%	100%	49%	41%	64%	39%	44%	7%	2%	79%	33%
06464	GBHS MOSANI	23	96%	50	14%	71%	83%	89%	45%	27%	74%	61%	41%	14%	0%	60%	34%
06475	GBHS JUMAN BHIT	11	100%	28	11%	72%	85%	100%	47%	40%	91%	36%	55%	4%	0%	68%	29%
06484	GBHS WAYARO	21	86%	46	20%	84%	77%	100%	34%	40%	94%	56%	17%	17%	0%	70%	30%
06518	GBHS GOTH RAMZAN	15	87%	27	19%	80%	59%	25%	37%	47%	90%	71%	62%	4%	0%	59%	41%
06530	GBHS LAKHRA	41	90%	75	24%	82%	78%	82%	30%	33%	83%	67%	49%	8%	0%	63%	28%
06552	GBMODHS UTHAL	42	100%	158	16%	83%	85%	98%	40%	46%	92%	73%	29%	26%	3%	60%	21%
06554	GGHSS UTHAL	38	97%	249	12%	71%	78%	94%	55%	67%	95%	68%	19%	59%	35%	80%	13%
06569	GBHS UMAR GOTH	14	100%	29	31%	78%	65%	94%	31%	29%	97%	100%	50%	7%	0%	62%	28%
06596	GBHS BOHAR KHENWARI	7	86%	15	33%	91%	72%	100%	20%	32%	100%	89%	17%	0%	0%	33%	20%
13231	GGHS AKRAM COLONY	9	100%	22	14%	67%	70%	75%	48%	39%	91%	93%	0%	59%	0%	45%	32%

IASBELA