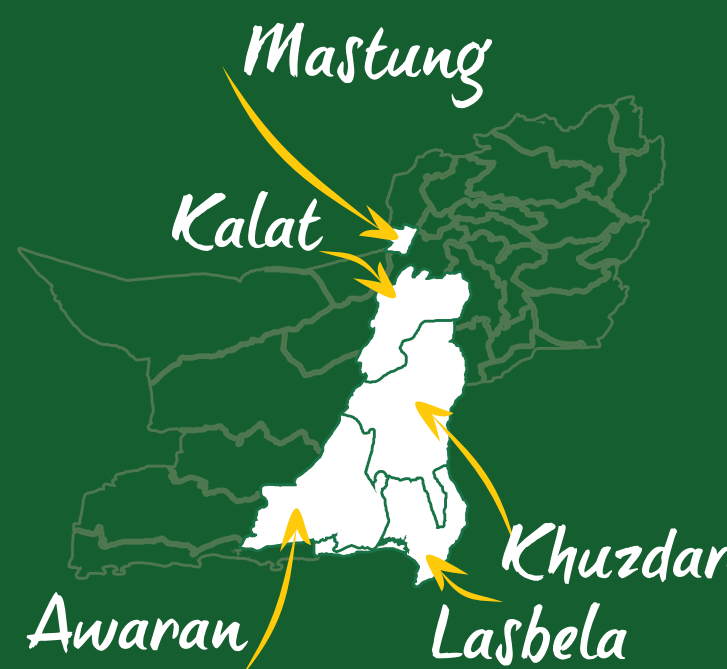


KALAT DIVISION

Part I

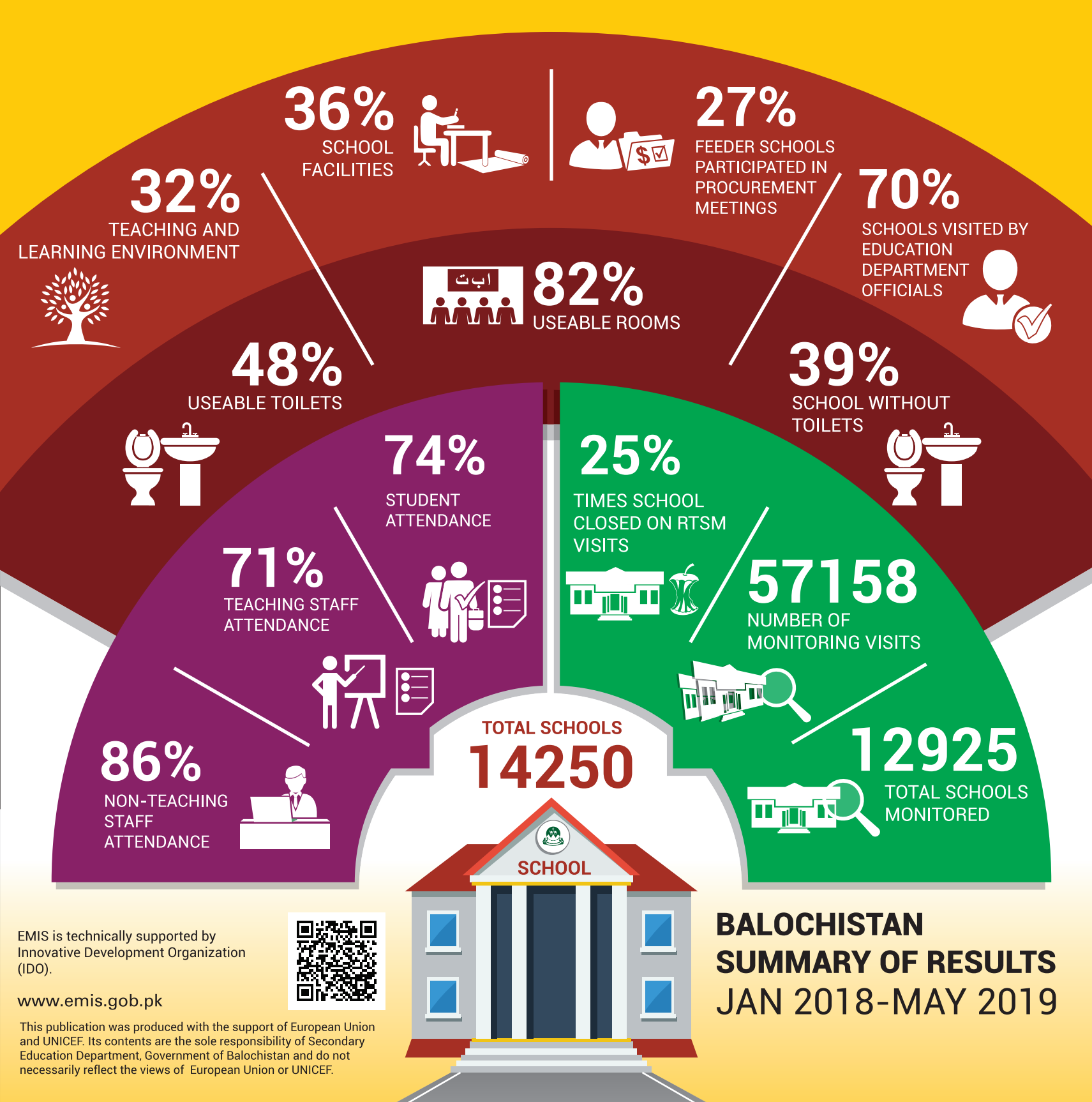


PERFORMANCE MANAGEMENT CELL (PMC)
Policy, Planning and Implementation Unit (PIU)
Secondary Education Department, Balochistan

BALOCHISTAN REAL TIME SCHOOL MONITORING SYSTEM

DIVISIONAL REPORT CARD

Based on findings of 57,158 monitoring visits to 12,925 schools from Jan 2018 to May 2019 in Balochistan

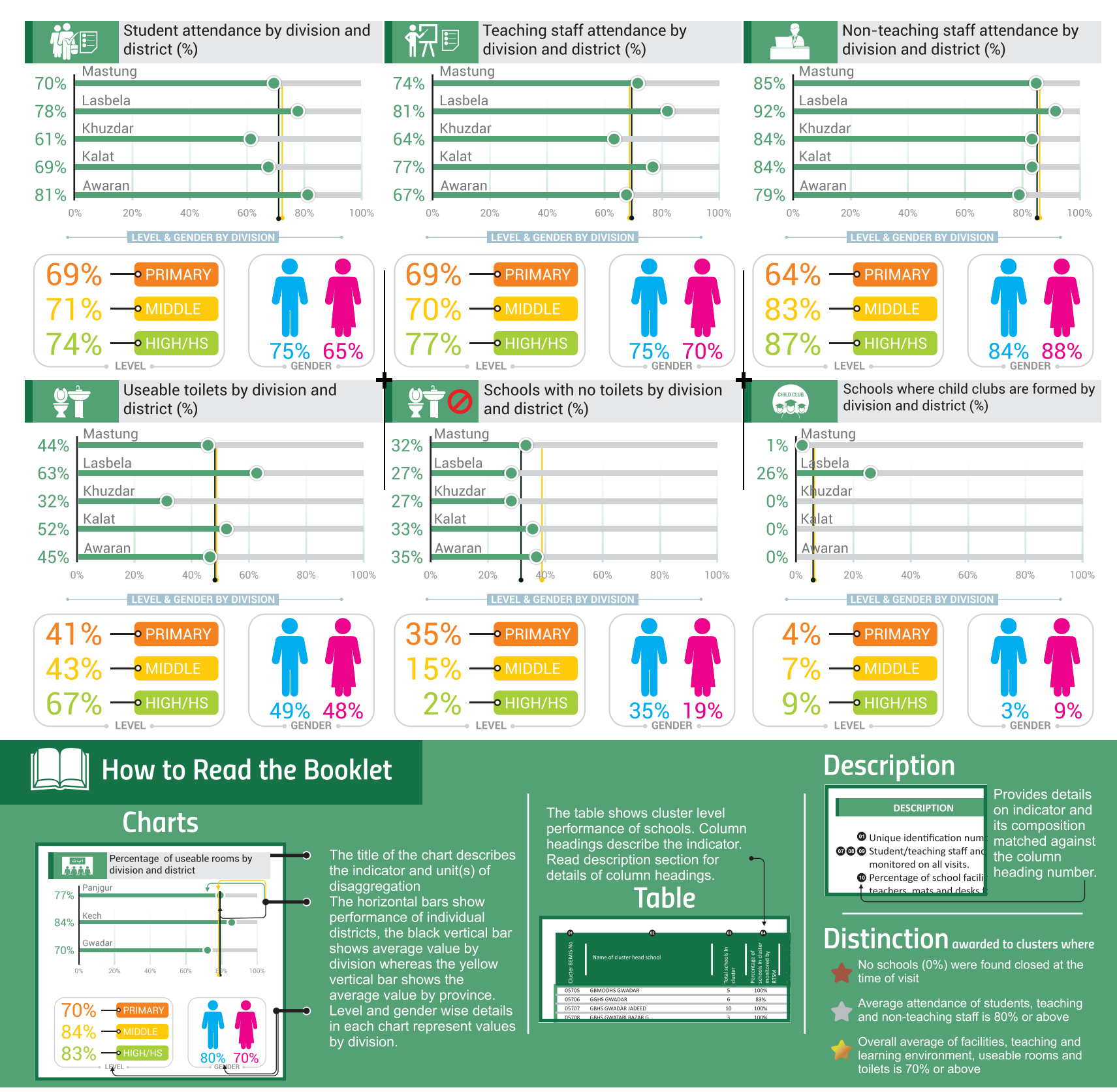
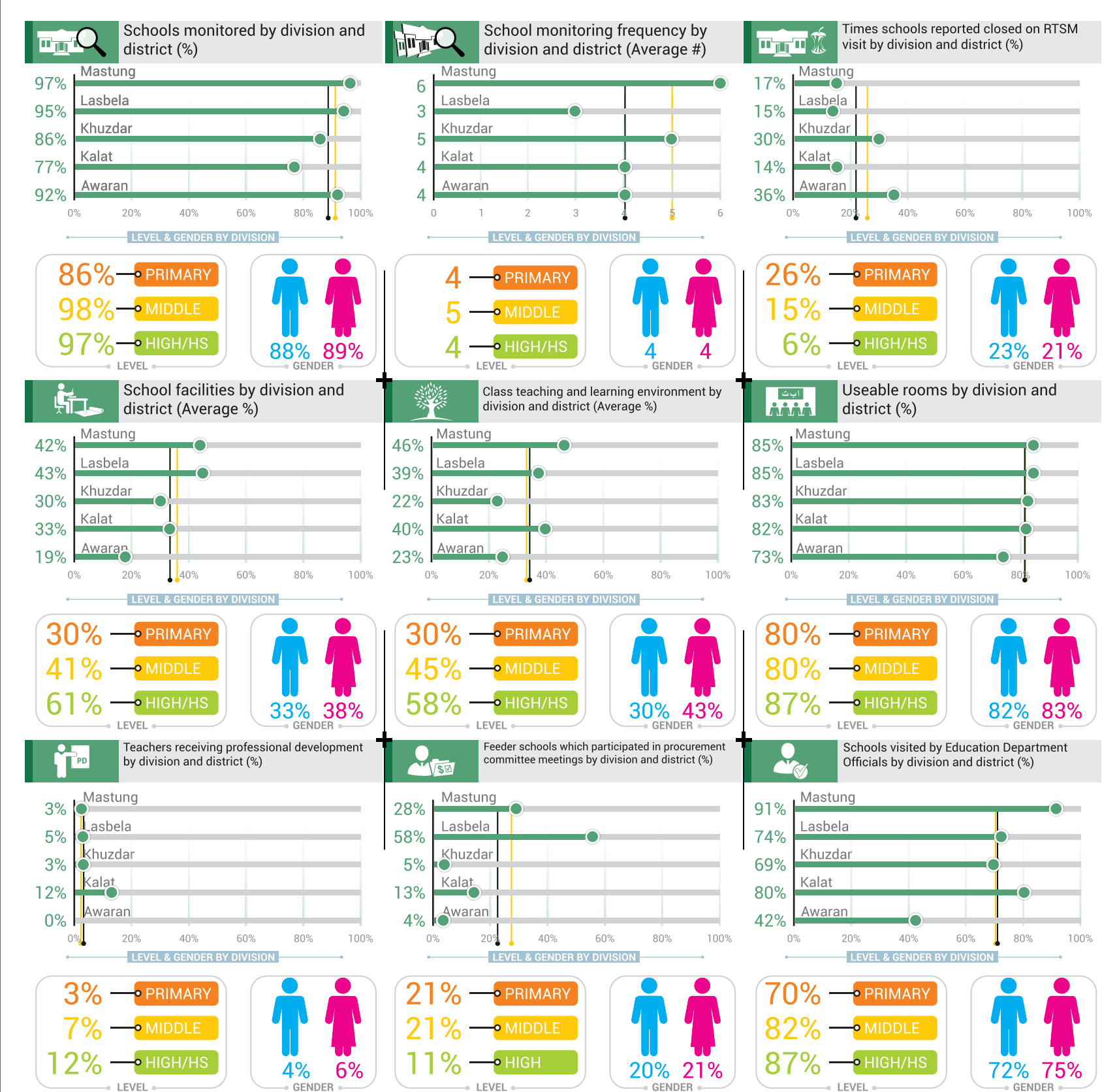


BALOCHISTAN SUMMARY OF RESULTS JAN 2018-MAY 2019

EMIS is technically supported by Innovative Development Organization (IDO).

www.emis.gob.pk

This publication was produced with the support of European Union and UNICEF. Its contents are the sole responsibility of Secondary Education Department, Government of Balochistan and do not necessarily reflect the views of European Union or UNICEF.



Cluster Schools and Monitoring Visits		Cluster Operations		Cluster Attendance		Cluster Environment			Cluster Participation								
Cluster BEIMS No	Cluster Name	Total Schools	Schools in Cluster Monitored (%)	Monitoring Visits (#)	Times Schools Closed on visit (%)	Student (%)	Teaching Staff (%)	Non Teaching Staff (%)	Facilities (%)	Teaching and Learning (%)	Useable Rooms (%)	Useable Toilets (%)	Schools without Toilets (%)	Child Clubs Formed (%)	Teachers enrolled in CPD* (%)	Feeder Schools in Procurement Meetings (%)	Schools visited by EFOs* (%)
03574	GBHS NOOR GAMA ZEHR	24	88%	109	26%	74%	69%	86%	28%	26%	78%	44%	19%	0%	0%	4%	11%
03575	GBHS BALBAL GHAT	16	100%	72	26%	64%	69%	93%	36%	34%	85%	29%	38%	0%	3%	1%	19%
03610	GGHS AABAD KARKH	28	96%	114	37%	53%	50%	85%	21%	13%	81%	15%	37%	0%	5%	1%	11%
03641	GBHS BAJOI BAGHBANA	9	100%	34	32%	66%	72%	88%	33%	23%	90%	40%	0%	0%	3%	12%	18%
03651	GBMODHS KHUZDAR	34	88%	148	20%	63%	70%	87%	36%	22%	89%	48%	13%	0%	2%	7%	16%
03652	GBHS KHAND	9	100%	43	14%	67%	77%	94%	42%	26%	78%	74%	33%	5%	5%	23%	16%
03654	GGHS KHAIR ABAD KHUZDAR	11	100%	92	12%	51%	72%	93%	50%	39%	94%	39%	0%	0%	1%	0%	11%
03660	GBHS ZEEDI	34	65%	80	25%	46%	56%	65%	27%	15%	78%	8%	23%	0%	3%	18%	19%
03671	GBHS KHATAN	18	94%	75	28%	63%	76%	97%	35%	24%	90%	33%	35%	0%	0%	15%	17%
03672	GGHS KHATAN	19	100%	167	17%	50%	72%	89%	45%	24%	90%	42%	0%	1%	8%	7%	9%
03685	GBHS TOTAK	30	67%	83	25%	72%	65%	79%	39%	41%	72%	19%	15%	0%	0%	2%	19%
03694	GBHS GUNGO FERAZABAD	11	100%	62	37%	47%	50%	57%	32%	19%	85%	55%	18%	0%	2%	10%	16%
03714	GBHS HEENAR NOGHAY	7	86%	33	18%	69%	70%	93%	44%	36%	94%	43%	33%	0%	0%	6%	15%
03715	GBHS BAGHABANA	19	100%	84	38%	68%	49%	81%	31%	23%	87%	18%	16%	0%	0%	6%	15%
03742	GBHS ORANCH	18	94%	95	19%	67%	79%	87%	33%	24%	77%	8%	53%	1%	1%	16%	17%
03763	GBHS SAROONA	18	100%	64	50%	71%	60%	70%	22%	15%	82%	25%	39%	0%	0%	6%	11%
03789	GBHS WAHEER CHASHMA MURAD KHAN	23	100%	88	40%	50%	61%	74%	26%	12%	94%	50%	39%	0%	2%	7%	19%
03803	GBHS KAKAHEER	40	98%	118	32%	61%	60%	67%	29%	21%	87%	29%	62%	0%	7%	11%	24%
03814	GBHS WADH	58	79%	160	42%	70%	66%	100%	23%	17%	88%	50%	46%	1%	1%	7%	14%
09099	GGHS BULBUL	13	100%	75	25%	63%	59%	100%	36%	29%	82%	28%	23%	0%	1%	0%	12%
09257	GGHS NOOR GAMA ZEHR	31	90%	136	40%	65%	54%	54%	29%	23%	72%	18%	11%	0%	4%	1%	10%
09975	GGHS SAREI GRESHA	14	14%	20	25%												
10401	GGHS LAD ZEEDI	7	100%	38	42%	36%	31%	69%	22%	15%	89%	27%	0%	3%	0%	0%	8%
12547	GGHS KILLI SHER JAN	14	86%	82	24%	51%	46%	89%	31%	17%	76%	36%	8%	0%	2%	1%	10%
12591	GGHS MUHAMMAD KHANI	35	100%	233	36%	49%	47%	72%	25%	17%	72%	24%	0%	0%	2%	0%	9%
13260	GGHS KILLI ALAM KHAN	9	100%	56	29%	56%	46%	93%	30%	19%	78%	22%	33%	0%	4%	4%	13%

Note: The findings of RTSM visits represent the performance of schools as noticed at the time of visit and may not be representative of routine school functions.

- Unique identification number of cluster head schools in ascending order
- Shows the percentage of times out of total monitoring visits on which schools were found closed.
- Student/teaching staff and non teaching staff attendance value is a sum of the total number of students/staff monitored on all visits.
- Percentage of school facilities is a composite average of availability of safe drinking water, chairs and table for teachers, mats and desks for students and blackboard and chalks in classes.
- Percentage of teaching and learning environment in school is a composite average of students having textbook, availability of syllabus in class and number of students wearing uniform.
- Shows usability of available rooms to carry out teaching and learning processes and usability of available toilets to fulfill sanitation and safe hygiene needs of students. The monitoring tools employed here are based on observation of the monitor and interview with school/class teachers(s)
- Refers to the number of teachers in cluster and feeder schools who are participating in Continuous Professional Development (CPD)* training.
- Refers to the participation of staff of feeder schools in procurement committee meetings convened by cluster head schools based on information provided by feeder schools.
- Refers to the percentage of schools in cluster visited by Education Field Officials (EFO)* during the reporting period.

KHUZDAR



Download the Electronic copy of **STATIC BOOKLET** JUNE 2019
click the Download button



Watch a video documentary on the Balochistan Real Time School Monitoring System
click the play button

CLUSTER REPORT CARD

Cluster Schools and Monitoring Visits			Cluster Operations			Cluster Attendance			Cluster Environment					Cluster Participation				
01	02	03	04	05	06	07	08	09	10	11	12	13	14	15	16	17	18	
Cluster BE/MIS No	Cluster Name	Total Schools	Schools in Cluster Monitored (%)	Monitoring Visits (#)	Times Schools Closed on Visit (%)	Student (%)	Teaching Staff (%)	Non Teaching Staff (%)	Facilities (%)	Teaching and Learning (%)	Usable Rooms (%)	Usable Toilets (%)	Schools without Toilets (%)	Child Clubs Formed(%)	Teachers enrolled in CPD* (%)	Feeder Schools in Procurement Meetings (%)	Schools visited by EFOs* (%)	
03485	GBHS NALL	34	91%	136	26%	70%	65%	85%	39%	29%	81%	39%	19%	0%	0%	7%	20%	
03486	GGMODHS KHUZDAR	24	100%	211	27%	54%	66%	93%	29%	24%	86%	32%	21%	0%	5%	1%	9%	
03487	GGHS NALL	26	85%	118	36%	51%	50%	79%	31%	16%	73%	21%	9%	0%	5%	3%	15%	
03495	GBHS GRISHA	33	15%	34	3%	Results not provided for clusters where 25% or less schools were monitored.												
03513	GBHS KHARZAN	19	100%	74	53%	66%	58%	96%	20%	21%	90%	38%	42%	0%	3%	3%	15%	
03518	GBHS HITACHI	7	100%	32	38%	54%	56%	88%	25%	19%	49%	55%	43%	0%	3%	3%	19%	
03523	GBHS KARAKH	17	88%	97	28%	69%	72%	88%	34%	20%	77%	28%	27%	0%	1%	10%	12%	
03524	GBHS NOKJOO KARAKH	11	64%	46	24%	63%	77%	87%	31%	18%	80%	0%	71%	0%	2%	9%	13%	
03525	GBHS SUN CHAKOO KARKH	5	80%	19	53%	64%	60%	100%	23%	8%	43%	47%	50%	0%	0%	0%	16%	
03533	GBHS GROOK	7	71%	14	7%	64%	81%	94%	33%	28%	90%	81%	60%	0%	29%	7%	29%	
03534	GBHS MAROKI	5	100%	16	31%	61%	45%	53%	25%	22%	78%	0%	20%	0%	13%	13%	19%	
03535	GBHS HAZAR GUNJI	6	100%	18	11%	62%	55%	100%	47%	44%	95%	23%	17%	0%	11%	0%	11%	
03551	GBHS MISHK SAR AAP	9	100%	22	59%	63%	49%	60%	14%	10%	80%	27%	22%	0%	0%	5%	18%	
03552	GBHS CHASMA ZEHRİ	11	100%	53	60%	48%	64%	94%	22%	17%	79%	36%	36%	0%	2%	0%	17%	
03559	GBHS SUMWANI	3	67%	12	33%	71%	82%	N/A	26%	20%	94%	15%	0%	0%	0%	0%	8%	
03563	GBHS GOONI GRISHA	★	1	100%	1	0%	76%	63%	N/A	43%	79%	100%	0%	N/A	0%	N/A	100%	
03097	GBHS CHOBDAR	★	11	100%	62	10%	76%	88%	86%	40%	44%	90%	74%	45%	0%	15%	11%	15%
03100	GBHS KHEESOOON DOON	★	6	83%	29	14%	77%	72%	93%	39%	35%	75%	21%	20%	0%	24%	7%	17%
03104	GBHS DUMB	★	7	86%	29	24%	77%	79%	95%	36%	38%	95%	48%	50%	0%	10%	17%	10%
03105	GBHS HAJIKA		11	100%	72	7%	66%	78%	77%	47%	46%	83%	50%	55%	0%	11%	28%	14%
03111	GBHS SURAB	★ ★	8	100%	68	0%	67%	84%	94%	56%	58%	90%	41%	0%	1%	34%	34%	12%
03114	GGHS SURAB		36	86%	41	2%	61%	78%	92%	33%	65%	73%	55%	45%	0%	0%	2%	76%
03123	GBHS MIRWANI		10	100%	68	18%	61%	76%	93%	38%	40%	81%	52%	40%	0%	16%	21%	15%
03148	GGHS MUGHAL ZAI		8	13%	8	0%	Results not provided for clusters where 25% or less schools were monitored.											
03149	GBHS POLICE LINE KALAT		9	89%	61	10%	79%	84%	76%	43%	36%	92%	58%	13%	0%	16%	10%	11%
03150	GBHS NEW GARANI KILLI ABABAKI		8	88%	36	22%	76%	75%	82%	30%	25%	88%	64%	0%	0%	25%	14%	11%
03151	GBHS LAKHORIAN		16	81%	65	8%	70%	59%	35%	31%	40%	82%	33%	46%	0%	5%	34%	18%
03156	GBHS NICHARA		12	100%	38	37%	62%	74%	100%	17%	13%	98%	45%	0%	0%	3%	0%	13%
03159	GBHS PANDRAN		6	100%	24	21%	55%	68%	82%	31%	26%	81%	44%	33%	0%	0%	0%	17%
03173	GBHS JEEWA		22	82%	69	16%	57%	64%	62%	30%	25%	81%	22%	39%	0%	1%	16%	17%
03183	GBMODHS KALAT	★	10	100%	97	5%	82%	86%	78%	60%	53%	97%	53%	0%	0%	15%	24%	10%
03191	GBHS MUGHAL ZAI	★	12	100%	85	18%	86%	87%	83%	39%	32%	80%	70%	25%	0%	12%	11%	11%
03193	GBHS MUHAMMAD TAWA		11	100%	35	29%	68%	84%	50%	19%	17%	69%	23%	0%	0%	9%	9%	11%
03195	GBHS KOHING KALAT	★	9	100%	87	20%	78%	81%	88%	45%	37%	88%	48%	22%	0%	9%	10%	10%
03217	GBHS ZARD ABDULLAH	★	7	100%	31	10%	84%	76%	N/A	33%	19%	94%	23%	14%	0%	19%	13%	13%
03220	GBHS ZARD GHULAM JAN		8	88%	20	35%	88%	56%	76%	12%	13%	75%	80%	29%	0%	20%	0%	10%
03225	GBHS GOHAR KHAN		8	50%	17	12%	62%	73%	83%	25%	21%	89%	53%	0%	0%	35%	12%	12%
03239	GBHS TOBA GIDDER		28	89%	71	11%	59%	70%	69%	29%	37%	84%	20%	56%	0%	1%	11%	30%
03240	GBHS UMARABAD GIDDER		25	92%	134	31%	65%	69%	96%	31%	32%	84%	68%	35%	1%	6%	8%	13%
03241	GGHS HATHYARI GIDDAR	★ ★	30	83%	31	0%	72%	83%	100%	40%	64%	65%	65%	76%	0%	0%	0%	81%
03246	GGHS BARNICHNA MUNGCHAR	★	7	29%	9	0%	84%	68%	50%	57%	46%	31%	100%	50%	0%	0%	11%	22%
03247	GGHSS KALAT	★ ★	8	63%	13	0%	54%	87%	100%	42%	78%	100%	37%	0%	0%	0%	23%	38%
03248	GGHS JOHAN		5	0%	0	N/A	Results not provided for clusters where 25% or less schools were monitored.											
03250	GBHS RODENJOO		8	75%	31	29%	74%	76%	89%	27%	22%	91%	60%	50%	0%	23%	3%	13%
03258	GGHS MANDAY HAJI		11	73%	20	15%	60%	94%	80%	37%	43%	95%	47%	13%	0%	0%	40%	25%
03259	GBHS KILLI KHUDA BAKHSH ZAI		8	75%	21	14%	64%	34%	75%	24%	14%	81%	43%	67%	0%	14%	14%	19%
03261	GBHS BARNICHNA MUNGCHAR		8	88%	26	19%	77%	59%	67%	21%	22%	91%	67%	0%	0%	8%	31%	12%
03266	GBHS PURANA THANA	★	11	91%	41	15%	81%	82%	100%	32%	30%	90%	39%	40%	0%	10%	24%	17%
03267	GBHS MANDAY HAJI		10	100%	44	30%	74%	58%	67%	16%	17%	93%	59%	20%	0%	18%	14%	11%
03270	GBHS MAHMOOD GOHRAM		11	73%	63	6%	61%	77%	81%	40%	33%	97%	49%	25%	0%	33%	21%	11%
03278	GBHS KHURASANI MANGOCHAR		5	60%	12	42%	85%	53%	N/A	16%	18%	58%	60%	33%	0%	17%	0%	8%
03280	GBHS KOOR MUNGCHAR(REHMATZAI)		9	67%	34	3%	74%	61%	100%	40%	38%	81%	26%	17%	0%	32%	24%	6%
03285	GBHS ISKALKOO		7	100%	53	23%	67%	73%	100%	30%	24%	89%	73%	14%	0%	2%	6%	9%
03291	GBHS MIAN PASAND KHAN		14	86%	43	7%	78%	80%	45%	37%	43%	84%	46%	58%	0%	14%	7%	26%
03293	GBHS AHMED ABAD		8	88%	34	26%	79%	64%	93%	21%	23%	67%	54%	14%	0%	9%	0%	12%
03294	GBHS CHATI KALAT		12	50%	31	23%	63%	57%	87%	29%	23%	73%	68%	33%	0%	13%	6%	13%
03297	GGHS PAS SHEHER KALAT	★	10	70%	11	0%	57%	76%	100%	25%	60%	89%	60%	43%	0%	0%	9%	64%
03308	GBHS GAZAG		9	0%	0	N/A	Results not provided for clusters where 25% or less schools were monitored.											
03309	GBHS JOHAN		19	11%	20	0%	Results not provided for clusters where 25% or less schools were monitored.											
03327	GGHS KOHING KALAT	★ ★ ★	7	100%	13	0%	74%	81%	100%	37%	68%	100%	81%	29%	0%	0%	0%	54%
03329	GGHS CHASHMA KALAT	★ ★	8	75%	11	0%	66%	86%	100%	28%	67%	97%	71%	33%	0%	0%	0%	55%
08453	GBHS KORKI MUNGCHAR		4	100%	18	6%	75%	47%	N/A	32%	32%	74%	37%	25%	0%	22%	11%	22%
08473	GBHS BAINCHA		4	75%	21	14%	70%	76%	76%	47%	44%	77%	83%	0%	0%	29%	14%	14%
08478	GBHS BUDA ZAI		6	33%	6	17%	69%	50%	N/A	0%	22%	100%	0%	100%	0%	0%	0%	17%
08893	GGHS MALGHAZAR	★	9	67%	13	0%	62%	73%	100%	30%	62%	78%	29%	33%	0%	0%	8%	46%
09748	GGHS PURANA THANA MANGOCHAR	★	10	80%	18	11%	64%	84%	100%	38%	45%	65%	69%	50%	0%	0%	0%	39%
10940	GGHS GIRANI	★ ★	5	80%	8	0%	68%	86%	100%	29%	54%	70%	44%	0%	0%	0%	0%	50%
11328	GGHS KHAIL		13	77%	16	6%	62%	80%	75%	22%	56%	80%	35%	30%	0%	0%	0%	63%
11922	GGHS KILLI DURAK ZAI		11	55%	20	15%	69%	76%	N/A	36%	42%	64%	53%	17%	0%	0%	10%	25%
11981	GGHS MAT GAJI KHAN ZAI	★	12	75%	12	0%	66%	69%	100%	43%	67%	76%	33%	56%	0%	0%	0%	67%
12558	GGHS RAISANI NIGHAR	★	1	100%	2	0%	54%	60%	100%	14%	90%	100%	29%	N/A	0%	0%	N/A	100%
14094	GGHS ZARD ABDULLAH KILLI AMANULLAH		8	50%	11	9%	48%	42%	67%	45%	41%	57%	44%	0%	0%	0%	0%	36%
16590	GGHS KILLI SHAHEED HANIF YOUSAFZAI	★	4	50%	4	25%	94%	100%	100%	0%	26%	100%	0%	0%	0%	0%	0%	25%

KHUZDAR

KALAT